

PENNSYLVANIA FAST FACTS AUGUST 2010 EDITION

Each of the following sections is a quick snapshot of Pennsylvania's many different labor market and economic datasets

Section	Page
Labor Force	2
Unemployment Demographics	3
Long-term Unemployed	4
Unemployment Compensation	5
Claims	6
Jobs	7
Industry	8
Industry Highlights	9
PA Employer Activities	10
Economic Indicators	11-12

Section	Page
Mass Layoff Statistics	13
New Hires	14
Other States' Rates	15
Business Employer Dynamics	16
Help Wanted Online Ads	17-21
Global Insight	22
News of the Month	23
Definitions	24-27
County Rate Map	28

For additional information, please contact:
Center for Workforce Information & Analysis (CWIA)
 Call: 1-877-493-3282; Fax: 1-717-772-2168
 E-mail: workforceinfo@state.pa.us

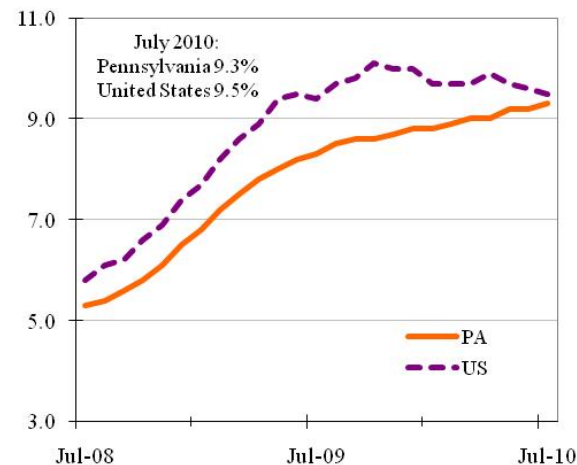


Release Date: 8-27-2010

CWIA-18

LABOR FORCE STATISTICS

Unemployment Rate Chart



Unemployment Rate (All data are seasonally adjusted)

- Pennsylvania is ranked 20th (highest rate) in the U.S.
- O-T-M change is +0.1 percentage points
- O-T-Y change is +1.0 percentage points
- Change since December 2007 is +4.8 percentage points
- PA's rate is forecast to be at 9.0% in 3rd Q 2010 (Global Insight)
- PA's rate has been at or below U.S. for 88 of the past 91 months
- July's unemployment rate for OH 10.3%, DC 9.8%, NJ 9.7%, WV 8.6%, DE 8.4%, NY 8.2%, MD 7.1%

O-T-M: Over the Month
 O-T-Y: Over the Year

Unemployment

- Pennsylvania unemployment for July is 592,000
- O-T-M change is +1,000, O-T-Y change is +58,000
- Change since December 2007 is +303,000

Employment

- Pennsylvania's employment for July is 5,802,000
- O-T-M change is -45,000, O-T-Y change is -65,000
- Change since December 2007 is -286,000 (-4.7%)

Labor Force

- Pennsylvania's labor force for July is 6,395,000
- O-T-M change is -43,000, O-T-Y change is -5,000
- Change since December 2007 is -19,000

UNEMPLOYMENT DEMOGRAPHICS

PA Unemployment Rate by Demographic Group

Group	2010 Q2	2010 Q1	2009 Q2	2008 Q2	2003 Q1
Total	9.2	9.2	7.8	4.7	6.8
White	8.6	8.1	7.2	4.4	6.2
Black	14.8	18.5	12.8	8.2	13.3
Male	10.3	11.1	8.3	4.6	7.8
Female	8.0	7.1	7.1	4.9	5.6
16-19	21.9	20.8	18.1	22.2	19.1
20-24	20.1	16.1	13.4	8.2	10.9
25-54	7.6	8.3	6.7	3.5	5.8
55+	6.5	7.0	5.6	5.6	5

- The unemployment rates for all demographic groups are higher than a year ago (2nd Q), 2010 versus 2009
- Blacks, males, and younger workers have the highest rates

PA Unemployment Rate by Educational Group

Group	2010 Q2	2010 Q1	2009 Q2	2008 Q2	2003 Q1
Less than a HS diploma	13.2	15.0	12.2	9.6	10.6
HS graduates, no college	10.7	10.2	8.5	3.8	7.9
Some college, no degree	9.6	11.7	9.2	5.4	7.3
Associate degree	7.1	5.5	4.4	3.1	5.9
Bachelor's degree or higher	3.9	4.1	3.3	2.1	2.8

- With each increasing level of education the unemployment rate decreases (2nd quarter 2010)

Select PA Labor Force Characteristics

Quarter	Discouraged Workers	Part-time for Econ. Reasons	Duration of Unemployment (weeks)	Labor Force Participation Rate	Employment to Population Ratio	Long-term Unemployed (>27 weeks)
2010 Q2	40,400	284,000	30.7	63.5%	57.6%	234,000
2010 Q1	23,700	330,000	27.4	63.6%	57.8%	200,000
2009 Q2	27,400	324,000	20.9	65.0%	59.9%	110,000
2008 Q2	14,600	163,000	13.7	65.3%	62.2%	-
2003 Q1	14,700	203,000	17.7	63.3%	59.0%	-

- PA's discouraged workers and the duration of unemployment are significantly higher than a year ago
- The number of long-term unemployed, or those who have been unemployed for greater than six months, is twice as high as a year ago and now comprise 40 percent of all of the unemployed

LONG-TERM UNEMPLOYED

Demographics of the Long-term Unemployed (in thousands)

	2009				1 st Half of 2010				Percentage Point Chg. 2009-2010	
	US	Pct.	PA	Pct.	US	Pct.	PA	Pct.	US	PA
TOTAL	4,531		141.3		6,666		231.9			
Percent of All Unemployed		32%		27%		44%		39%	12%	12%
Gender										
Male	2,711	60%	79.5	56%	4,112	62%	148.6	64%	2%	8%
Female	1,820	40%	61.8	44%	2,554	38%	83.3	36%	-2%	-8%
Race										
Black, non-Hispanic	957	21%	28.3	20%	1,336	20%	26.9	12%	-1%	-8%
Hispanic	752	17%	10.9	8%	1,111	17%	25.1	11%	0%	3%
Other, non-Hispanic	289	6%	6.1	4%	422	6%	10.8	5%	0%	1%
White, non-Hispanic	2,533	56%	95.9	68%	3,797	57%	169.1	73%	1%	5%
Age										
16-19	169	4%	4.6	3%	176	3%	7.7	3%	-1%	0%
20-24	544	12%	13.5	10%	775	12%	27.1	12%	0%	2%
25-34	1,031	23%	32.8	23%	1,591	24%	51.2	22%	1%	-1%
35-44	950	21%	37.9	27%	1,378	21%	48.1	21%	0%	-6%
45-54	1,036	23%	29.7	21%	1,539	23%	44.6	19%	0%	-2%
55-64	624	14%	16.4	12%	973	15%	45.3	20%	1%	8%
65 and over	177	4%	6.5	5%	235	4%	8.0	3%	0%	-2%
Education										
Less than high school	812	18%	18.5	13%	1,089	16%	42.3	18%	-2%	5%
High school graduates	1,674	37%	68.2	48%	2,646	40%	111.4	48%	3%	0%
Some college	906	20%	20.0	14%	1,288	19%	33.9	15%	-1%	1%
Associate degree	378	8%	10.6	8%	496	7%	11.9	5%	-1%	-3%
Bachelor's or higher	761	17%	24.0	17%	1,147	17%	32.4	14%	0%	-3%
Marital Status										
Married Spouse Present	1,754	39%	46.5	33%	2,690	40%	105.8	46%	1%	13%
Marital Status Other	993	22%	29.5	21%	1,424	21%	31.4	14%	-1%	-7%
Never Married	1,784	39%	65.4	46%	2,552	38%	94.6	41%	-1%	-5%

- The long-term unemployed are those who have been unemployed for greater than 26 weeks.
- During the first half of 2010, the percentage of the unemployed who are long-term unemployed increased to 39 percent in PA. The U.S. increased to 44 percent.
- The long-term unemployed tend to be from one or more of the following groups: male, white, age 25 to 34, high school graduates, and married.

UNEMPLOYMENT COMPENSATION

Unemployment Compensation (Individual Payments)

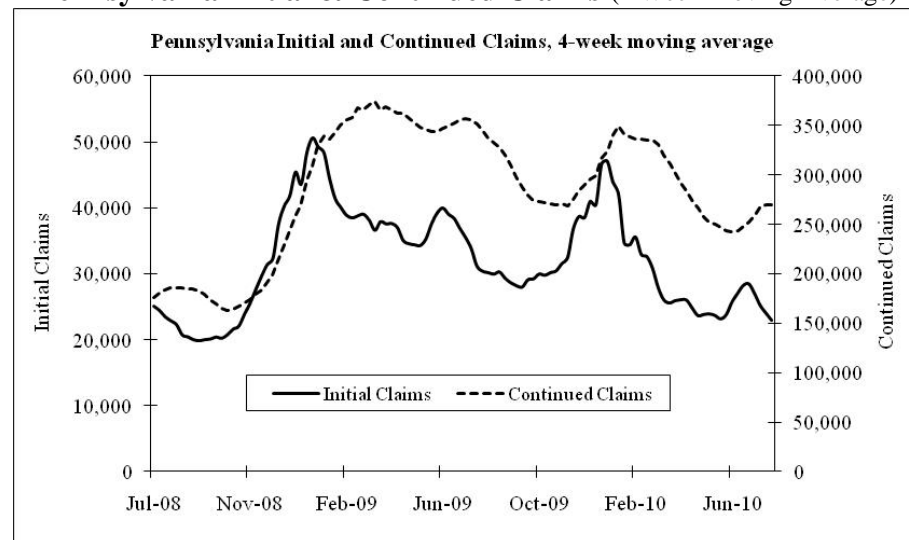
Number of individuals receiving unemployment compensation benefits, including federal extension of benefits as of July 31, 2010:

Program	Count week ending (Jul 31)	Distinct Count (Jul 31) Since 2/18/09	Count week ending (Jun 26)	Count week ending (Jan 30)
Total	433,700	1,194,500	454,800	561,400
Regular UC	204,000	1,084,000	215,800	292,600
Emergency UC	208,800	575,000	218,500	264,900
Extended Benefits	20,900	122,300	20,500	3,800

- The number of individuals who have exhausted regular state UC benefits (26 weeks) and are receiving some form of emergency or extended benefits is 229,700
- The total number of individuals receiving UC benefits is lower than both last month and six months ago
- The total of those individuals receiving emergency UC benefits is lower than one month ago and six months ago
- The total of those receiving regular UC is lower than both one month and six months ago

CLAIMS

Pennsylvania Initial & Continued Claims (4 Week Moving Average)



All claims data are not seasonally adjusted.

Regular Compensation

- Initial claims for July are 121,500, O-T-Y -41,600, -26%
- Cont. claims for July are 1,105,500, O-T-Y -355,100, -24%

Emergency Compensation

- Initial claims for July are 42,800, O-T-Y +114, +0.3%
- Cont. claims for July are 404,300, O-T-Y -16,700, -4%

O-T-M: Over the Month
O-T-Y: Over the Year

Extended Benefits

- Initial claims for July are 23,000, O-T-Y +14,600, +175%
- Continued claims for July are 119,000, O-T-Y -68,300, -37%

Exhaustions

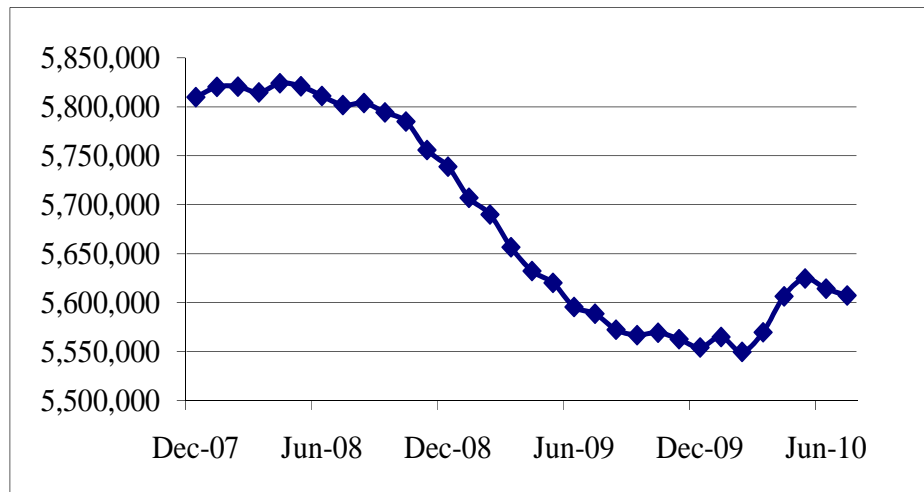
- In July, total exhaustions were 5,600. This count reflects the total number of persons in the month who have exhausted all available state and federal UC benefits under current law, up to a maximum of 99 weeks of benefits. Through July 31, 2010, total exhaustions were 45,600.
- July Exhaustions by program: Reg. 37,000, EUC 13,600, EB 200. These counts are reflective of persons exhausting in individual programs only.

Unemployment Compensation Fund Balance

- As of December 31, 2007 = \$1,555,000,000
- As of July 31, 2010 = (-\$2,448,000,000)

JOBS

PA Total Nonfarm Jobs July 2010 (Seasonally Adjusted)



PA Job Facts

- Pennsylvania's Nonfarm jobs at 5,607,300 in July
- O-T-M change for July is -7,000 (-0.1%), second straight O-T-M decline
- O-T-Y change for July is +18,600 (+0.3%), virtually unchanged from last month's O-T-Y gain
- Change since December 2007 is -202,600 (-3.5%)
- Global Insight forecasts Nonfarm jobs to have bottomed in first quarter 2010 and to recover in third quarter 2012 at 5,825,000

O-T-M: Over the Month
O-T-Y: Over the Year

US Job Facts

- U.S. nonfarm jobs at 130.2 million in July
- O-T-M job change is -131,000, change since Dec. 2007 is -7.7 million (-5.6%)
- O-T-Y change for July is -52,000 (-0.04%)

PA Jobs Detail

- Goods-producing industries July change is +2,500, and change since December 2007 is -131,800 (-14.1%)
- Manufacturing O-T-M change is -400, second straight O-T-M decline
- Mining & Logging O-T-M change is +500, O-T-Y up 3,100 (14.2%)
- Service-providing industries July change is -9,500, change since December 2007 is -70,800 (-1.5%)
- Professional & Business Services O-T-M is -2,200, O-T-Y up 15,400 (2.3%)
- Leisure & Hospitality O-T-M is +3,400 (casinos), O-T-Y up 16,100 (3.3%)
- Federal Government July change is -6,800 (due to the Census)

INDUSTRY

Pennsylvania Nonagricultural Wage & Salary Employment Seasonally Adjusted

	July 2010	Change from June '10	Change from Dec '07	
			volume	percent
Total Non-farm Jobs	5,607,300	-7,000	-202,600	-3.5
Goods Producing Industries	803,600	2,500	-131,800	-14.1
Mining & Logging	24,900	500	3,600	16.9
Construction	220,200	2,400	-39,500	-15.2
Manufacturing	558,500	-400	-95,900	-14.7
Durable Goods	333,700	-100	-70,900	-17.5
Nondurable Goods	224,800	-300	-25,000	-10.0
Service Providing Industries	4,803,700	-9,500	-70,800	-1.5
Trade, Transp. & Utilities	1,075,000	-1,600	-58,600	-5.2
Wholesale Trade	221,000	0	-19,000	-7.9
Retail Trade	625,900	-1,600	-29,200	-4.5
Transp., Warehouse & Utilities	228,100	0	-10,400	-4.4
Information	97,300	-100	-11,200	-10.3
Financial Activities	309,900	1,700	-22,000	-6.6
Finance & Insurance	251,500	900	-13,700	-5.2
Real Estate & Rental & Leasing	58,400	800	-8,300	-12.4
Professional & Business Svcs.	679,100	-2,200	-33,300	-4.7
Professional & Technical Svcs.	296,300	1,600	-17,800	-5.7
Management of Companies	114,000	-1,000	3,100	2.8
Admin & Waste Services	268,800	-2,800	-18,600	-6.5
Education & Health Services	1,127,900	-100	43,300	4.0
Educational Services	227,800	100	6,000	2.7
Health Care & Social Assistance	900,100	-200	37,300	4.3
Leisure & Hospitality	509,800	3,400	6,100	1.2
Arts, Entertainment & Recreation	97,900	4,200	11,900	13.8
Accommodations & Food Svcs.	411,900	-800	-5,800	-1.4
Other Services	248,300	-200	-6,700	-2.6
Government	756,400	-10,400	11,600	1.6
Federal Government	111,200	-6,800	7,500	7.2
State Government	157,700	-1,000	-800	-0.5
Local Government	487,500	-2,600	4,900	1.0

INDUSTRY HIGHLIGHTS

Industries with Strongly Growing Companies in 2009

(as determined by the Strategic Early Notice Econometric Model)

Industry	Growth Companies	Industry	Growth Companies
Health Care & Social Assistance	282	Admin., Waste, & Remediation	78
Professional, Scientific, & Tech. Srvs	127	Admin. & Support Services	58
Manufacturing	85	Construction	55

Growing Companies Detail

- Total number of strongly growing companies in 4th quarter 2009 = 1,054
- In **Health Care & Social Assistance** – Home Health Care Services, Offices of Physicians, Nursing Care Facilities, Outpatient Care Centers, Other Ambulatory Health Care Services, Community Care Facilities for the Elderly
- In **Professional, Scientific, & Tech. Services** - Architectural & Engineering & Related Services, Scientific Research and Development Services, Computer Systems Design & Related Services
- In **Manufacturing** – Navigational - Measuring – Electromedical & Control Instruments , Medical Equipment & Supplies Manufacturing, Semiconductor & Other Electronic Component Manufacturing
- In **Accommodation & Food Services** – Lmt. Service Eating Places, Full-Service Restaurants
- In **Administrative, Waste, Remediation Services** – Employment Services, Business Support Services, Waste Collection
- In **Construction** - Utility System Construction, Highway-Street-Bridge Construction, Foundation, Structure, Building Exterior Contractors

Industries with Strongly Declining Companies in 2009

(as determined by the Strategic Early Notice Econometric Model)

Industry	Declining Companies	Industry	Declining Companies
Manufacturing	546	Administrative, Waste, & Remediation	136
Construction	236	Transportation & Warehousing	94
Wholesale Trade	167	Information	51

Declining Companies Detail

- Total number of strongly declining companies in 4th quarter 2009 = 2,080
- In **Manufacturing** - Architectural & Structural Metals Mfg., Printing & Related Support Activities, Plastics Product Manufacturing, Machine Shops - Turned Product - Screw - Nut & Bolt Mfg., Other General Purpose Machinery Manufacturing

PA EMPLOYER ACTIVITIES

(Based on published media news reports and articles)

Employers Reported^{1/} to have Openings or Expansions by Industry

Industry	February 2010 to July 2010	
	Employers	Employment Gain
Mining	1	51
Manufacturing	10	1,099
Wholesale Trade	1	65
Retail Trade	27	2,460
Transportation & Warehousing	3	1,000
Information	1	100
Financial Activities	2	116
Professional & Business Services	6	975
Education & Health Services	5	451
Leisure & Hospitality	21	4,883
Other Services	1	25
Total	78	11,225

^{1/}Compilation of employers and employment gain may be unconfirmed and incomplete.

Employers Reported^{1/} to have Closings or Layoffs^{2/} by Industry

Industry	February 2010 to July 2010	
	Employers	Employment Loss
Construction & Mining	2	-232
Manufacturing	22	-2,863
Wholesale Trade	3	-265
Retail Trade	12	-695
Transportation & Warehousing	8	-915
Information	3	-554
Financial Activities	16	-1,646
Professional & Business Services	8	-1,700
Education & Health Services	13	-714
Leisure & Hospitality	13	-664
Other Services	0	0
Government	1	-40
Total	101	-10,288

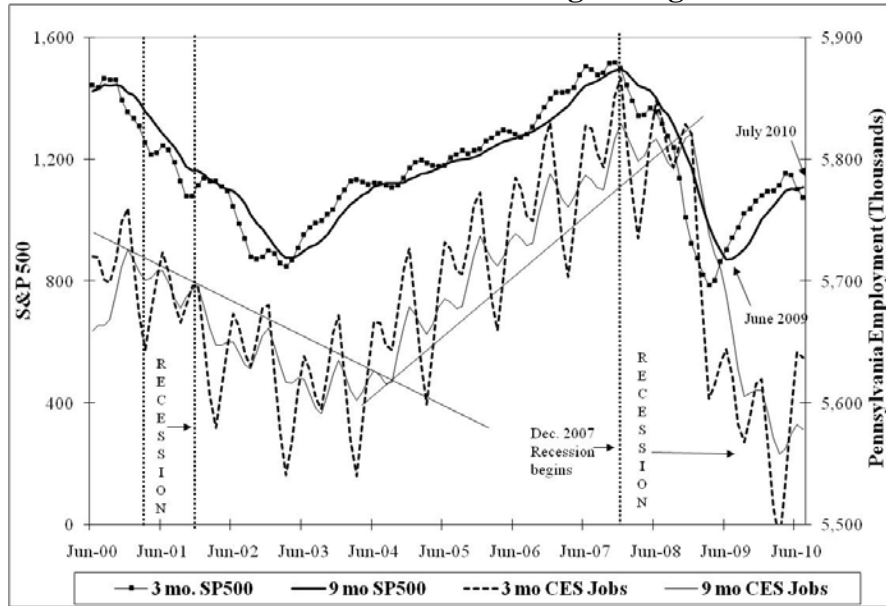
^{1/}Compilation of employers and employment loss may be unconfirmed and incomplete.

^{2/}Includes temporary layoffs.

- Employment gains from employers reported to have openings or expansions outpaced employment losses from employers reported to have closings or layoffs, 11,225 vs. 10,288 from Feb to Jul 2010.
- Employers in leisure & hospitality led all employers reporting gains with 21 firms reporting a total employment gain of 4,883.
- Employers in manufacturing led all employers reporting losses with 22 firms reporting a total employment loss of 2,863.

ECONOMIC INDICATORS

S&P 500 vs. Pennsylvania CES Employment, 2000 - 2010,
3-month vs. 9-month moving averages



S&P 500 Index

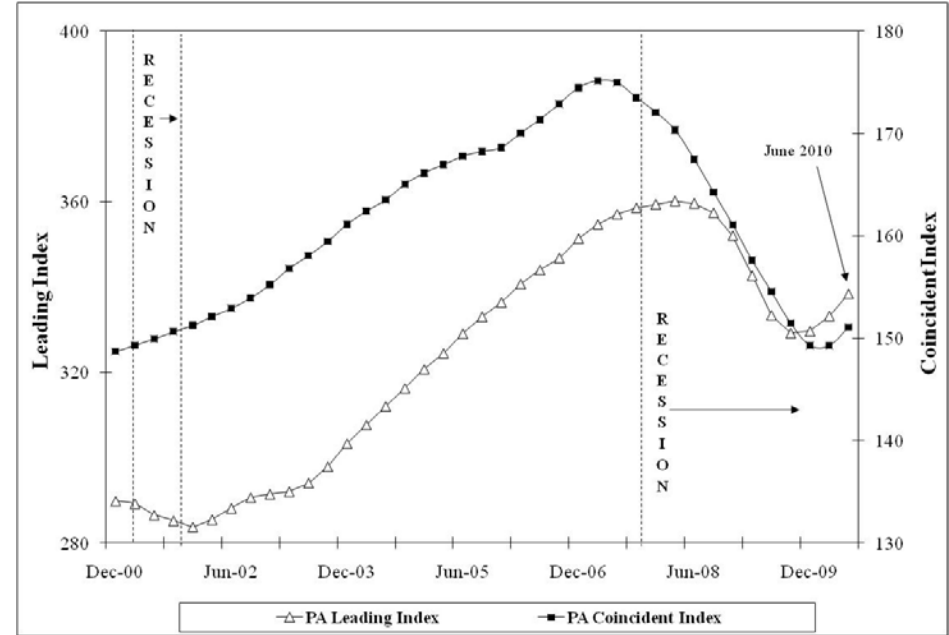
- The Standard & Poor's 500 index closed at 1,102 in July
 - The O-T-M change was +71 points (+7%)
 - The O-T-Y change was +114 points (+12%)
- O-T-M: Over the Month
O-T-Y: Over the Year

The S&P 500 index is an excellent leading indicator as to the direction of the economy and thus employment. When the three-month simple moving average (SMA) crosses the nine-month SMA a prediction can be made as to the direction of the economy and employment.

- In June 2009, the 3-month SMA crossed the 9-month SMA upwards, signaling the start of a possible economic recovery
- May and June's O-T-M negative change has caused the 3-month SMA to cross the 9-month SMA downwards. While this does occur in uptrends it is a cause for concern. If the 3-month SMA does not cross the 9-month SMA back upwards in the next few months than the fledgling recovery could be over.
- Both the 3-month and 9-month SMAs show that employment appears to have reached a near term bottom in March 2010.

ECONOMIC INDICATORS

Pennsylvania Leading and Coincident Indexes, Quarterly Average



Leading Index

Pennsylvania's leading index reflects where the economy is headed. The index is constructed from the state's current coincident index, housing permits, initial unemployment claims, and vendor delivery time.

- In June, the quarterly average of the index stood at 338.4, higher than the previous quarter's reading of 333.2, the third quarter in a row where the index has been higher than the previous quarter.
- A change in trend of this index signals a turn in the economy. December's trend change upward may signal an economic recovery is beginning.

Coincident Index

Pennsylvania's coincident index is a measure of current economic activity. The index is constructed from employment, hours worked in manufacturing, the unemployment rate and wage disbursements.

- In June, the quarterly average of the index was 151.1, an increase from the previous quarter's reading of 149.3. Like the leading index, a change in trend of this index signals a turn in the economy.

MASS LAYOFF STATISTICS

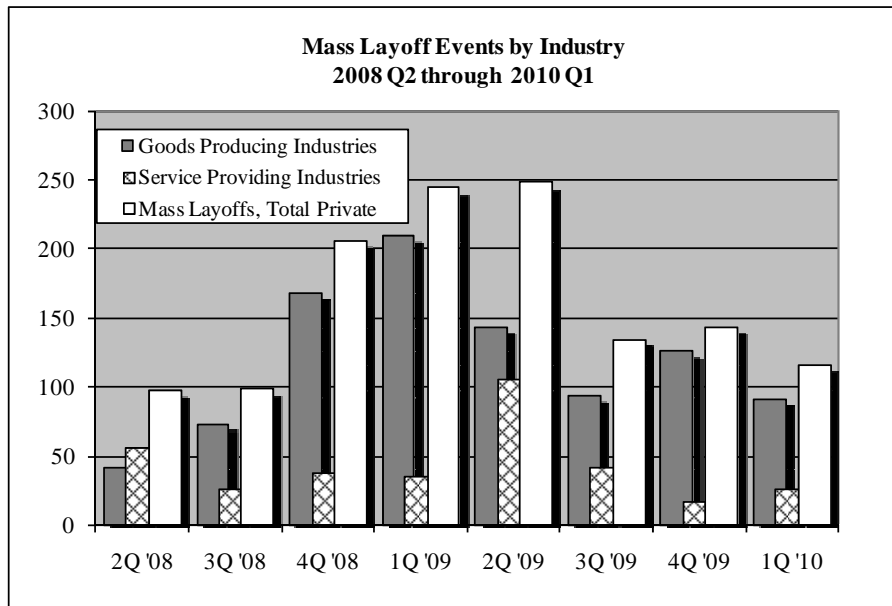
Statewide Mass Layoff Events by Industry 2010 Q1 and 2009 Q1

Major Industry Division	Total Estabs.	2010 Q1		2009 Q1	
		Estabs. with Layoffs	Total Separations	Estabs. with Layoffs	Total Separations
Goods Producing Industries	46,220	91	11,394	209	28,341
Construction	29,160	49	4,925	35	3,109
Manufacturing	14,381	41	6,319	169	24,594
Service Providing Industries	222,386	25	3,736	35	10,796
Trade, Transportation & Utilities	55,967	11	1,538	20	9,197
Professional & Business Svcs.	112,407	10	1,788	8	842
Leisure & Hospitality	25,698	4	410	7	757
Total, Private	268,606	116	15,130	244	39,137

Total Establishments (Estabs.) - Number of establishments within the Industry Division

Establishments with Layoffs - Number of establishments with a layoff event involving 50 or more employees, lasting longer than 30 days

Total Separations - Number of employees affected by layoff event



NEW HIRES

Pennsylvania New Hires, 2008 to 2009, 3rd Quarter

	2009 Q3	2008 Q3	Change from 2008	
			volume	percent
Total New Hires	544,600	682,700	-138,100	-20%
Goods Producing Industries	58,000	72,000	-14,000	-19%
Ag, Forestry, Fishing, Hunt.	2,500	3,000	-500	-17%
Mining	1,300	1,600	-300	-19%
Construction	25,200	29,000	-3,800	-13%
Manufacturing	29,000	38,400	-9,400	-24%
Service Providing Industries	486,600	611,000	-124,400	-20%
Trade, Transp. & Utilities	91,100	123,000	-31,900	-26%
Wholesale Trade	11,400	14,800	-3,400	-23%
Retail Trade	56,400	72,200	-15,800	-22%
Transp., Warehouse & Utilities	23,300	36,000	-12,700	-35%
Information	7,100	8,200	-1,100	-13%
Financial Activities	13,500	15,400	-1,900	-12%
Finance & Insurance	10,000	10,600	-600	-6%
Real Estate & Rental & Leasing	3,500	4,800	-1,300	-27%
Professional & Business Svcs.	112,500	156,100	-43,600	-28%
Professional & Technical Svcs.	16,700	21,900	-5,200	-24%
Management of Companies	2,200	2,400	-200	-8%
Admin & Waste Services	93,600	131,800	-38,200	-29%
Education & Health Services	132,500	141,900	-9,400	-7%
Educational Services	68,300	72,700	-4,400	-6%
Health Care & Social Assistance	64,200	69,200	-5,000	-7%
Leisure & Hospitality	77,600	94,500	-16,900	-18%
Arts, Entertainment & Recreation	15,800	17,500	-1,700	-10%
Accommodations & Food Svcs.	61,800	77,000	-15,200	-20%
Other Services	12,600	17,800	-5,200	-29%
Government	3,100	4,100	-1,000	-24%
Unclassified industry	36,600	50,000	-13,400	-27%

- **Industries with at least 500 new hires above year ago levels** - Power and Communication Line and Related Structures Construction; Construction Machinery Manufacturing; Vocational Rehabilitation Services; Family Clothing Stores, Services for the Elderly and Persons with Disabilities; Heavy Duty Truck Manufacturing; Third Party Administration of Insurance and Pension Funds, Amusement and Theme Parks; Chocolate and Confectionery Manufacturing from Cacao Beans.
- **Top ten industries that have new hires below year ago levels** - Temporary Help Services; Full-Service Restaurants; Couriers and Express Delivery Services; Employment Placement Agencies; Sporting Goods Stores; Limited-Service Restaurants; Elementary and Secondary Schools; Security Guards and Patrol Services; Supermarkets and Other Grocery (except Convenience) Stores; Landscaping Services.

OTHER STATES' RATES

Current Unemployment Rates for States and Historical Highs/Lows*
Seasonally Adjusted

State	July 2010	Historical High		Historical Low	
	Rate	Date	Rate	Date	Rate
NV	14.3	Jul-10	14.3	Apr-00	3.8
MI	13.1	Dec-82	16.8	Mar-00	3.3
CA	12.3	Apr-10	12.6	Jan-01	4.7
RI	11.9	Feb-10	12.7	Jul-88	2.9
FL	11.5	Mar-10	12.3	May-06	3.3
MS	10.8	Apr-83	13.5	Apr-01	4.9
SC	10.8	Feb-10	12.5	Mar-98	3.2
OR	10.6	Jan-83	12.1	Feb-95	4.7
IL	10.3	Feb-83	12.9	Feb-99	4.2
OH	10.3	Jan-83	13.9	Jan-01	3.8
IN	10.2	Jan-83	12.7	Apr-99	2.6
GA	9.9	Mar-10	10.6	Dec-00	3.3
KY	9.9	Jan-83	12.0	Jun-00	4.1
DC	9.8	Jan-10	12.0	May-89	4.8
NC	9.8	Feb-10	11.2	Mar-99	3.1
TN	9.8	Jan-83	12.8	May-00	3.9
AL	9.7	Dec-82	14.3	Apr-07	3.3
NJ	9.7	Dec-76	10.7	Jul-00	3.6
AZ	9.6	Jan-83	11.6	Jul-07	3.7
PA	9.3	Mar-83	12.9	Mar-00	4.0
MO	9.2	Feb-83	10.6	Jan-00	2.8
MA	9.0	Jan-76	11.1	Oct-00	2.6
CT	8.9	Jan-76	9.4	Oct-00	2.1
WA	8.9	Nov-82	12.2	May-07	4.4
ID	8.8	Feb-83	9.6	Mar-07	2.7
WV	8.6	Mar-83	18.1	Apr-08	3.9

*Note: Data series begin in January 1976.

BUSINESS EMPLOYER DYNAMICS

Business Employer Dynamics (BED) presents a new way of looking at the dynamics of the commonwealth's overall labor market and shows the constant churning of jobs. Exploring the labor market from this perspective points out that there are consistently significant job gains and job losses every month. Business Employment Dynamics data compiled by the U.S. Bureau of Labor Statistics allows the tracking of employment changes at the establishment level, which in turn allows:

- *The computation of gross jobs gained at opening and expanding establishments and*
- *The gross jobs lost at closing and contracting establishments for the state.*

During fourth quarter 2009 (October 1, 2009 to December 31, 2009), Pennsylvania

- **Gained 263,561 jobs** through either establishments expanding or new job openings
- **Lost 264,761 jobs** through either establishments contracting or closing
- Resulting in a net job loss of **1,200**

During the same period, Pennsylvania had

- **73,185 job gaining** establishments through either expansions or openings and
- **74,920 job losing** establishments through either contractions or closings

4th Quarter 2009 BED Comparison Among Select States

State	Gross Job Gains	Gross Job Losses	Net Job Change	Estabs. with Job Gains	Estabs. with Job Losses
NY	439,309	432,668	6,641	114,563	116,471
WV	36,970	34,837	2,133	10,374	10,703
PA	263,561	264,761	-1,200	73,185	74,920
DE	20,132	24,159	-4,027	5,363	6,439
NJ	197,142	204,741	-7,599	52,775	57,127
MD	118,233	131,474	-13,241	33,403	36,227
OH	235,084	255,156	-20,072	60,229	66,896

HELP WANTED ONLINE ADS

Pennsylvania Help Wanted Online Active Ads by Industry

Industry	July 2010	July 2009	Change
Total Ads by Industry	181,596	-	-
Goods Producing Industries	8,283	5,211	3,072
Ag, Forestry, Fishing, Hunt.	66	57	9
Mining	239	147	92
Construction	865	584	281
Manufacturing	7,113	4,423	2,690
Service Providing Industries	88,285	79,160	9,125
Trade, Transp. & Utilities	20,481	12,056	8,425
Wholesale Trade	5,243	4,408	835
Retail Trade	11,958	6,190	5,768
Transp., Warehouse & Utilities	3,280	1,458	1,822
Information	4,609	3,202	1,407
Financial Activities	9,941	6,750	3,191
Finance & Insurance	6,795	5,249	1,546
Real Estate & Rental & Leasing	3,146	1,501	1,645
Professional & Business Svcs.	26,992	31,370	-4,378
Professional & Technical Svcs.	10,859	9,816	1,043
Management of Companies	77	87	-10
Admin & Waste Services	16,056	21,467	-5,411
Education & Health Services	20,153	19,579	574
Educational Services	2,995	2,935	60
Health Care & Social Assistance	17,158	16,644	514
Leisure & Hospitality	3,461	2,519	942
Arts, Entertainment & Recreation	392	218	174
Accommodations & Food Svcs.	3,069	2,301	768
Other Services	1,836	1,326	510
Government	812	2,358	-1,546
Unclassified or unavailable industry	85,028	-	-

*Note: Help Wanted Online Ads by Industry and Occupation are compiled differently and totals will not equal each other.

HELP WANTED ONLINE ADS

Pennsylvania Help Wanted Online Active Ads by Occupation

Occupation	July 2010	July 2009	Change
Total	182,710	155,963	26,747
Healthcare Practitioners & Technical	26,873	30,648	-3,775
Sales & Related	24,269	18,663	5,606
Office & Administrative Support	18,436	15,512	2,924
Computer & Mathematical	18,416	14,052	4,364
Management	16,437	13,575	2,862
Business & Financial Operations	9,712	7,782	1,930
Healthcare Support	8,980	9,335	-355
Transportation & Material Moving	8,194	4,547	3,647
Architecture & Engineering	5,985	4,503	1,482
Food Preparation & Serving Related	5,520	4,520	1,000
Installation, Maintenance, & Repair	5,420	3,990	1,430
Production	4,246	3,151	1,095
Arts, Design, Entertainment, Sports, & Media	3,665	2,875	790
Education, Training, & Library	3,042	2,966	76
Life, Physical, & Social Science	2,695	2,215	480
Construction & Extraction	2,617	1,883	734
Community & Social Services	2,454	2,023	431
Building & Grounds Cleaning & Maintenance	2,124	1,691	433
Personal Care & Service	2,062	2,177	-115
Protective Service	1,182	953	229
Legal	970	896	74
Farming, Fishing, & Forestry	124	94	30
Military Specific	92	144	-52
Miscellaneous	8,997	7,768	1,229

*Note: Help Wanted Online Ads by Industry and Occupation are compiled differently and totals will not equal each other.

HELP WANTED ONLINE ADS

Pennsylvania Top 25 Industries Help Wanted Online Active Ads

Industry	July 2010
Employment Placement Agencies	5,063
Temporary Help Services	4,894
General Medical & Surgical Hospitals	3,074
Nursing Care Facilities	2,540
Commercial Banking	2,531
All Other Miscellaneous Ambulatory Health Care Services	2,524
Home Health Care Services	2,249
Software Publishers	2,233
Radio, Television, & Other Electronics Stores	2,073
Computer Systems Design Services	1,837
Video Tape & Disc Rental	1,800
All Other Business Support Services	1,726
Executive Search Services	1,552
Book, Periodical, & Newspaper Merchant Wholesalers	1,551
Office Supplies & Stationery Stores	1,455
Offices of Physicians	1,433
Colleges, Universities, & Professional Schools	1,301
Admin. Mgmt & General Mgmt Consulting Svcs	1,291
General Freight Trucking, Long-Distance, Truckload	1,177
Engineering Services	1,175
Offices of Certified Public Accountants	1,165
Pharmaceutical Preparation Manufacturing	1,159
Specialty Hospitals	1,134
Limited-Service Restaurants	1,056
Insurance Agencies & Brokerages	983

HELP WANTED ONLINE ADS

Pennsylvania Top 25 Occupations Help Wanted Online Active Ads

Occupation	July 2010
Registered Nurses*	6,736
Supervisors of Retail Sales Workers	5,587
Retail Salespersons	4,977
Physical Therapists*	4,601
Customer Service Representatives*	4,238
Truck Drivers, Heavy & Tractor-Trailer*	4,078
Computer Systems Analysts*	3,725
Occupational Therapists*	3,333
Nursing Aides, Orderlies, & Attendants*	2,953
Web Developers*	2,699
Licensed Practical Nurses*	2,473
Sales Representatives, Wholesale & Mfg*	2,454
Computer Support Specialists*	2,393
Executive Secretaries & Admin. Assistants	2,379
Medical & Health Services Managers*	2,346
Marketing Managers	2,003
Supervisors of Food Prep. & Serving Workers	1,997
Accountants*	1,981
Sales Managers	1,978
Sales Representatives, Services, All Other	1,951
Industrial Engineers*	1,938
Computer Software Engineers, Applications*	1,821
Speech-Language Pathologists	1,787
Supervisors of Office & Admin. Support	1,778
Sales Agents, Financial Services	1,751

*2010 High Priority Occupation (HPO) for PA

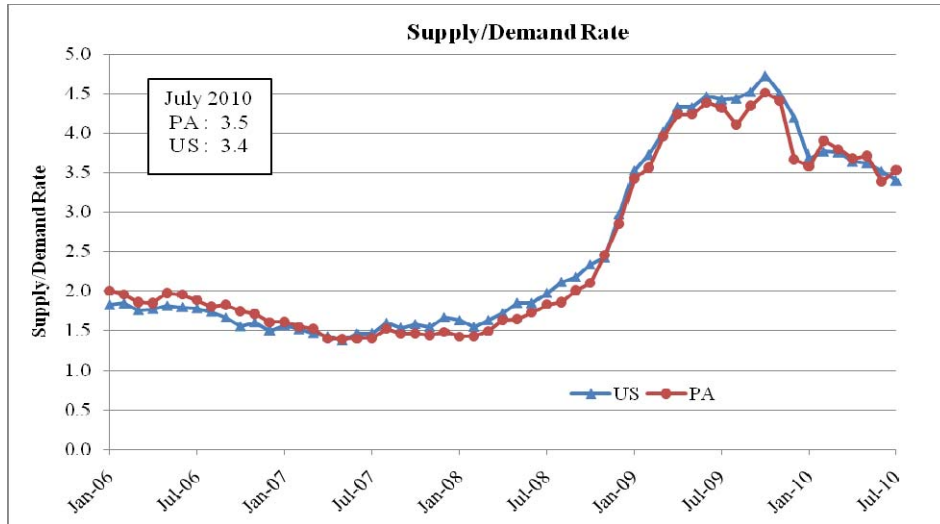
HELP WANTED ONLINE ADS

Pennsylvania Top 25 Employers Help Wanted Online Active Ads

Employer	Ads
IBM	969
Critical Connection	959
Deloitte	689
Merck	635
Blockbuster Inc.	631
Staples	561
Liberty Personnel Services, Inc .	543
Bayada Nurses	535
Genesis HealthCare	502
Wells Fargo	407
Children's Hospital of Philadelphia	403
AT&T	356
StaffPointe - Medical Search	356

Employer	Ads
Allegis Group	325
Comcast	310
TWC Group	295
Devereux	293
TD Bank, NA	272
Judge Group, Inc.	259
TEKsystems	250
Community Health Systems	247
360 Healthcare Staffing	235
ePeople, LLC	227
Aramark	226
MAS Medical Staffing	220

Help Wanted Online Ads Supply Demand Rate (Low ratio is desired)



Supply: Number of Unemployed
Demand: Number of Ads

Supply Demand Rate:
Number of Unemployed / Number of Ads

GLOBAL INSIGHT

Unemployment Rate Short Term Forecast

	2010 Q2	2010 Q3	2010 Q4	2011 Q1	2011 Q2
PA	9.1%	9.0%	8.9%	8.7%	8.3%
US	9.7%	9.5%	9.7%	9.6%	9.5%

- Global Insight forecasts Pennsylvania's unemployment rate to be at 9.0% and the U.S. at 9.5% in third quarter 2010

Pennsylvania Nonfarm Jobs Short Term Forecast (Seasonally adjusted data, in thousands)

	2010 Q2	2010 Q3	2010 Q4	2011 Q1	2011 Q2
PA	5,617	5,616	5,625	5,639	5,660
US	130,376	130,226	130,324	130,578	130,987

- Global Insight forecasts Pennsylvania's nonfarm jobs to have bottomed in first quarter 2010 and the U.S. in fourth quarter 2009

Pennsylvania Nonfarm Jobs Long Term Forecast (Seasonally adjusted data, in thousands)

	Nonfarm Job Peak 2008 Q1	Nonfarm Job Trough 2010 Q1	Forecast Recovery 2012 Q3	Change from Trough to Recovery	
				volume	percent
Total Nonfarm Jobs	5,819	5,561	5,825	264	4.7%

NEWS OF THE MONTH:

Monthly job gains/losses since the start of the Recession

2008		2009		2010	
Month	Gain/Loss	Month	Gain/Loss	Month	Gain/Loss
Jan	10,500	Jan	-31,800	Jan	10,700
Feb	200	Feb	-17,100	Feb	-15,200
Mar	-5,900	Mar	-33,400	Mar	20,000
Apr	9,400	Apr	-24,300	Apr	36,700
May	-3,100	May	-12,100	May	18,300
Jun	-9,900	Jun	-24,600	Jun	-10,400
July	-9,300	July	-6,900	July	-7,000
Aug	2,100	Aug	-16,300	Aug	
Sep	-9,600	Sep	-5,600	Sep	
Oct	-9,300	Oct	2,500	Oct	
Nov	-29,100	Nov	-6,600	Nov	
Dec	-17,000	Dec	-8,500	Dec	
Total	-71,000	Total	-184,700	Total	53,100

As of July 2010, the total number of jobs lost since the beginning of the recession (December 2007) is 202,600

Underemployment

The number of unemployed is over half a million Pennsylvanians. If we add in the underemployed, or those people working part time who would like full time jobs or who have dropped out of the labor market entirely and still want a job, the number of unemployed Pennsylvanians increases to 1 million people. Pennsylvania's unemployment rate is 9.3 percent, but its underemployment rate or "true" unemployment rate is 15.5 percent.

Pennsylvania Fast Facts is now available online!

Find it at: www.paworkstats.state.pa.us on the home page

DEFINITIONS:

LABOR FORCE STATISTICS - Source: U.S. Bureau of Labor Statistics, Current Population Survey

The Current Population Survey (CPS) is a monthly survey of households conducted by the United States Census Bureau for the Bureau of Labor Statistics. It provides a comprehensive body of data on the labor force, employment, unemployment and persons not in the labor force by geographic area. The CPS is a count of people.

Unemployment Rate: the number unemployed as a percent of the labor force.

Unemployment: Unemployed persons are persons aged 16 years and older who had no employment during the reference week (contains the 12th day of the month), were available for work (except for temporary illness), and had made specific efforts to find employment sometime during the 4-week period ending with the reference week. Persons who were waiting to be recalled to jobs from which they had been laid off need not to have been looking for work to be classified as unemployed.

Employment: Employed persons are all persons who, during the week which includes the 12th day of the month, (a) did any work as paid employees, worked in their own businesses or professions or on their own farm, or worked 15 hours or more as unpaid workers in enterprises operated by members of their families, or (b) were not working but who had jobs from which they were temporarily absent. Each employed person is counted only once, even if the person holds more than one job. Included are the self-employed, unpaid family workers, agricultural workers, and private household workers, who are excluded by the Current Employment Statistics survey.

Labor Force: all persons either working or looking for work or classified as employed or unemployed.

UNEMPLOYMENT DEMOGRAPHICS - Source: U.S. Bureau of Labor Statistics, CPS

Demographics: characteristics of a population

Discouraged Workers: Persons not in the labor force who want and are available for a job and who have looked for work sometime in the past 12 months, but who are not currently looking because they believe there are no jobs available or there are none for which they would qualify.

Duration of unemployment: The length of time in weeks (through the current reference week) that persons classified as unemployed had been looking for work.

Labor Force Participation Rate: The labor force as a percent of the civilian noninstitutional population.

Employment to population ratio: The proportion of the civilian noninstitutional population aged 16 years and over that is employed.

Part-time for economic reasons: persons who would like to work full time but were working part time (1 to 34 hours) because of an economic reason, such as their hours were cut back or they were unable to find full-time jobs.

Long-term Unemployed: those who have been unemployed for greater than 26 weeks.

Underemployment Rate - the number of unemployed plus those people working part time who would like full time jobs plus those who have dropped out of the labor market entirely and still want a job, as a percent of the labor force plus those people working part time who would like full time jobs plus those who have dropped out of the labor market entirely and still want a job.

UNEMPLOYMENT COMPENSATION - Source: The Pennsylvania Department of Labor & Industry and the U.S Department of Labor.

Unemployment Compensation (UC): Unemployment Compensation (UC) protects workers against job loss by providing temporary income support to people who become

DEFINITIONS:

UNEMPLOYMENT COMPENSATION (CONTINUED)

unemployed through no fault of their own. UC Benefits are paid, for a limited time, to individuals who are able and available for suitable work, and are actively seeking new employment. To qualify for UC benefits, a worker must have performed services covered under the Pennsylvania UC Law (Law), and must have worked for an employer who is required by Law or elects to pay into the UC Fund.

Regular UC: provides up to 26 weeks of benefits for unemployed workers, based on their earnings prior to becoming unemployed.

Emergency UC: Emergency Unemployment Compensation (EUC) is a federally funded extension of unemployment benefits for eligible individuals who exhausted their regular state unemployment insurance benefits and who are still unemployed.

Extended Benefits: EB is payable after EUC is exhausted and when additional EUC is not available.

Trade Act Benefits: The TAA program helps workers who have lost their jobs as a result of foreign trade. The TAA program offers a variety of benefits and services to eligible workers, including job training and income support.

Exhaustions: Exhaustion occurs when a worker draws the maximum amount of benefits to which he or she is entitled.

CLAIMS - Source: *The Pennsylvania Department of Labor & Industry and the U.S Department of Labor.*

Initial Claims: Initial claims measure the number of filings for state jobless benefits. An initial claim occurs when a person files a notice of unemployment to initiate a request to determine entitlement and eligibility for unemployment compensation. A person can file multiple claims.

Continued Claims: Continued claims measure the number of persons claiming unemployment benefits.

JOBS - Source: *Pennsylvania Department of Labor & Industry, Current Employment Statistics (CES).*

Each month the Current Employment Statistics program surveys about 200,000 national businesses and government agencies in order to provide detailed industry data on employment, hours, and earnings of workers on non-farm payrolls. This is a collaborative effort between BLS and the states. The CES is a count of jobs, not of people.

Seasonally Adjustment: Seasonal adjustment removes the change in employment that is due to normal seasonal hiring or layoffs (holidays, weather, etc.), thus leaving an over-the-month change that reflects only employment changes due to trend and irregular movements.

Nonfarm Jobs: Employment is the total number of persons on establishment payrolls employed full or part time who received pay for any part of the pay period that includes the 12th day of the month. Temporary and intermittent employees are included, as are any employees who are on paid sick leave, on paid holiday, or who work during only part of the specified pay period. A striking employee who only works a small portion of the survey period, and is paid, would be included as employed under the CES definitions. Persons on the payroll of more than one establishment are counted in each establishment. Data exclude proprietors, self-employed, unpaid family or volunteer workers, farm workers, and domestic workers. Persons on layoff the entire pay period, on leave without pay, on strike for the entire period, or who have not yet reported for work are not counted as employed. Government employment covers only civilian employees.

DEFINITIONS:

INDUSTRY - Source: *Pennsylvania Department of Labor & Industry, Current Employment Statistics.*

INDUSTRY HIGHLIGHTS - Source: *Pennsylvania Quarterly Census of Employment and Wages and the Center for Workforce Information & Analysis Strategic Early Notice Model.*

The Strategic Early Notice Model identifies probable companies and industries of importance. There are two types of notices: Early Warn Notices and Early Growth Notices. Early Warn notices are generated for companies and industries that are experiencing significant employment decline. Early Growth notices are generated for companies and industries that are experiencing significant employment growth. The model does not presuppose a cause for a company's decline or growth. Companies are selected based on an algorithmic model.

Early Warning Company: a company whose employment count has declined each quarter over the past year and has had unemployment claims activity. Only those companies having at least 20 employees at the beginning of the measurement period and having an employment decline of at least 10 percent are identified.

Early Growth Company: a company whose employment count has grown each quarter over the past year. Only those companies having at least 10 employees at the beginning of the measurement period and having employment growth of at least 10 percent are identified.

PA EMPLOYER ACTIVITIES - Source: *Based on published media news reports and articles.*

Compilation of employers and employment gain or loss may be unconfirmed and incomplete.

ECONOMIC INDICATORS - Source: *Standard & Poor's S&P500 Index, Current Employment Statistics, Federal Reserve Bank of Pennsylvania.*

S&P 500 Index: The Standard and Poor's 500 (S&P 500) is a composite index of the common stock prices of 500 large publicly held companies traded in the United States. The S&P 500 index is an excellent leading indicator as to the direction of the economy and thus employment. Plotting the index's three month simple moving average (SMA) versus the nine month SMA shows interesting results. When the three month SMA crosses the nine month SMA a prediction can be made as to the direction of the economy and employment.

PA CES Employment: Pennsylvania total Non-farm jobs.

PA Leading Index: Pennsylvania's leading index is a forecast of economic activity. The purpose of the index is to reflect where the economy is headed. The leading index is constructed from the state's current economic activity index, housing permits, initial unemployment claims, the index of vendor delivery time from the Philadelphia Fed's *Business Outlook Survey*, and the spread between the yields on 10-year Treasury bonds and the fed funds rate. A change in direction of the index may signal a change in the direction of the economy. Source data is revised significantly from month to month.

PA Coincident Index: Pennsylvania's coincident index is a measure of current economic activity. Individual economic indicators often produce conflicting signals on the health of the economy. For example, one indicator can be showing a gain while another reflects a loss. The purpose of the coincident index is to suppress these conflicting signals by combining a set of key measures to reflect the overall economic trend. The index is constructed from three monthly data series (payroll employment, average hours worked in manufacturing, and the unemployment rate) and one quarterly series (wage and salary disbursements). A change in direction of the index may signal a change in the direction of the economy. Source data is revised significantly from month to month.

DEFINITIONS:

MASS LAYOFF STATISTICS - Source: *The Pennsylvania Department of Labor & Industry and the U.S. Department of Labor.*

The MLS program collects and reports on mass layoff actions that result in workers being separated from their jobs. Monthly mass layoff numbers are from establishments which have at least 50 initial claims for unemployment insurance filed against them during a 5-week period.

NEW HIRES - Source: *The Pennsylvania Department of Labor & Industry*

New Hire Reporting is a process by which employers report information on all employees hired on or after January 1, 1998 to locate non-custodial parents, establish child support orders, or enforce existing orders. Company and individual data are confidential and cannot be reported on. However, the data can be aggregated to show where and in what industries hiring is taking place as an indication of what sectors of the economy are experiencing growth or decline. Approximately sixty percent of all new hires are captured. New hire counts by industry are an indication of trend only.

OTHER STATES RATES - Source: *U.S. Bureau of Labor Statistics*

BUSINESS EMPLOYMENT DYNAMICS - Source: *U.S. Bureau of Labor Statistics*

Business Employment Dynamics (BED) data track the expansion and contraction of employment for private businesses. These employment changes - gross job gains (expansions and openings) and gross job losses (reductions and closures) - are components of the net change in employment at the establishment level. These data help to provide a picture of the dynamic state of the labor market. For example, even in an economic recession there are businesses that hire as well as businesses that let workers go.

HELP WANTED ONLINE ADS - Source: *Wanted Analytics & The Conference Board*

Wanted Analytics provides real-time insight into the employment marketplace through the world's largest database of online job ads. Jobs ads can be classified by industry, occupation, employer, and geographic area. Data are analyzed for employment trends and to forecast economic conditions. The Conference Board provides the Supply Demand rate graph.

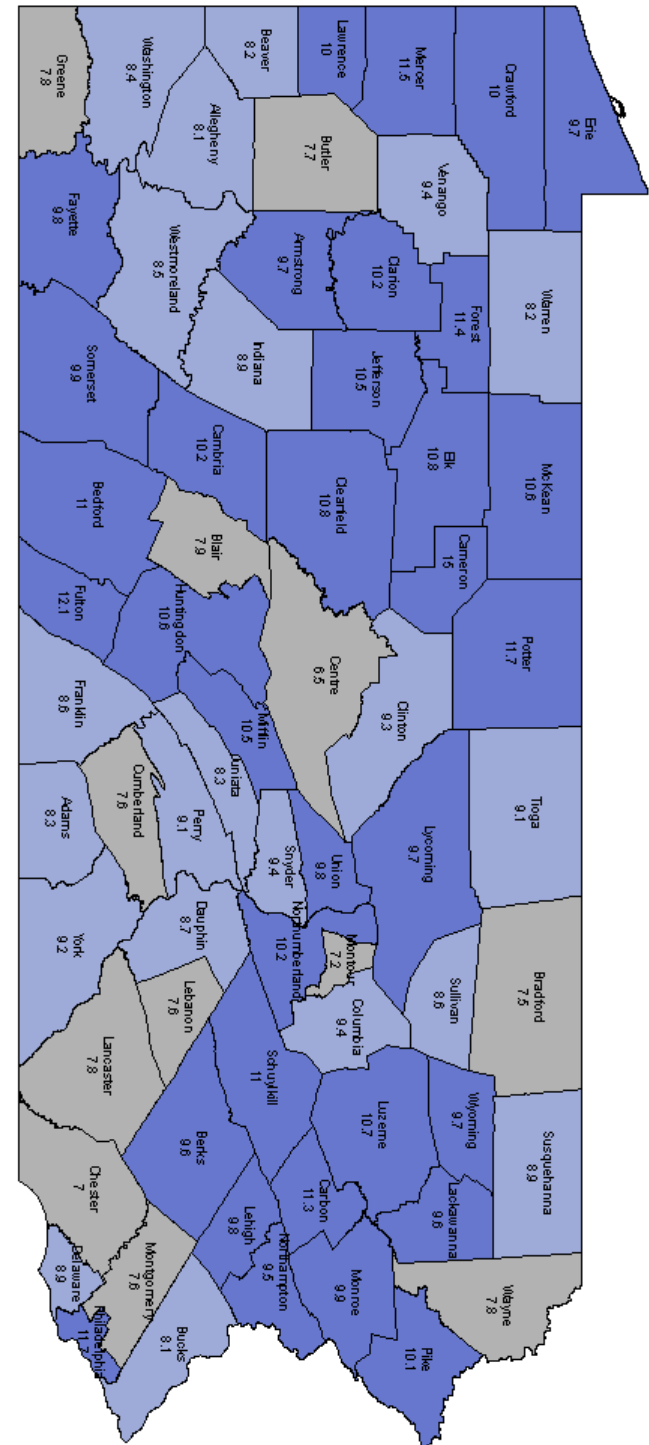
GLOBAL INSIGHT - Source: *IHS Global Insight.*

Global Insight is the world's largest economics organization, serving over 3,800 clients in industry, finance and government world-wide, with revenues of over \$95 million (in 2006) and employing more than 600 economists and other staff in 23 offices in 13 countries. Global Insight provides comprehensive economic and financial information on countries, regions and industries.

NEWS OF THE MONTH - Source: *Pennsylvania Department of Labor & Industry*

MAP OF UNEMPLOYMENT RATES BY COUNTY - Source: *Pennsylvania Local Area Employment Statistics (LAUS).*

**NEXT EDITION WILL BE OUT ON
SEPTEMBER 24, 2010**



JUNE COUNTY UNEMPLOYMENT RATES, SEASONALLY ADJUSTED