

# **Pennsylvania's Economy at a Glance December 2009 Edition**

The Pennsylvania Economy at a Glance report provides data and trend information on jobs, unemployment rate, employer registrations and other critical monthly economic indicators.

*The following pages contain an analysis of current economic conditions in Pennsylvania, based on the most recent data developed by the Center for Workforce Information & Analysis. Where available, seasonally adjusted data from 2004 to present are shown.*

## **Table of Contents**

<b><u>Content</u></b>	<b><u>Slides</u></b>
Pennsylvania & National Summary	3
Unemployment Rate, Current Labor Force Statistics	4-9
Jobs Statistics	10-12
Employer Activity, other Economic Indicators	13-16

## **Pennsylvania & National Summary**

### **Unemployment Facts**

#### **United States:**

- Unemployment rate is at 10.0 percent, down 0.2 of a percentage point over the month; unemployment level is at 15.4 million, down 325,000 from October 2009.

#### **Pennsylvania:**

- Unemployment rate is at 8.5 percent, down 0.4 of a percentage point over the month; unemployment level is at 540,000, down 22,000 from October 2009.

### **Job Facts**

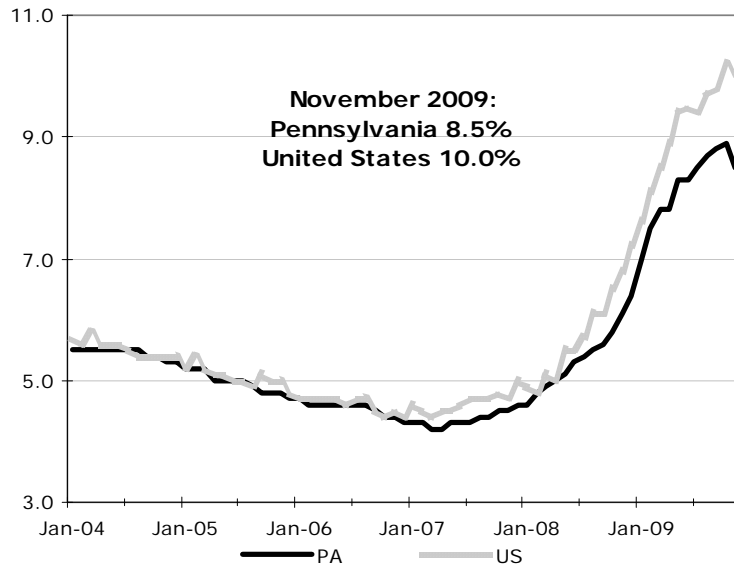
#### **United States:**

- Nonfarm jobs at 131 million in November, down 11,000 over the month; the goods-producing and service-providing domains decreased by 69,000 and rose by 58,000 over the month, respectively.
- Education & Health Services Super Sector gained 40,000 jobs in November; Temporary Help Services within Professional & Business Services rose by 52,000 over the month.

#### **Pennsylvania:**

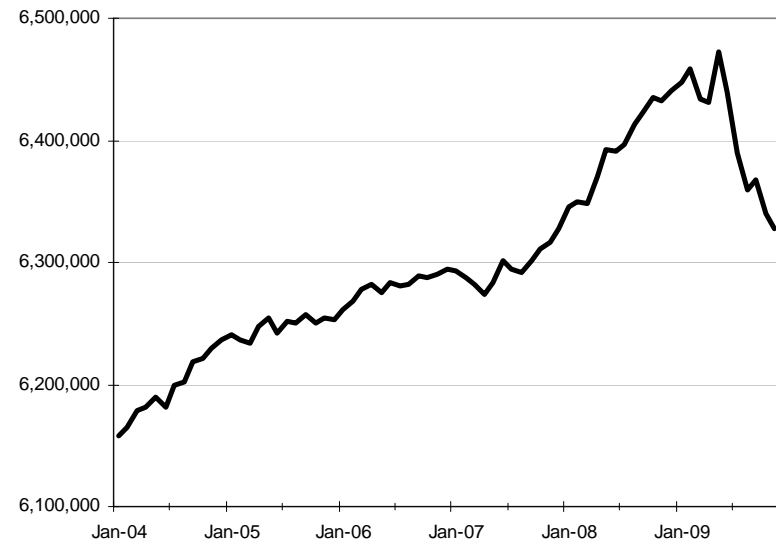
- Pennsylvania nonfarm jobs at 5.61 million in November, down over the month by 10,200; the goods-producing domain increased by 600, while the service-providing domain decreased by 10,800.
- Education & Health Services Super Sector gained 3,400 jobs in November 2009.

## Unemployment Rates: Pennsylvania compared to the United States, seasonally adjusted data, in percent



- Pennsylvania unemployment rate decreased to 8.5 percent in November, but remained above year-ago levels by 2.4 percentage points.
- US unemployment rate decreased to 10.0 percent in November, but was still 3.2 percentage points above November 2008's 6.8 percent.

## Labor Force, seasonally adjusted data



- Pennsylvania's labor force decreased by 12,000 over the month to 6.33 million, with an over-the-year loss of 105,000.
- On a percentage basis, this is an over-the-month decrease of 0.2 percent, and an over-the-year decrease of 1.6 percent.

## Regional Unemployment Rate Comparison (UR) seasonally adjusted data

	<u>12/2007 UR</u>	<u>10/2009 UR</u>	<u>11/2009 UR</u>
Maryland	3.6	7.3	7.4
New Jersey	4.5	9.7	9.7
New York	4.6	9.0	8.6
Ohio	5.8	10.5	10.6
Pennsylvania	4.6	8.9	8.5

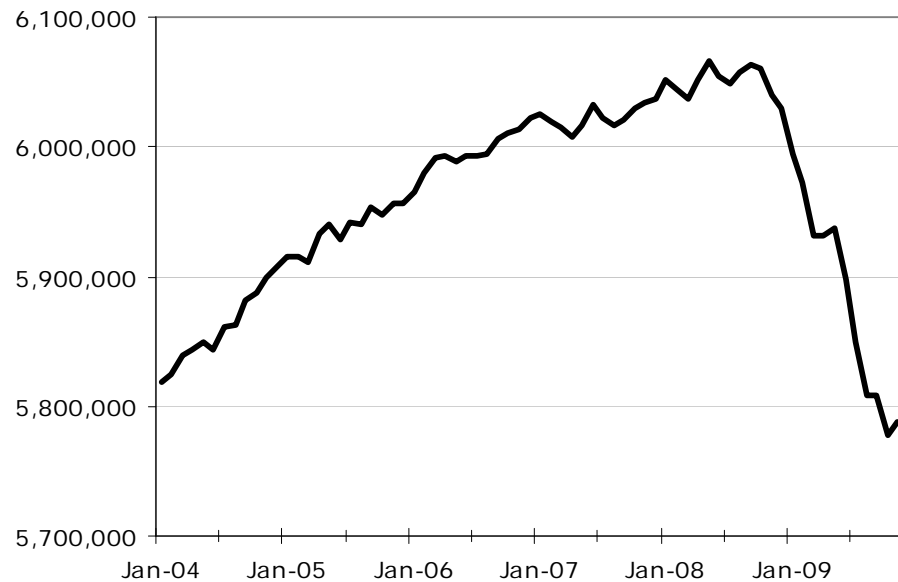
- Among Pennsylvania's neighboring states, since the beginning of the recession, New Jersey has shown the largest unemployment rate increase of 5.2 percent.
- Pennsylvania's rate increased 3.9 percent since the beginning of the recession.

## Highest and Lowest Unemployment Rate by County seasonally adjusted data

<u>Highest</u>	<u>UR Rate</u>	<u>Lowest</u>	<u>UR Rate</u>
Cameron County	17.4	Centre County	6.1
Fulton County	14.8	Montour County	6.3
Elk County	12.7	Chester County	6.7
Mercer County	12.3	Cumberland County	7.2
Forest County	12.2	Montgomery County	7.2

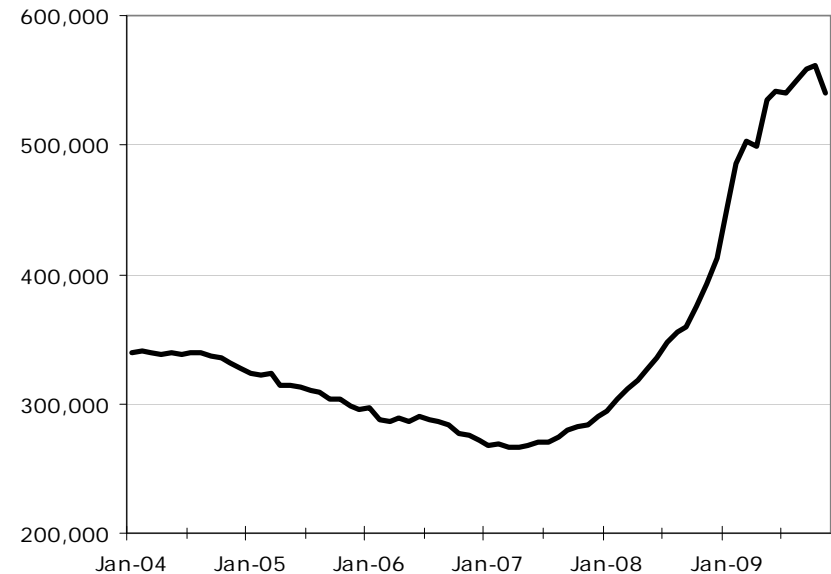
- The data above is from October 2009.
- Cameron County has the highest unemployment rate of 17.4 percent, and Centre County has the lowest rate with 6.1 percent.
- December 2009 data will be available in the January 2010 Economy at a Glance report, due to be released on January 22<sup>nd</sup>.

## Resident Employment, seasonally adjusted data



- Pennsylvania employment increased in November to 5.79 million. Over the year, the net change was a loss of 252,000.
- This is a 4.2 percent loss over the year.

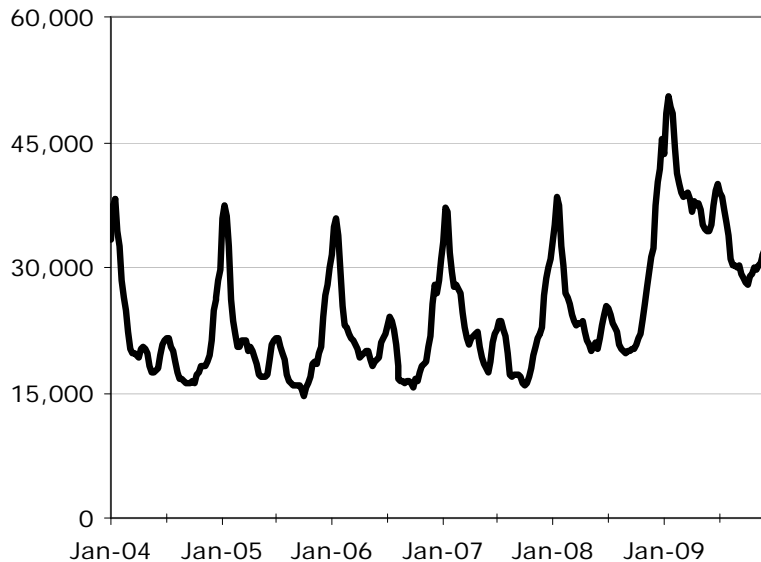
## Resident Unemployment, seasonally adjusted data



- The number of unemployed declined by 22,000 in November 2009 to 540,000, but was still above year-ago levels by 147,000.
- The change over the month was a loss, 3.9 percent; over the year, the measure rose 37.4 percent.

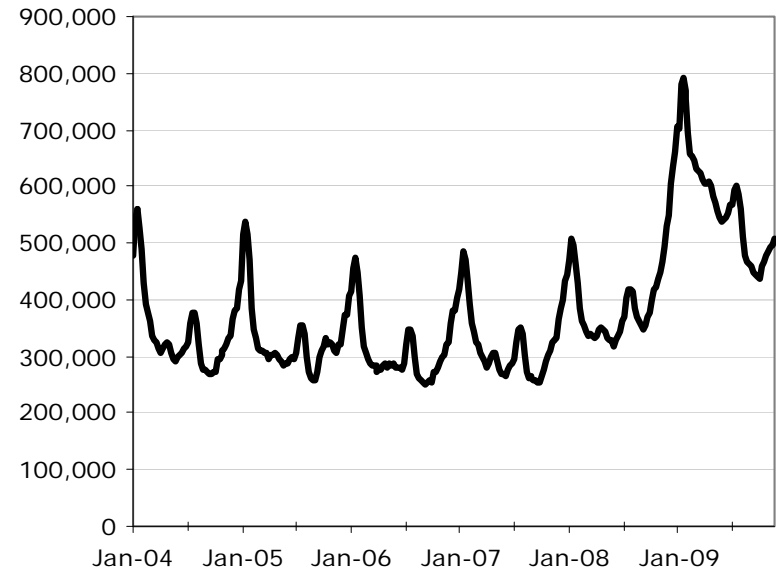
## Initial claims for Unemployment Compensation Benefits, 4-week moving average, not seasonally adjusted data

### Pennsylvania Initial Claims



- Pennsylvania Initial Claims for Unemployment Compensation Benefits rose by 144 over the year, to reach 32,000 in November 2009.

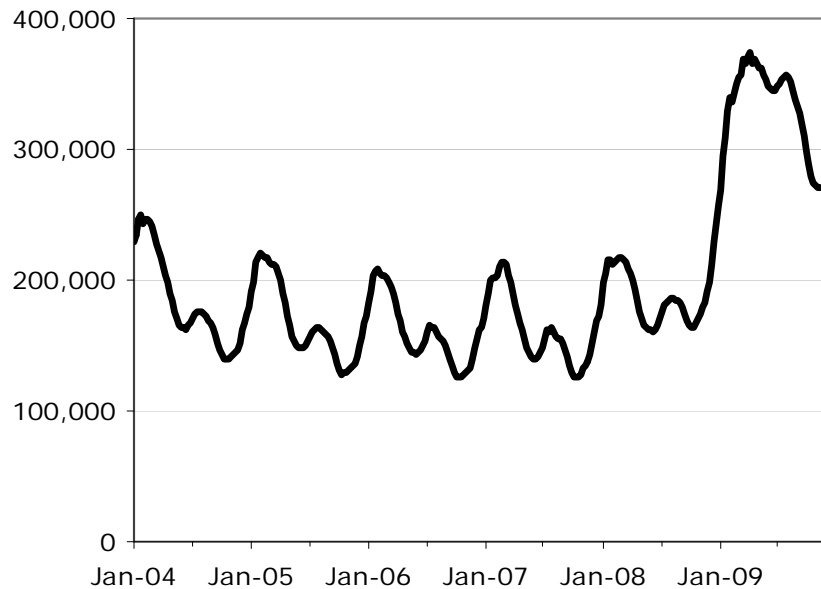
### United States Initial Claims



- US initial claims fell by 25,000 over the year, to total 507,000 in November.

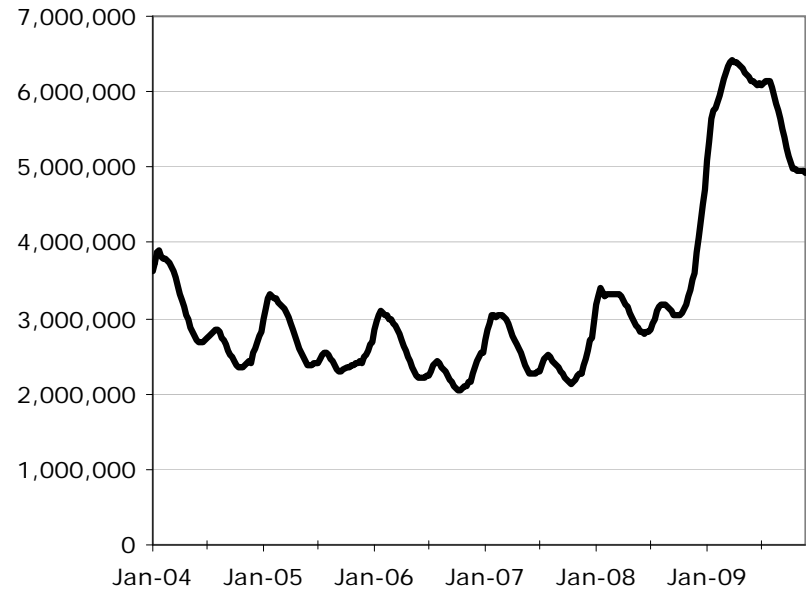
**Continued Weeks Claimed for Unemployment Compensation Benefits,  
4-week moving average, not seasonally adjusted data**

**Pennsylvania Continued Weeks Claimed**



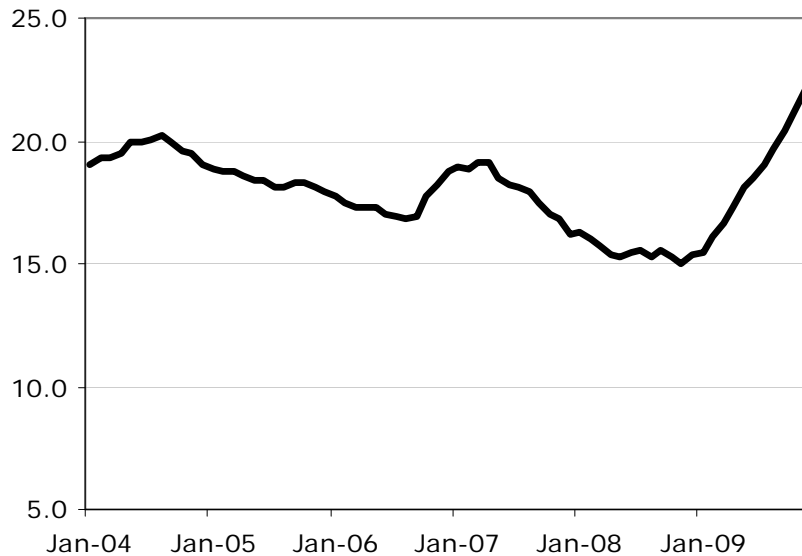
- Pennsylvania Continued Weeks Claimed for Unemployment Compensation Benefits rose by 70,000 over the year, to reach 268,000 in November 2009.

**United States Continued Weeks Claimed**



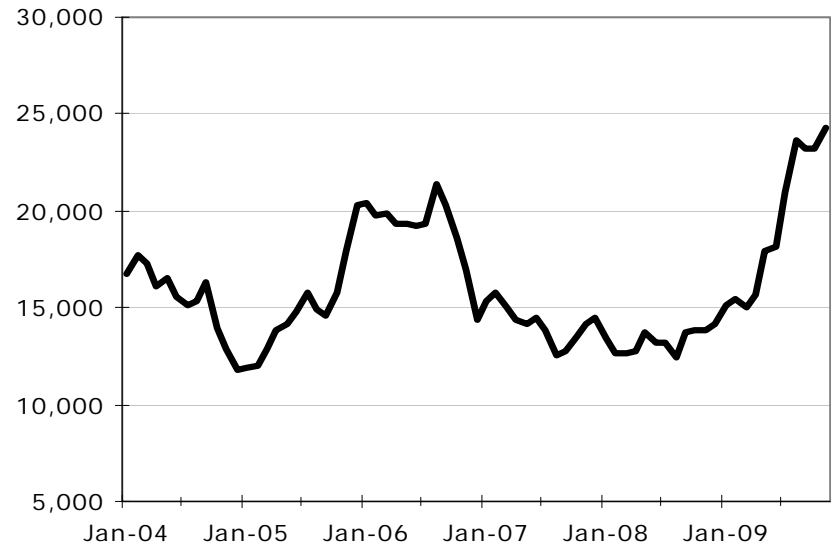
- Increasing by 1.3 million over the year, US continued weeks claimed totaled 4.93 million in November 2009.

### Average Duration of Unemployment, 12-month moving average, not seasonally adjusted data, in weeks



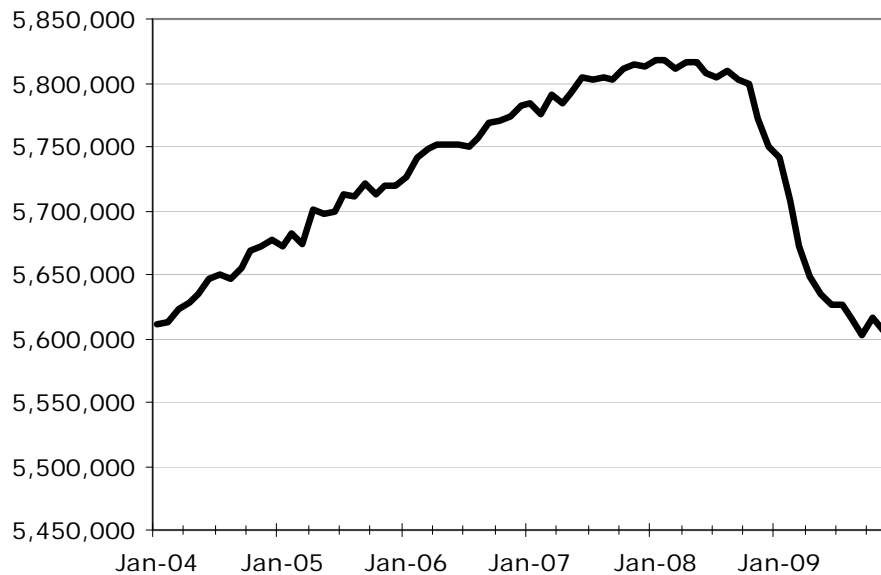
- Average duration of unemployment totaled 22.1 weeks in November, an over-the-year increase of 7.1 weeks.

### Discouraged Workers, 12-month moving average, not seasonally adjusted data



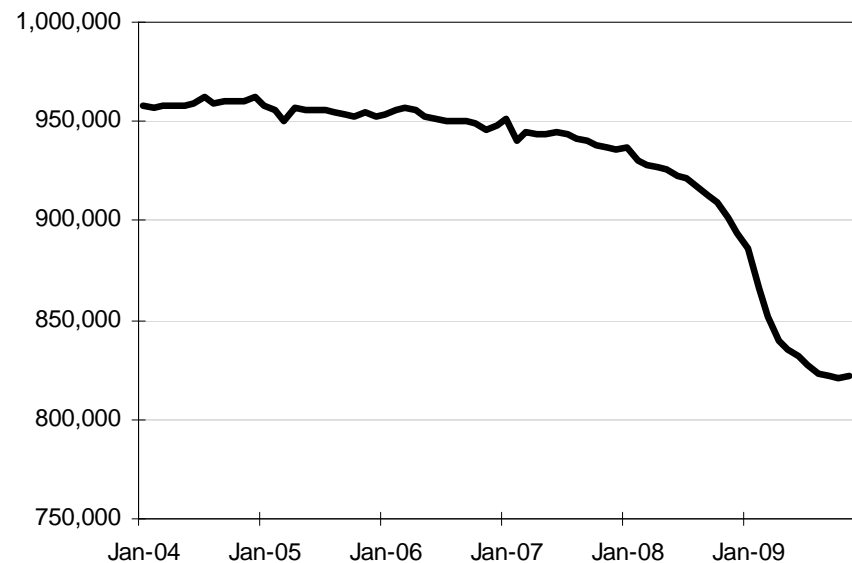
- Discouraged worker levels in Pennsylvania have increased by 10,500 over the year, to 24,200.

### Total Nonfarm Jobs, seasonally adjusted data



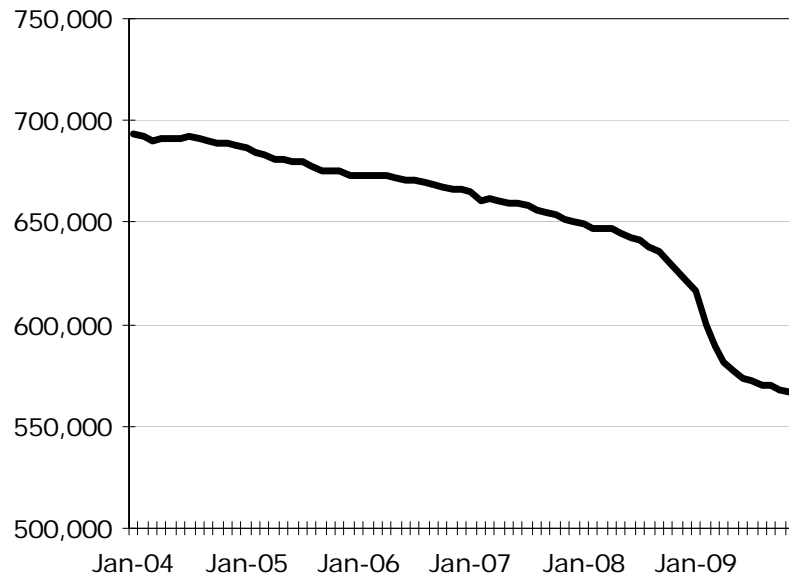
- Nonfarm jobs rose to 5,605,000 in November, a loss of 10,000 jobs; over the year, nonfarm jobs were down 167,000.
- This represents a monthly loss from October of 0.2 percent, and a yearly loss since last November of 2.9 percent.

### Goods Producing Jobs, seasonally adjusted data



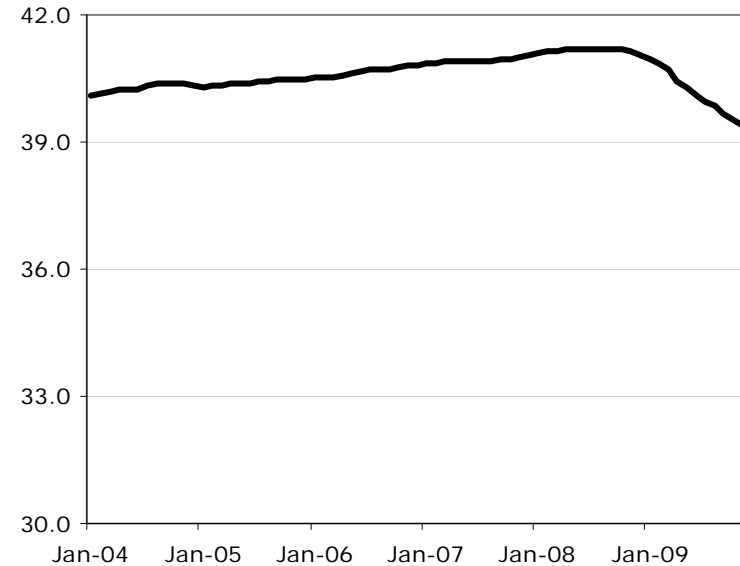
- Goods producing-jobs rose to 822,000 in November, a gain of 600 jobs; since last November, losses totaled 81,200 jobs.
- In terms of percentage changes, the October-to-November change was an increase of 0.1 percent; over the year, change was a drop of 9.0 percent.

### Manufacturing Jobs, seasonally adjusted data



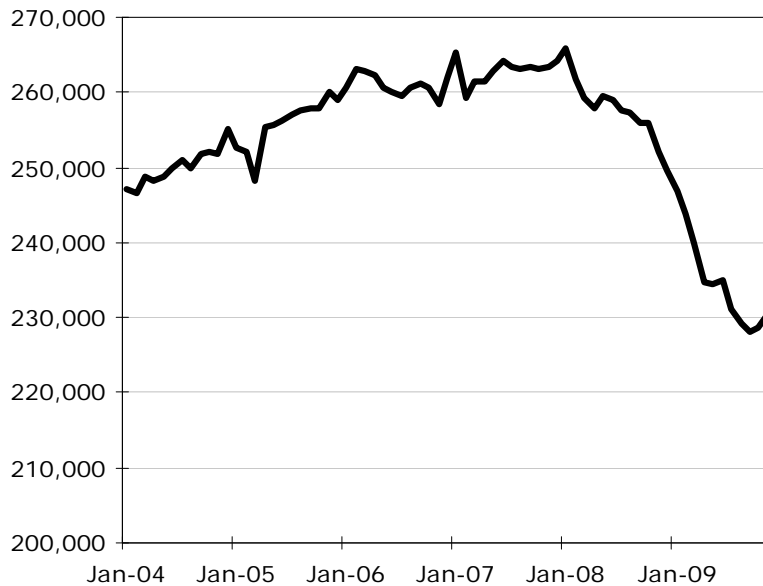
- Pennsylvania manufacturers' payrolls declined by 1,300 in November to 567,000 jobs, an over-the-year loss of 65,000.
- On a percentage basis, loss was 0.2 percent since October, and 10.3 percent since November 2008.

### Manufacturing Average Hours, not seasonally adjusted data, in hours



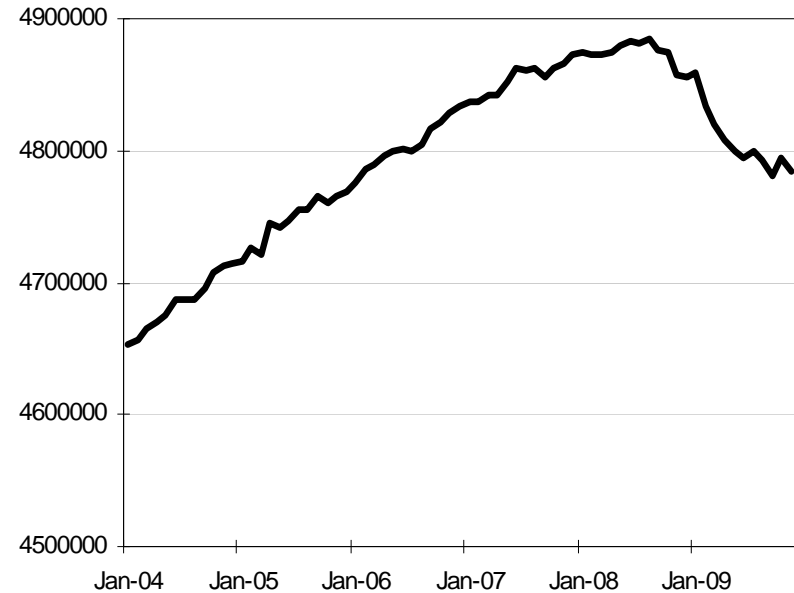
- Manufacturing average hours decreased by 1.8 hours since November 2008, to 39.4.

### Construction Jobs, seasonally adjusted data



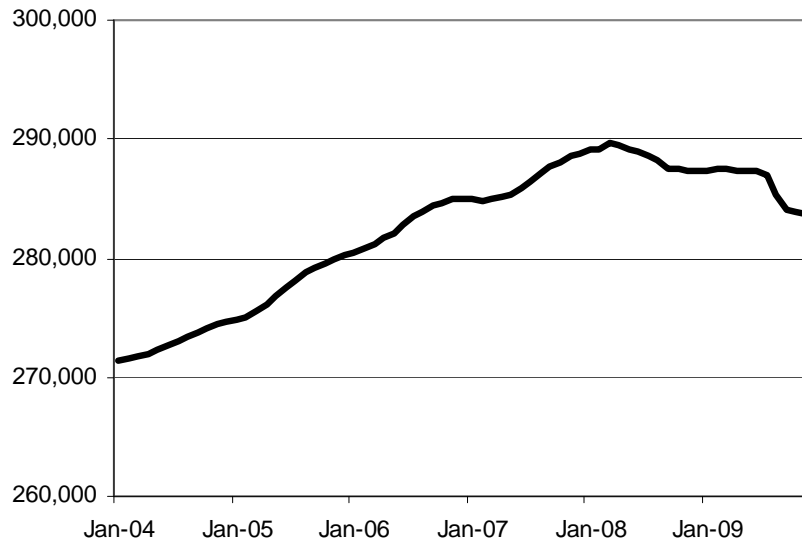
- Construction jobs increased by 1,900 in November to 231,000 jobs. Construction payrolls were down over the year, however, by 17,400.
- This is an over-the-month gain of 0.8 percent and an over-the-year loss of 7.0 percent.

### Service Providing Jobs, seasonally adjusted data



- Service-providing jobs fell to 4.78 million in November, an over the month loss of 11,000 jobs; since last November, losses totaled 86,000 jobs.
- This represents an decrease of 0.2 percent over the month and 1.8 percent decrease over the year.

### Number of Employers, 6-month moving average, not seasonally adjusted data



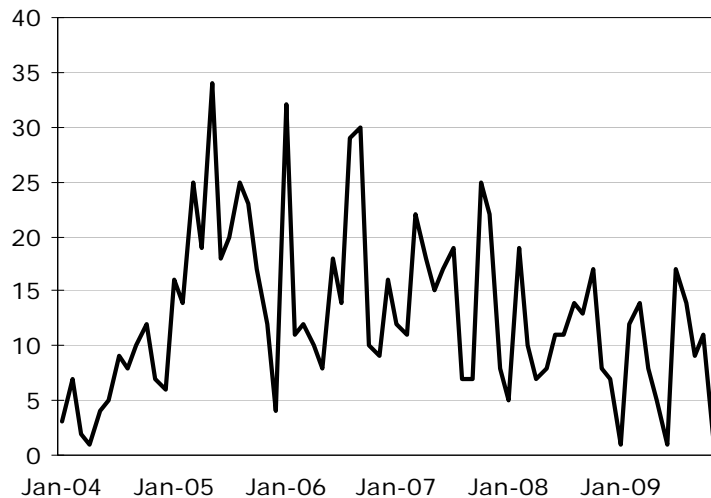
- The number of employers was 284,000 in November, a decrease of 1.3 percent since last November.

### Employer Registrations 12-month moving average, not seasonally adjusted data

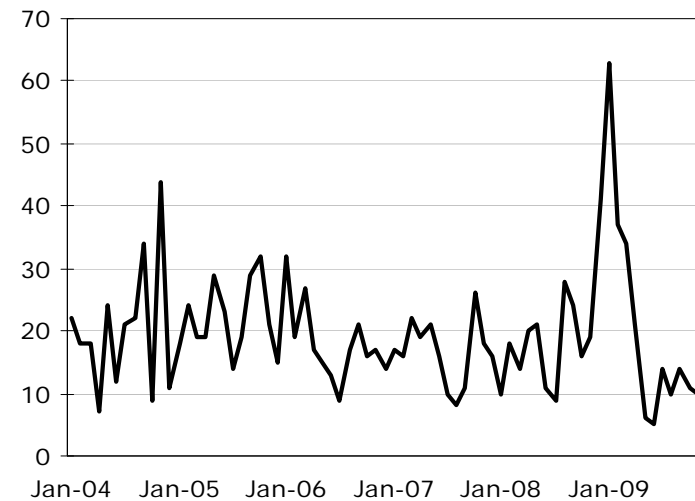


- The number of new employer registrations in November was 2,700, an over-the-year drop of 7.3 percent.

## Significant Employer Activity: Openings and Expansions



## Significant Employer Activity: Closings and Reductions

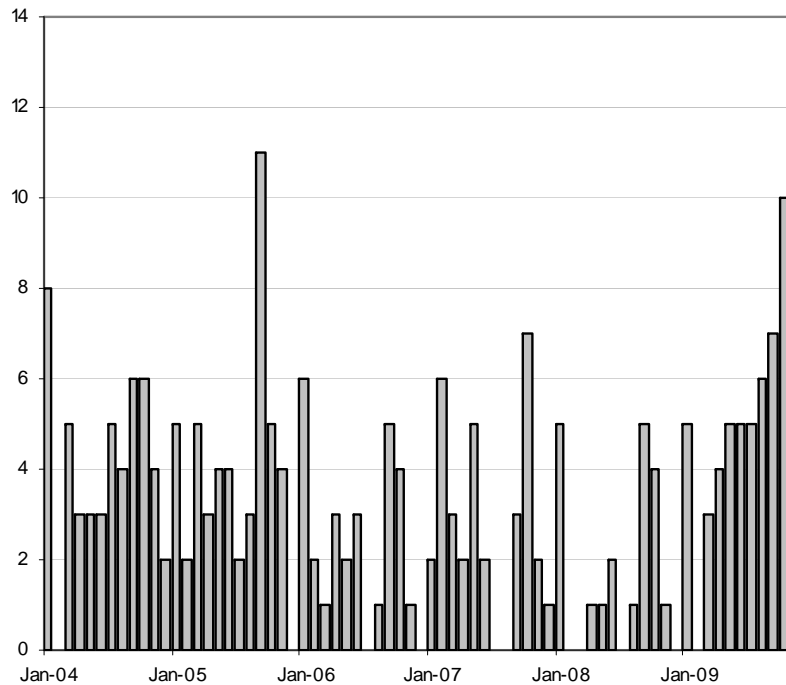


Note: Events are recorded in the months in which the data became public, not necessarily the month in which the event took place. **Data reflects only those events which have been released by employers to the media.**

- There was 1 reported openings in November 2009. This openings affected 25 workers.

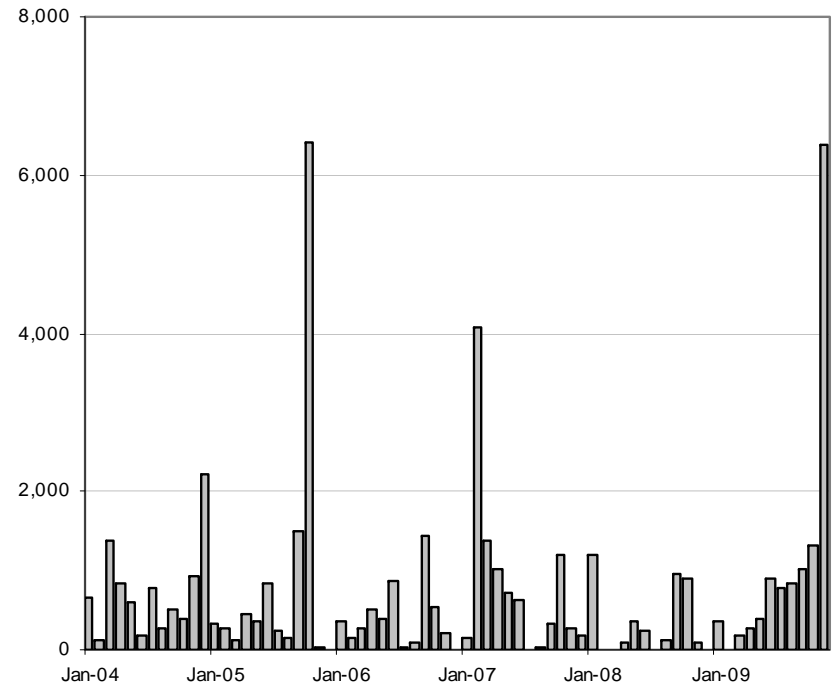
- There were 10 reported closings over the month, affecting 700 workers.

## Work Stoppages per Month



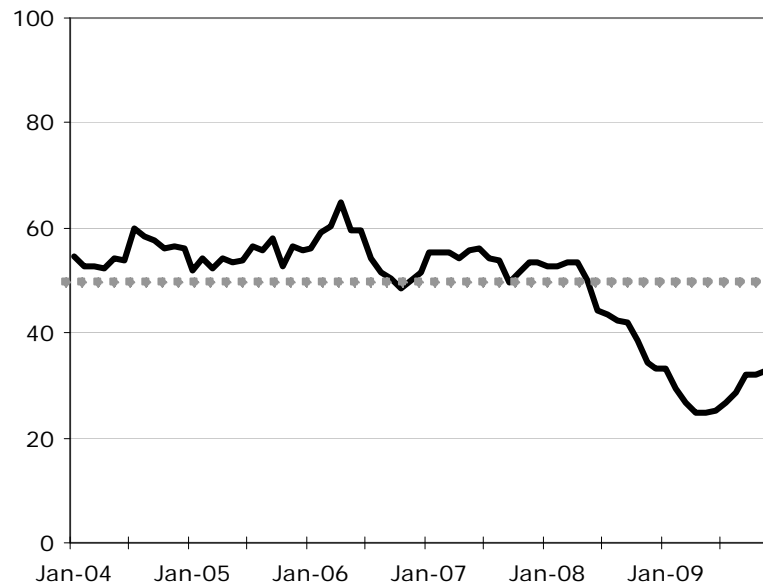
- In November, 12 work stoppages were reported.
- The cumulative total of work stoppages for 2009 so far is 62.

## Number of Employees Impacted by Work Stoppages, per Month



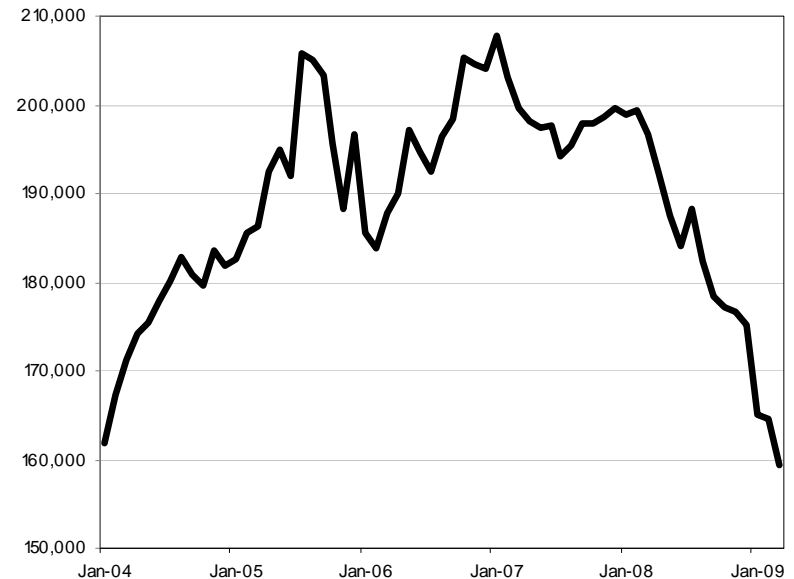
- These work stoppages affected 6,400 workers in November.
- Altogether, 12,400 workers have been affected by work stoppages in 2009.

## Dispersion Index, 6-month moving average



- The dispersion index increased to 32.9 in November 2009, continuing a trend seen for several consecutive months this year.
- A consistent return to levels above 50 would indicate a return to economic expansion, as determined by the number of nonfarm jobs.

## Total New Hires Reported to Pennsylvania, 6-month moving average, seasonally adjusted data



- Pennsylvania new hires dropped by 3.1 percent in March 2009 (the latest available data) to 159,000.
- The new hires count dropped 19.0 percent over the year (from 197,000 in March 2008).

# **Pennsylvania's Economy at a Glance**

***Next edition to be issued:  
January 22, 2010***

***(To obtain a copy of this presentation, contact the  
Center for Workforce Information & Analysis at 1-877-493-3282).***