

Chester County Workforce Investment Area (WIA)

Agriculture and Food Production (AFP)

Industries Showing...*

...Employment Growth

Supermarkets and other grocery stores
Mushroom production
Veterinary services
Convenience stores
Commercial bakeries

... Employment Decline

Other food crops grown under cover
Other snack food manufacturing
Other grocery product merchant wholesalers
Meat processed from carcasses
Fertilizer, mixing only, manufacturing

Notes:

*Employment growth and decline determined from 1995 to 2006.

**This graph displays the percent change of each year compared to the base year of 1995.

***Based on occupations from the statewide High Priority Occupations list effective July 1, 2007 through June 30, 2008.



CENTER FOR
WORKFORCE INFORMATION
AND ANALYSIS

Department of Labor & Industry

www.paworkstats.state.pa.us

Email: workforceinfo@state.pa.us

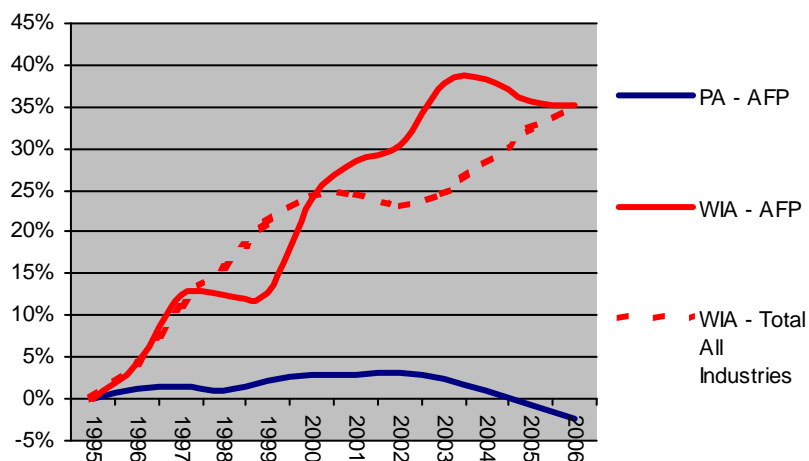
Toll-free: 877-493-3282

December 2007

AFP Cluster Statistics

WIA Cluster Employment (2006)	16,127
Percent of Total Area Employment (2006)	6.86%
Employment Growth (1995-2006)	4,200
Employment Percent Growth (1995-2006)	35.21%
Average Annual Wage (2006)	\$29,085
Average Size of Employer Units (2006)	26.5

Percent Change in Employment from 1995**



Select High Priority Occupations***

Sales Representatives
Truck Drivers, Heavy & Tractor-Trailer
General & Operations Managers
Industrial Truck & Tractor Operators
Truck Drivers, Light or Delivery Services
Food Batchmakers
Driver/Sales Workers
Butchers & Meat Cutters
Packaging & Filling Machine Operators/Tenders
Veterinary Technologists & Technicians

Chester County Workforce Investment Area (WIA)

Agriculture and Food Production - Food Processing (AFP-FP)

Industries Showing...*

...Employment Growth

Commercial bakeries
Other animal food manufacturing
Retail bakeries
Ice manufacturing
Wineries

... Employment Decline

Other snack food manufacturing
Meat processed from carcasses
Fluid milk manufacturing
Other tobacco product manufacturing
Fruit and vegetable canning

Notes:

*Employment growth and decline determined from 1995 to 2006.

**This graph displays the percent change of each year compared to the base year of 1995.

***Top occupations selected by percent of employment and number of openings.



CENTER FOR
WORKFORCE INFORMATION
AND ANALYSIS

Department of Labor & Industry

www.paworkstats.state.pa.us

Email: workforceinfo@state.pa.us

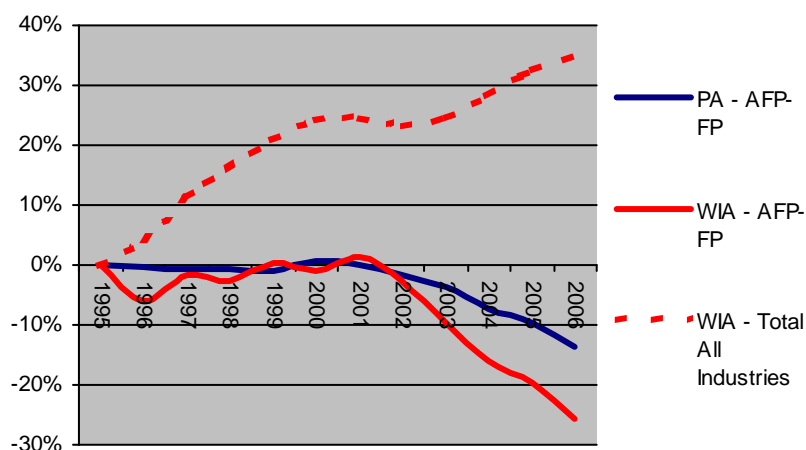
Toll-free: 877-493-3282

December 2007

AFP-FP Cluster Statistics

WIA Cluster Employment (2006)	1,598
Percent of Total Area Employment (2006)	0.68%
Employment Growth (1995-2006)	-553
Employment Percent Growth (1995-2006)	-25.71%
Average Annual Wage (2006)	\$41,913
Average Size of Employer Units (2006)	34.7

Percent Change in Employment from 1995**



Select Top Occupations***

Packers & Packagers, Hand
Laborers & Freight, Stock & Material Movers
Bakers
Food Batchmakers
Helpers--Production Workers
Packaging & Filling Machine Operators/Tenders
Meat, Poultry & Fish Cutters & Trimmers
Truck Drivers, Heavy & Tractor-Trailer
Industrial Truck & Tractor Operators
Retail Salespersons

Chester County Workforce Investment Area (WIA)

Advanced Materials and Diversified Manufacturing (AMDM)

Industries Showing...*

...Employment Growth

Software reproducing
 Telephone apparatus manufacturing
 Electric housewares and household fan mfg.
 Commercial lithographic printing
 Commercial flexographic printing

... Employment Decline

Iron and steel mills
 Electronic computer manufacturing
 Manifold business forms printing
 Industrial gas manufacturing
 All other plastics product manufacturing

Notes:

*Employment growth and decline determined from 1995 to 2006.

**This graph displays the percent change of each year compared to the base year of 1995.

***Based on occupations from the statewide High Priority Occupations list effective July 1, 2007 through June 30, 2008.



CENTER FOR
WORKFORCE INFORMATION
 AND ANALYSIS

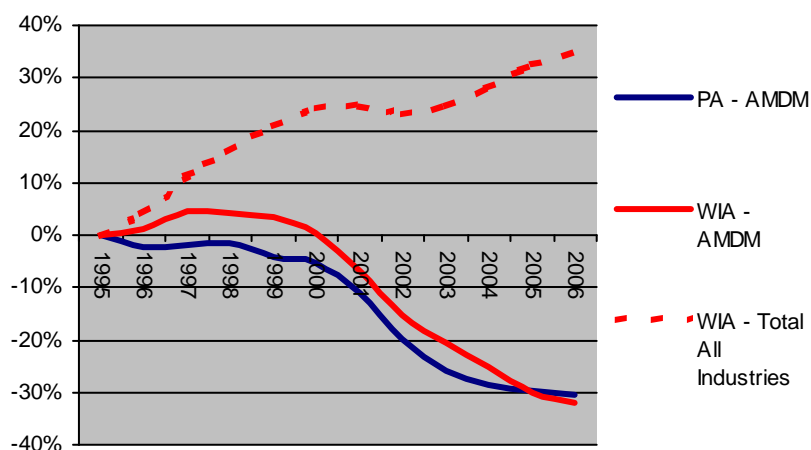
Department of Labor & Industry
www.paworkstats.state.pa.us
 Email: workforceinfo@state.pa.us
 Toll-free: 877-493-3282

December 2007

AMDM Cluster Statistics

WIA Cluster Employment (2006)	13,084
Percent of Total Area Employment (2006)	5.57%
Employment Growth (1995-2006)	-6,183
Employment Percent Growth (1995-2006)	-32.09%
Average Annual Wage (2006)	\$67,363
Average Size of Employer Units (2006)	30.6

Percent Change in Employment from 1995**



Select High Priority Occupations***

Team Assemblers
 Supervisors - Production & Operating Workers
 Machinists
 Laborers & Freight, Stock & Material Movers
 Welders, Cutters, Solderers & Brazers
 Maintenance & Repair Workers, General
 General & Operations Managers
 Sales Representatives
 Industrial Truck & Tractor Operators
 Inspectors, Testers, Sorters, Samplers & Weighers

Chester County Workforce Investment Area (WIA)

Advanced Materials and Diversified Manufacturing - Chemical, Rubber and Plastics (AMDM-CRP)

Industries Showing...*

...Employment Growth

Polish and other sanitation good mfg.
Nonpackaging plastics film and sheet mfg.
Paint and coating manufacturing
Urethane and other foam product manufacturin
Unlaminated plastics profile shape mfg.

... Employment Decline

Industrial gas manufacturing
All other plastics product manufacturing
Laminated plastics plate, sheet, and shapes
All other basic inorganic chemical mfg.
Plastics pipe and pipe fitting manufacturing

Notes:

*Employment growth and decline determined from 1995 to 2006.

**This graph displays the percent change of each year compared to the base year of 1995.

***Top occupations selected by percent of employment and number of openings.



CENTER FOR
WORKFORCE INFORMATION
AND ANALYSIS

Department of Labor & Industry

www.paworkstats.state.pa.us

Email: workforceinfo@state.pa.us

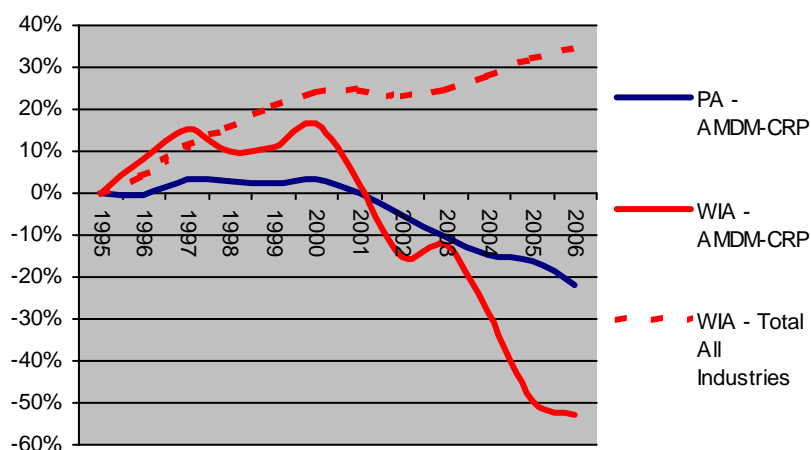
Toll-free: 877-493-3282

December 2007

AMDM-CRP Cluster Statistics

WIA Cluster Employment (2006)	1,411
Percent of Total Area Employment (2006)	0.60%
Employment Growth (1995-2006)	-1,570
Employment Percent Growth (1995-2006)	-52.67%
Average Annual Wage (2006)	\$62,489
Average Size of Employer Units (2006)	28.2

Percent Change in Employment from 1995**



Select Top Occupations***

Team Assemblers
Packers & Packagers, Hand
Chemical Equipment Operators & Tenders
Maintenance & Repair Workers, General
Supervisors - Production & Operating Workers
Molding & Casting Machine Oprs, Metal & Plastic
Mixing & Blending Machine Setters/Operators/Tenders
Helpers--Production Workers
Laborers & Freight, Stock & Material Movers
Inspectors, Testers, Sorters, Samplers & Weighers

Chester County Workforce Investment Area (WIA)

Advanced Materials and Diversified Manufacturing - Electronics (AMDM-E)

Industries Showing...*

...Employment Growth

Software reproducing
Telephone apparatus manufacturing
Electric housewares and household fan mfg.
Miscellaneous electrical equipment mfg.
Search, detection, and navigation instruments

... Employment Decline

Electronic computer manufacturing
Printed circuit assembly manufacturing
Switchgear and switchboard apparatus mfg.
Broadcast and wireless communications equip.
Electronic resistor manufacturing

Notes:

*Employment growth and decline determined from 1995 to 2006.

**This graph displays the percent change of each year compared to the base year of 1995.

***Top occupations selected by percent of employment and number of openings.



CENTER FOR
WORKFORCE INFORMATION
AND ANALYSIS

Department of Labor & Industry

www.paworkstats.state.pa.us

Email: workforceinfo@state.pa.us

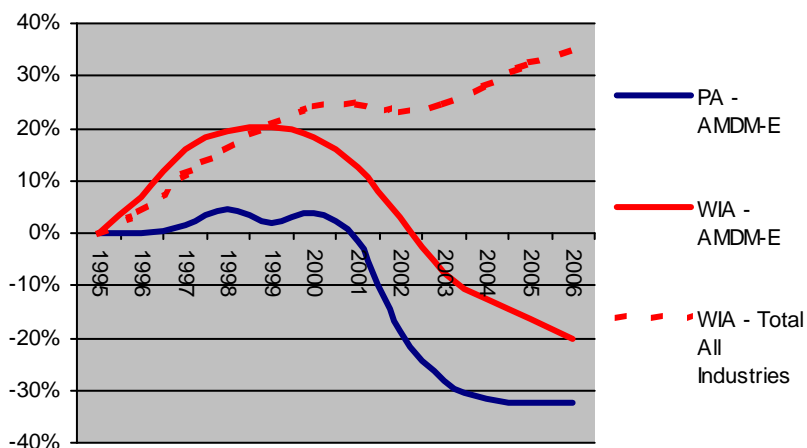
Toll-free: 877-493-3282

December 2007

AMDM-E Cluster Statistics

WIA Cluster Employment (2006)	3,538
Percent of Total Area Employment (2006)	1.51%
Employment Growth (1995-2006)	-886
Employment Percent Growth (1995-2006)	-20.03%
Average Annual Wage (2006)	\$78,174
Average Size of Employer Units (2006)	53.6

Percent Change in Employment from 1995**



Select Top Occupations***

Electrical & Electronic Equipment Assemblers
Team Assemblers
Electrical & Electronic Engineering Technicians
Supervisors - Production & Operating Workers
Electrical Engineers
General & Operations Managers
Inspectors, Testers, Sorters, Samplers & Weighers
Laborers & Freight, Stock & Material Movers
Customer Service Representatives
Maintenance & Repair Workers, General

Chester County Workforce Investment Area (WIA)

Advanced Materials and Diversified Manufacturing - Metals and Metal Fabrication (AMDM-MMF)

Industries Showing...*

...Employment Growth

Miscellaneous fabricated metal product mfg.
Industrial valve manufacturing
Sheet metal work manufacturing
Saw blade and handsaw manufacturing
Metal coating and nonprecious engraving

... Employment Decline

Iron and steel mills
Cutlery and flatware, except precious, mfg.
Hand and edge tool manufacturing
Bolt, nut, screw, rivet, and washer mfg.
Cutting tool and machine tool accessory mfg.

Notes:

*Employment growth and decline determined from 1995 to 2006.

**This graph displays the percent change of each year compared to the base year of 1995.

***Top occupations selected by percent of employment and number of openings.



CENTER FOR
WORKFORCE INFORMATION
AND ANALYSIS

Department of Labor & Industry

www.paworkstats.state.pa.us

Email: workforceinfo@state.pa.us

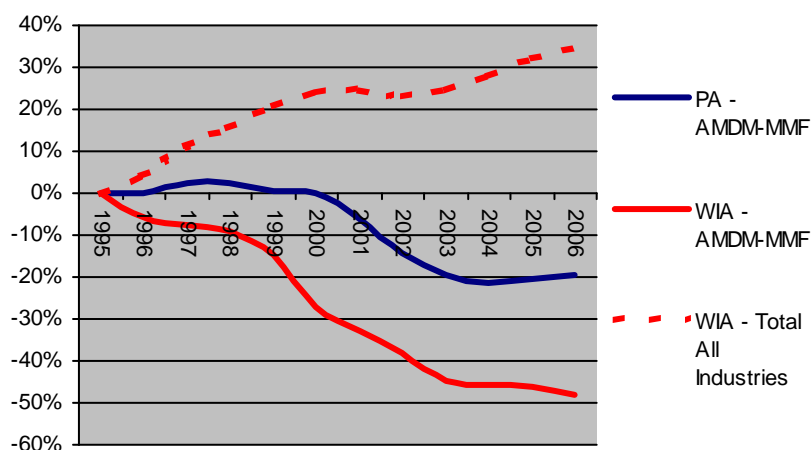
Toll-free: 877-493-3282

December 2007

AMDM-MMF Cluster Statistics

WIA Cluster Employment (2006)	2,888
Percent of Total Area Employment (2006)	1.23%
Employment Growth (1995-2006)	-2,679
Employment Percent Growth (1995-2006)	-48.12%
Average Annual Wage (2006)	\$59,376
Average Size of Employer Units (2006)	30.4

Percent Change in Employment from 1995**



Select Top Occupations***

Machinists
Team Assemblers
Supervisors - Production & Operating Workers
Laborers & Freight, Stock & Material Movers
Welders, Cutters, Solderers & Brazers
Maintenance & Repair Workers, General
General & Operations Managers
Computer-Controlled Machine Tool Operators, Metal & Plastic
Helpers--Production Workers
Industrial Truck & Tractor Operators

Chester County Workforce Investment Area (WIA)

Advanced Materials and Diversified Manufacturing - Printing (AMDM-P)

Industries Showing...*

...Employment Growth

Commercial lithographic printing
 Commercial flexographic printing
 Digital printing
 Commercial gravure printing
 Other commercial printing

... Employment Decline

Manifold business forms printing
 Quick printing

Notes:

*Employment growth and decline determined from 1995 to 2006.

**This graph displays the percent change of each year compared to the base year of 1995.

***Based on occupations from the statewide High Priority Occupations list effective July 1, 2007 through June 30, 2008.



CENTER FOR
WORKFORCE INFORMATION
 AND ANALYSIS

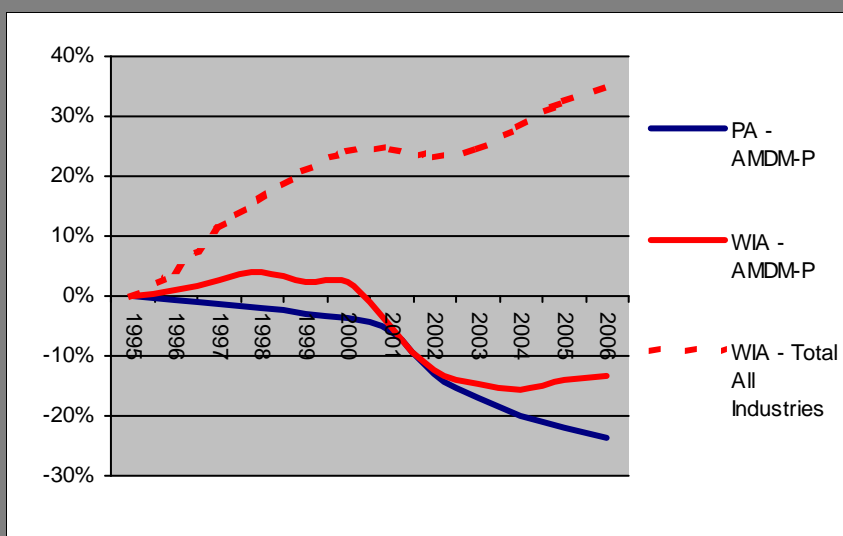
Department of Labor & Industry
www.paworkstats.state.pa.us
 Email: workforceinfo@state.pa.us
 Toll-free: 877-493-3282

December 2007

AMDM-P Cluster Statistics

WIA Cluster Employment (2006)	1,674
Percent of Total Area Employment (2006)	0.71%
Employment Growth (1995-2006)	-255
Employment Percent Growth (1995-2006)	-13.22%
Average Annual Wage (2006)	\$52,919
Average Size of Employer Units (2006)	23.6

Percent Change in Employment from 1995**



Select High Priority Occupations***

Printing Machine Operators
 Sales Representatives
 Prepress Technicians & Workers
 Customer Service Representatives
 Job Printers
 Desktop Publishers
 General & Operations Managers
 Supervisors - Production & Operating Workers
 Graphic Designers

Chester County Workforce Investment Area (WIA)

Advanced Materials and Diversified Manufacturing - Vehicle and Vehicle Equipment (AMDM-VVE)

Industries Showing...*

...Employment Growth

Railroad rolling stock manufacturing
All other motor vehicle parts manufacturing
Motor vehicle body manufacturing

... Employment Decline

Aircraft manufacturing
Truck trailer manufacturing
All other transportation equipment mfg.
Other motor vehicle electric equipment mfg.

Notes:

*Employment growth and decline determined from 1995 to 2006.

**This graph displays the percent change of each year compared to the base year of 1995.

***Top occupations selected by percent of employment and number of openings.



CENTER FOR
WORKFORCE INFORMATION
AND ANALYSIS

Department of Labor & Industry

www.paworkstats.state.pa.us

Email: workforceinfo@state.pa.us

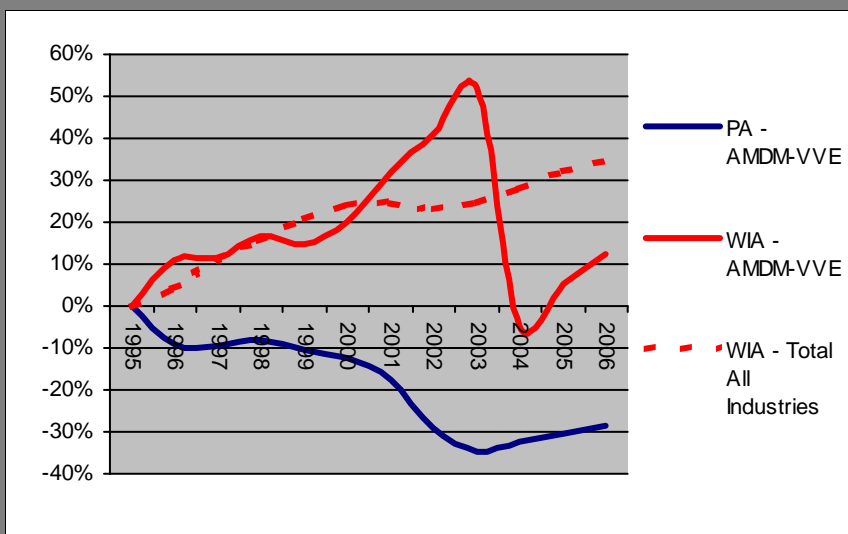
Toll-free: 877-493-3282

December 2007

AMDM-VVE Cluster Statistics

WIA Cluster Employment (2006)	692
Percent of Total Area Employment (2006)	0.29%
Employment Growth (1995-2006)	76
Employment Percent Growth (1995-2006)	12.34%
Average Annual Wage (2006)	\$63,793
Average Size of Employer Units (2006)	62.9

Percent Change in Employment from 1995**



Select Top Occupations***

Team Assemblers
Welders, Cutters, Solderers & Brazers
Machinists
Maintenance & Repair Workers, General
Automotive Service Technicians & Mechanics
Supervisors - Production & Operating Workers
Stock Clerks & Order Fillers
Aircraft Structure, Surfaces, Rigging & Systems Assemblers
Helpers--Production Workers
Laborers & Freight, Stock & Material Movers

Chester County Workforce Investment Area (WIA)

Building and Construction (BC)

Industries Showing...*

...Employment Growth

Residential site preparation contractors
 Residential remodelers
 Residential plumbing and HVAC contractors
 New single-family general contractors
 Nonresidential electrical contractors

... Employment Decline

Ornamental and architectural metal work mfg.
 Industrial and commercial fan and blower mfg.
 Asphalt shingle and coating materials mfg.
 Construction equipment merchant wholesalers
 Custom architectural woodwork and millwork

Notes:

*Employment growth and decline determined from 1995 to 2006.

**This graph displays the percent change of each year compared to the base year of 1995.

***Based on occupations from the statewide High Priority Occupations list effective July 1, 2007 through June 30, 2008.



CENTER FOR
WORKFORCE INFORMATION
 AND ANALYSIS

Department of Labor & Industry

www.paworkstats.state.pa.us

Email: workforceinfo@state.pa.us

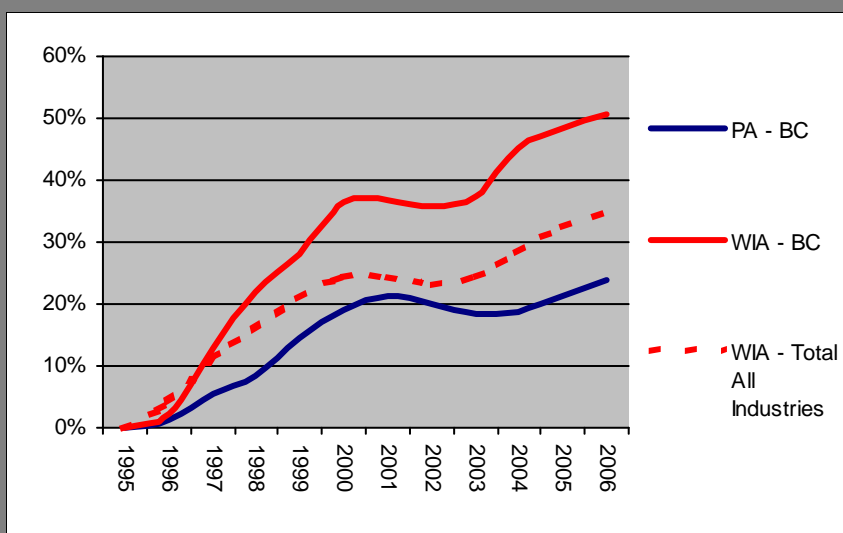
Toll-free: 877-493-3282

December 2007

BC Cluster Statistics

WIA Cluster Employment (2006)	14,731
Percent of Total Area Employment (2006)	6.27%
Employment Growth (1995-2006)	4,943
Employment Percent Growth (1995-2006)	50.50%
Average Annual Wage (2006)	\$52,395
Average Size of Employer Units (2006)	8.5

Percent Change in Employment from 1995**



Select High Priority Occupations***

Carpenters
 Electricians
 Plumbers, Pipefitters & Steamfitters
 Supervisors - Construction Trades & Extraction Workers
 Construction Laborers
 Operating Engineers
 General & Operations Managers
 Sales Representatives
 Laborers & Freight, Stock & Material Movers
 Roofers

Chester County Workforce Investment Area (WIA)

Business and Financial Services (BFS)

Industries Showing...*

...Employment Growth

Open-end investment funds
 Managing offices
 Landscaping services
 Administrative management consulting services
 Temporary help services

... Employment Decline

Computer and office machine repair
 Other direct insurance carriers
 All other consumer goods rental
 Professional employer organizations
 Savings institutions

Notes:

*Employment growth and decline determined from 1995 to 2006.

**This graph displays the percent change of each year compared to the base year of 1995.

***Based on occupations from the statewide High Priority Occupations list effective July 1, 2007 through June 30, 2008.



CENTER FOR
WORKFORCE INFORMATION
 AND ANALYSIS

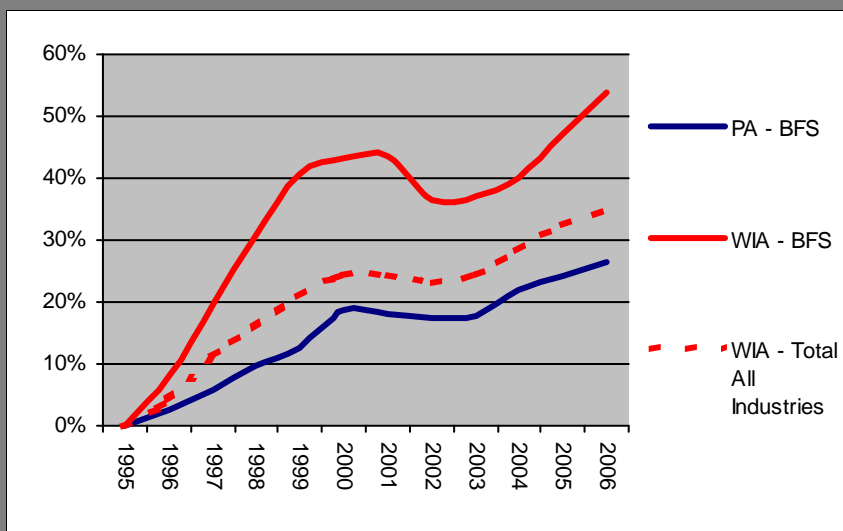
Department of Labor & Industry
www.paworkstats.state.pa.us
 Email: workforceinfo@state.pa.us
 Toll-free: 877-493-3282

December 2007

BFS Cluster Statistics

WIA Cluster Employment (2006)	46,716
Percent of Total Area Employment (2006)	19.88%
Employment Growth (1995-2006)	16,379
Employment Percent Growth (1995-2006)	53.99%
Average Annual Wage (2006)	\$73,581
Average Size of Employer Units (2006)	12.8

Percent Change in Employment from 1995**



Select High Priority Occupations***

Customer Service Representatives
 Office Clerks
 General & Operations Managers
 Accountants & Auditors
 Executive Secretaries & Administrative Assistants
 Secretaries
 Supervisors - Office & Administrative Support Workers
 Legal Secretaries
 Receptionists & Information Clerks
 Financial Managers

Chester County Workforce Investment Area (WIA)

Education (ED)

Industries Showing...*

...Employment Growth

Elementary and secondary schools
 Child day care services
 Colleges and universities
 School and employee bus transportation
 Educational support services

... Employment Decline

Libraries and archives
 Management training
 Automobile driving schools
 Historical sites

Notes:

*Employment growth and decline determined from 1995 to 2006.

**This graph displays the percent change of each year compared to the base year of 1995.

***Based on occupations from the statewide High Priority Occupations list effective July 1, 2007 through June 30, 2008.



CENTER FOR
WORKFORCE INFORMATION
 AND ANALYSIS

Department of Labor & Industry

www.paworkstats.state.pa.us

Email: workforceinfo@state.pa.us

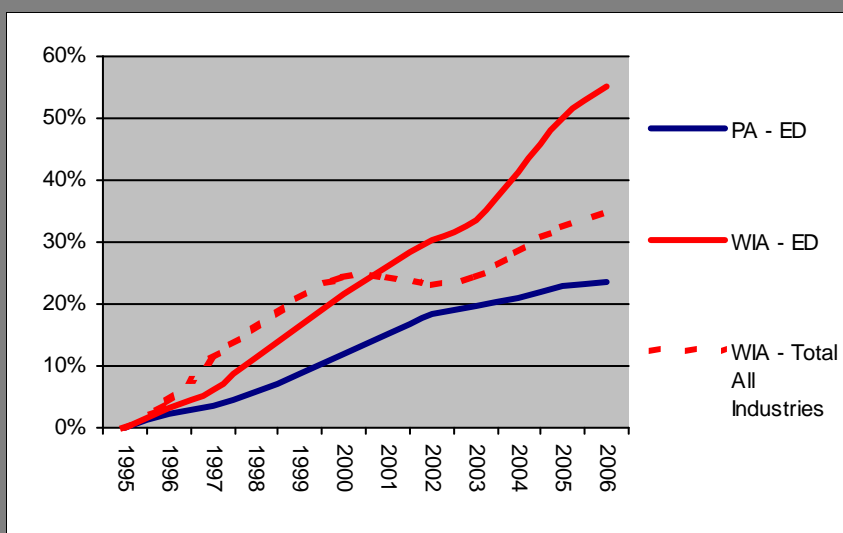
Toll-free: 877-493-3282

December 2007

ED Cluster Statistics

WIA Cluster Employment (2006)	21,176
Percent of Total Area Employment (2006)	9.01%
Employment Growth (1995-2006)	7,541
Employment Percent Growth (1995-2006)	55.31%
Average Annual Wage (2006)	\$39,259
Average Size of Employer Units (2006)	48.7

Percent Change in Employment from 1995**



Select High Priority Occupations***

Secondary School Teachers - Math, Science and Foreign
 Elementary School Teachers
 Teacher Assistants
 Middle School Teachers - Math, Science and Foreign Lang
 Child Care Workers
 Secretaries
 Executive Secretaries & Administrative Assistants
 Education Administrators, Elementary & Secondary School
 Educational, Vocational & School Counselors
 Education Administrators, Postsecondary

Chester County Workforce Investment Area (WIA)

Information and Communication Services (ICS)

Industries Showing...*

...Employment Growth

Custom computer programming services
 Computer systems design services
 Other computer related services
 Wired telecommunications carriers
 Data processing and related services

... Employment Decline

Engineering services
 Software publishers
 All other information services
 Newspaper publishers
 Book publishers

Notes:

*Employment growth and decline determined from 1995 to 2006.

**This graph displays the percent change of each year compared to the base year of 1995.

***Based on occupations from the statewide High Priority Occupations list effective July 1, 2007 through June 30, 2008.



CENTER FOR
WORKFORCE INFORMATION
 AND ANALYSIS

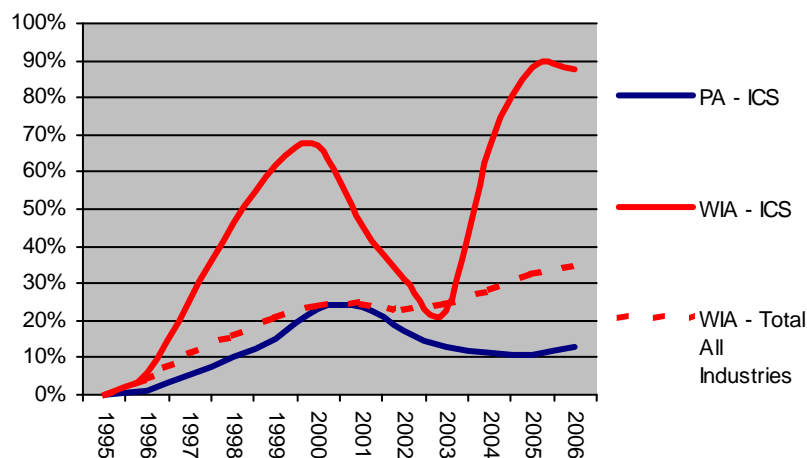
Department of Labor & Industry
www.paworkstats.state.pa.us
 Email: workforceinfo@state.pa.us
 Toll-free: 877-493-3282

December 2007

ICS Cluster Statistics

WIA Cluster Employment (2006)	17,306
Percent of Total Area Employment (2006)	7.36%
Employment Growth (1995-2006)	8,074
Employment Percent Growth (1995-2006)	87.46%
Average Annual Wage (2006)	\$87,343
Average Size of Employer Units (2006)	16.8

Percent Change in Employment from 1995**



Select High Priority Occupations***

Computer Software Engineers, Applications
 Customer Service Representatives
 Computer Programmers
 Computer Software Engineers, Systems Software
 Office Clerks
 Computer Systems Analysts
 Computer Support Specialists
 Telecommunications Line Installers & Repairers
 General & Operations Managers
 Network & Computer Systems Administrators

Chester County Workforce Investment Area (WIA)

Life Sciences (LS)

Industries Showing...*

...Employment Growth

Physical, engineering and biological research
 Continuing care retirement communities
 Other biological product manufacturing
 Offices of physicians, except mental health
 Druggists' goods merchant wholesalers

... Employment Decline

Direct health and medical insurance carriers
 Residential mental retardation facilities
 Pharmaceutical preparation manufacturing
 Home health care services
 Other residential care facilities

Notes:

*Employment growth and decline determined from 1995 to 2006.

**This graph displays the percent change of each year compared to the base year of 1995.

***Top occupations selected by percent of employment and number of openings.



CENTER FOR
WORKFORCE INFORMATION
 AND ANALYSIS

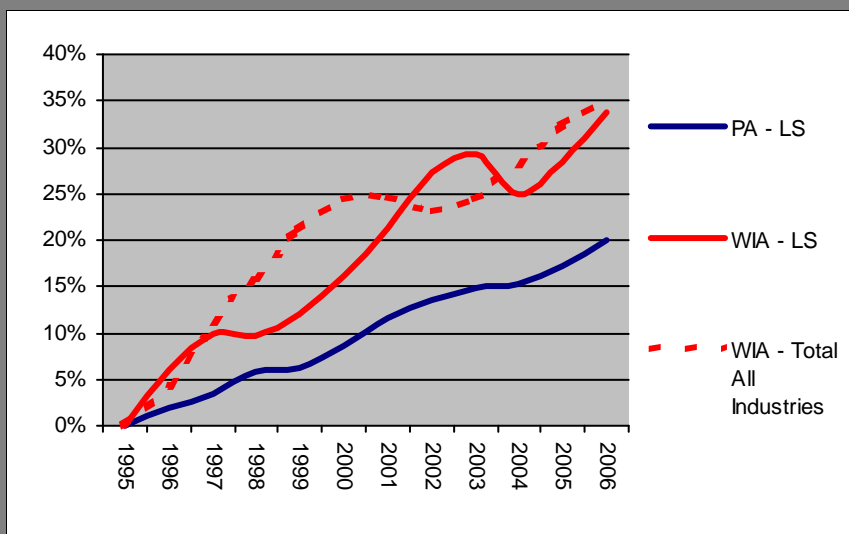
Department of Labor & Industry
www.paworkstats.state.pa.us
 Email: workforceinfo@state.pa.us
 Toll-free: 877-493-3282

December 2007

LS Cluster Statistics

WIA Cluster Employment (2006)	34,986
Percent of Total Area Employment (2006)	14.89%
Employment Growth (1995-2006)	8,839
Employment Percent Growth (1995-2006)	33.81%
Average Annual Wage (2006)	\$62,648
Average Size of Employer Units (2006)	24.9

Percent Change in Employment from 1995**



Select Top Occupations***

- Registered Nurses
- Nursing Aides, Orderlies & Attendants
- Licensed Practical & Licensed Vocational Nurses
- Home Health Aides
- Receptionists & Information Clerks
- Medical Assistants
- Personal & Home Care Aides
- Office Clerks
- Cashiers
- Emergency Medical Technicians & Paramedics

Chester County Workforce Investment Area (WIA)

Life Sciences - Bio-Medical (LS-BM)

Industries Showing...*

...Employment Growth

Physical, engineering and biological research
 Other biological product manufacturing
 Surgical and medical instrument manufacturing
 Surgical appliance and supplies manufacturing
 Social science and humanities research

... Employment Decline

Pharmaceutical preparation manufacturing
 Diagnostic imaging centers
 Dental laboratories

Notes:

*Employment growth and decline determined from 1995 to 2006.

**This graph displays the percent change of each year compared to the base year of 1995.

***Based on occupations from the statewide High Priority Occupations list effective July 1, 2007 through June 30, 2008.



CENTER FOR
WORKFORCE INFORMATION
 AND ANALYSIS

Department of Labor & Industry

www.paworkstats.state.pa.us

Email: workforceinfo@state.pa.us

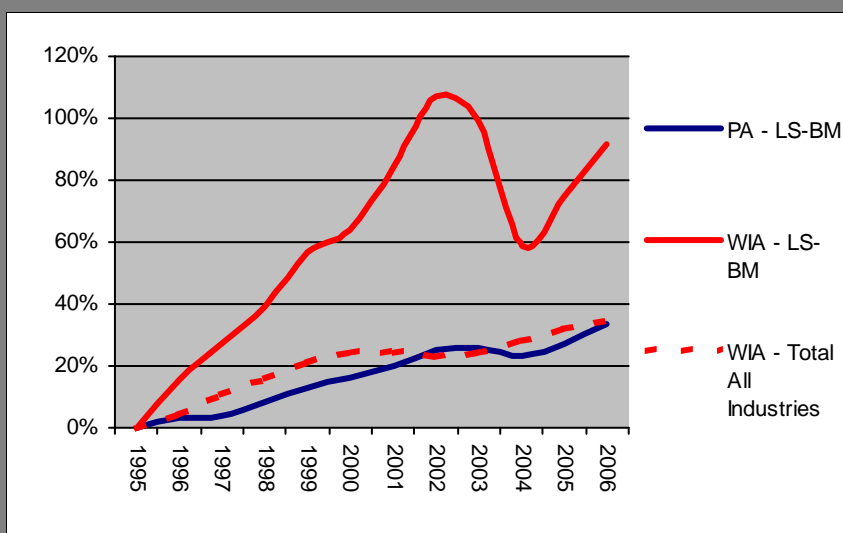
Toll-free: 877-493-3282

December 2007

LS-BM Cluster Statistics

WIA Cluster Employment (2006)	7,587
Percent of Total Area Employment (2006)	3.23%
Employment Growth (1995-2006)	3,632
Employment Percent Growth (1995-2006)	91.83%
Average Annual Wage (2006)	\$110,543
Average Size of Employer Units (2006)	57.0

Percent Change in Employment from 1995**



Select High Priority Occupations***

Biological Technicians
 Biochemists & Biophysicists
 Sales Representatives, Scientific & Technical
 Chemists
 Executive Secretaries & Administrative Assistants
 Medical & Clinical Laboratory Technicians
 Secretaries
 General & Operations Managers
 Medical & Clinical Laboratory Technologists
 Medical Scientists

Chester County Workforce Investment Area (WIA)

Life Sciences - Health Care (LS-HC)

Industries Showing...*

...Employment Growth

Continuing care retirement communities
 Offices of physicians, except mental health
 Druggists' goods merchant wholesalers
 Medical equipment merchant wholesalers
 General medical and surgical hospitals

... Employment Decline

Direct health and medical insurance carriers
 Residential mental retardation facilities
 Home health care services
 Other residential care facilities
 Family planning centers

Notes:

*Employment growth and decline determined from 1995 to 2006.

**This graph displays the percent change of each year compared to the base year of 1995.

***Based on occupations from the statewide High Priority Occupations list effective July 1, 2007 through June 30, 2008.



CENTER FOR
WORKFORCE INFORMATION
 AND ANALYSIS

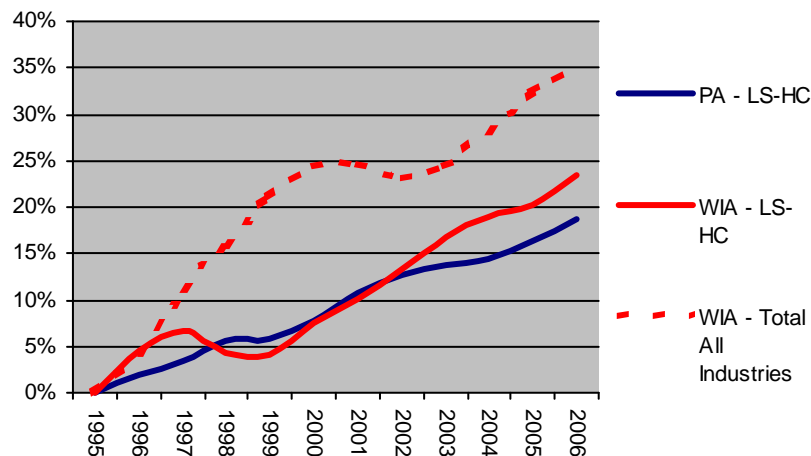
Department of Labor & Industry
www.paworkstats.state.pa.us
 Email: workforceinfo@state.pa.us
 Toll-free: 877-493-3282

December 2007

LS-HC Cluster Statistics

WIA Cluster Employment (2006)	27,399
Percent of Total Area Employment (2006)	11.66%
Employment Growth (1995-2006)	5,207
Employment Percent Growth (1995-2006)	23.46%
Average Annual Wage (2006)	\$49,386
Average Size of Employer Units (2006)	21.6

Percent Change in Employment from 1995**



Select High Priority Occupations***

Registered Nurses
 Nursing Aides, Orderlies & Attendants
 Licensed Practical & Licensed Vocational Nurses
 Home Health Aides
 Medical Assistants
 Personal & Home Care Aides
 Emergency Medical Technicians & Paramedics
 Dental Assistants
 Medical Secretaries
 Dental Hygienists

Chester County Workforce Investment Area (WIA)

Logistics and Transportation (LT)

Industries Showing...*

...Employment Growth

General warehousing and storage
 Other support activities for air transport.
 Other specialized trucking, local
 Couriers
 Other warehousing and storage

... Employment Decline

General freight trucking, local
 General freight trucking, long-distance TL
 Refined petroleum product pipeline transport.
 Pipeline transportation of natural gas
 Used household and office goods moving

Notes:

*Employment growth and decline determined from 1995 to 2006.

**This graph displays the percent change of each year compared to the base year of 1995.

***Based on occupations from the statewide High Priority Occupations list effective July 1, 2007 through June 30, 2008.



CENTER FOR
WORKFORCE INFORMATION
 AND ANALYSIS

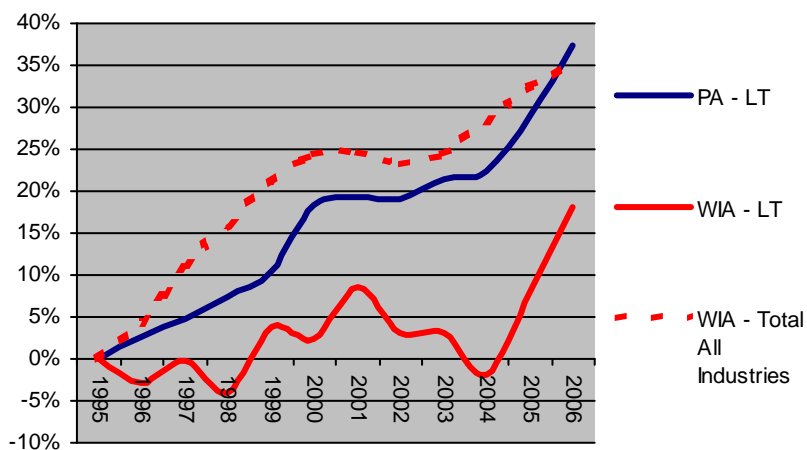
Department of Labor & Industry
www.paworkstats.state.pa.us
 Email: workforceinfo@state.pa.us
 Toll-free: 877-493-3282

December 2007

LT Cluster Statistics

WIA Cluster Employment (2006)	4,410
Percent of Total Area Employment (2006)	1.88%
Employment Growth (1995-2006)	676
Employment Percent Growth (1995-2006)	18.10%
Average Annual Wage (2006)	\$44,993
Average Size of Employer Units (2006)	17.0

Percent Change in Employment from 1995**



Select High Priority Occupations***

Truck Drivers, Heavy & Tractor-Trailer
 Laborers & Freight, Stock & Material Movers
 Industrial Truck & Tractor Operators
 Truck Drivers, Light or Delivery Services
 Bus, Truck & Diesel Engine Mechanics
 Supervisors - Transportation & Vehicle Operators
 General & Operations Managers
 Customer Service Representatives

Chester County Workforce Investment Area (WIA)

Lumber, Wood and Paper (LWP)

Industries Showing...*

...Employment Growth

Home centers
Envelope manufacturing
Wood kitchen cabinet and countertop mfg.
Lumber and wood merchant wholesalers
Wood container and pallet manufacturing

... Employment Decline

Coated and laminated packaging materials mfg.
Paperboard mills
Paper, except newsprint, mills
Coated and laminated paper manufacturing
Folding paperboard box manufacturing

Notes:

*Employment growth and decline determined from 1995 to 2006.

**This graph displays the percent change of each year compared to the base year of 1995.

***Based on occupations from the statewide High Priority Occupations list effective July 1, 2007 through June 30, 2008.



CENTER FOR
WORKFORCE INFORMATION
AND ANALYSIS

Department of Labor & Industry

www.paworkstats.state.pa.us

Email: workforceinfo@state.pa.us

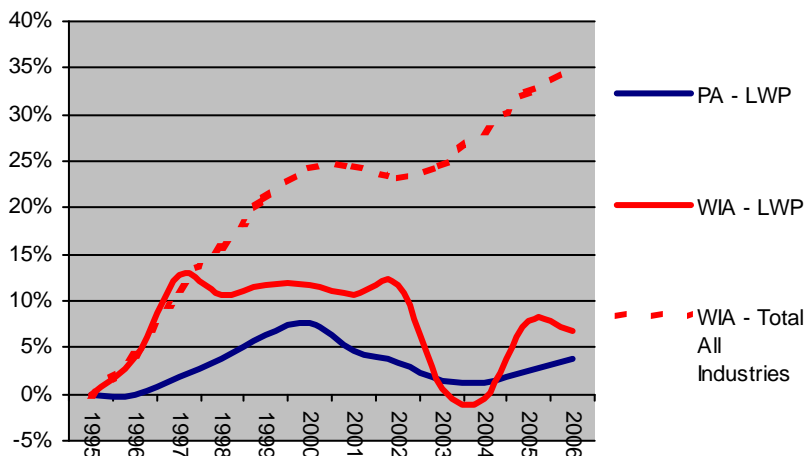
Toll-free: 877-493-3282

December 2007

LWP Cluster Statistics

WIA Cluster Employment (2006)	3,408
Percent of Total Area Employment (2006)	1.45%
Employment Growth (1995-2006)	216
Employment Percent Growth (1995-2006)	6.77%
Average Annual Wage (2006)	\$45,119
Average Size of Employer Units (2006)	22.6

Percent Change in Employment from 1995**



Select High Priority Occupations***

Sales Representatives
Industrial Truck & Tractor Operators
Cabinetmakers & Bench Carpenters
Truck Drivers, Heavy & Tractor-Trailer
General & Operations Managers
Paper Goods Machine Oprs/Tenders
Carpenters
Woodworking Machine Oprs/Tenders
Printing Machine Operators
Supervisors - Production & Operating Workers