

Existing Surfaced Trails

Planning Commission Map Series

Updated Summer 2011



Map Features

— Existing Surfaced Trails

Base Features

— Municipalities

— Parks & Recreation

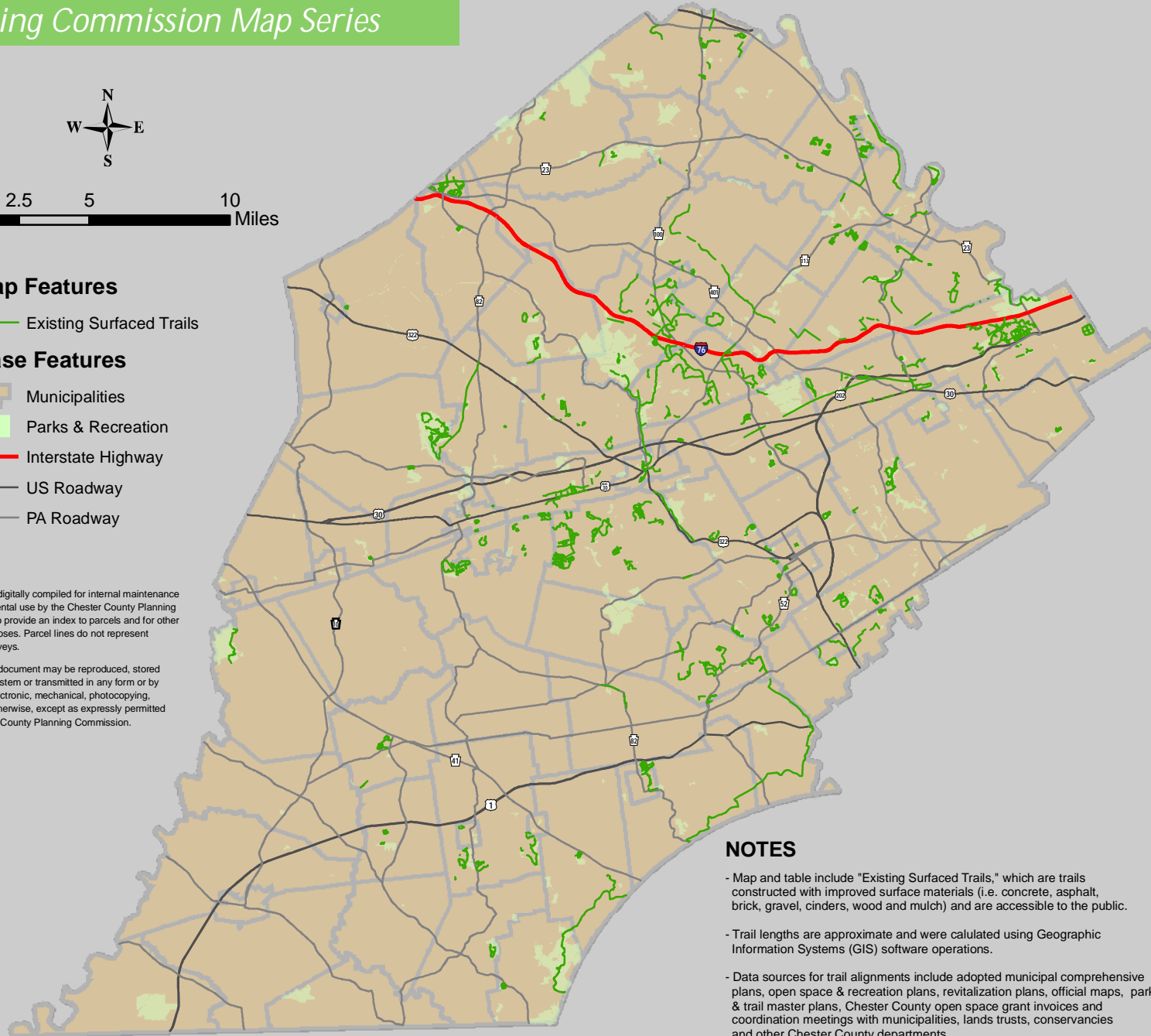
— Interstate Highway

— US Roadway

— PA Roadway

This map was digitally compiled for internal maintenance and developmental use by the Chester County Planning Commission, to provide an index to parcels and for other reference purposes. Parcel lines do not represent actual field surveys.

No part of this document may be reproduced, stored in a retrieval system or transmitted in any form or by any means, electronic, mechanical, photocopying, recording or otherwise, except as expressly permitted by the Chester County Planning Commission.



Existing Surfaced Trails	
Municipality	Miles of Trail
Atglen	0
Avondale	0
Birmingham	1
Caln	5.7
Charlestown	8.9
Coatesville	0.8
Downingtown	2.9
East Bradford	9.7
East Brandywine	3.7
East Caln	1.6
East Coventry	0
East Fallowfield	7.7
East Goshen	4.3
East Marlborough	1.3
East Nantmeal	0.2
East Nottingham	0
East Pikeland	7.3
Easttown	0.6
East Vincent	10.7
East Whiteland	11.3
Elk	0
Elverson	6.9
Franklin	1.2
Highland	0
Honey Brook Twp.	0.3
Honey Brook Boro.	0
Kennett	6.5
Kennett Square	2
London Britain	4.6
Londonderry	3.5
London Grove	5.9
Lower Oxford	0
Malvern	0.8
Modena	0
New Garden	4.8
Newlin	0
New London	0
North Coventry	6.1
Oxford	0
Parkesburg	0
Penn	1.1
Pennsbury	6.9
Phoenixville	2.6
Pocopson	9.5
Sadsbury	0.3
Schuylkill	6.5
South Coatesville	1.3
South Coventry	0
Spring City	2.4
Thornbury	4.3
Tredyffrin	21.6
Upper Oxford	0
Upper Uwchlan	16.4
Uwchlan	19.2
Valley	0
Wallace	2.9
Warwick	1.5
West Bradford	28.6
West Brandywine	6.4
West Caln	5.6
West Chester	0.9
West Fallowfield	1.8
West Goshen	0.9
West Grove	0.4
West Marlborough	0
West Nantmeal	0.6
West Nottingham	0
West Pikeland	4.6
West Sadsbury	0
Westtown	4.9
West Vincent	5.4
West Whiteland	6.7
Willistown	0
TOTAL	283.6

NOTES

- Map and table include "Existing Surfaced Trails," which are trails constructed with improved surface materials (i.e. concrete, asphalt, brick, gravel, cinders, wood and mulch) and are accessible to the public.
- Trail lengths are approximate and were calculated using Geographic Information Systems (GIS) software operations.
- Data sources for trail alignments include adopted municipal comprehensive plans, open space & recreation plans, revitalization plans, official maps, park & trail master plans, Chester County open space grant invoices and coordination meetings with municipalities, lands trusts, conservancies and other Chester County departments.