

Kennett Square Comprehensive Plan



Community Facilities and Services

Municipal & Non-Municipal Services & Facilities

Municipal Services and Facilities

- Administration
- Water
- Wastewater
- Stormwater
- Solid Waste
- Emergency Services - Police

Non-Municipal Services and Facilities

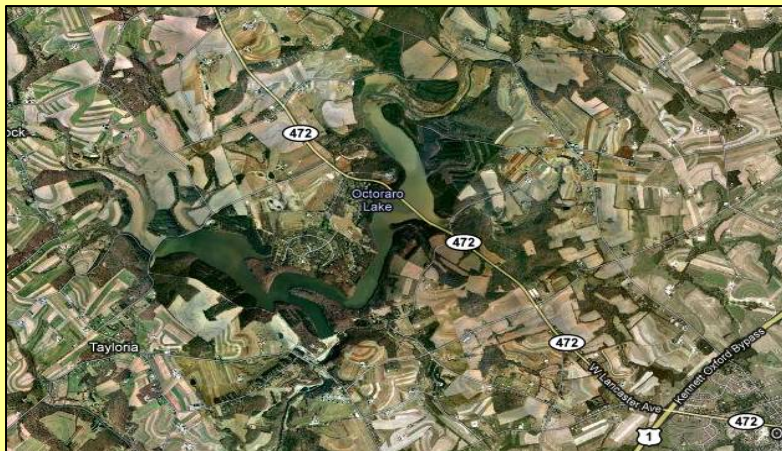
- Emergency Services – Fire and Ambulance
- Library
- Post Office
- Educational Facilities
- Health Care
- Human Services

Administration

- **Borough Hall, while an ideal location, does not adequately serve the Borough's administrative needs.**
- **Plan to move Borough facilities out of ABN park to the NVF site or other location?**
- **Include a recommendation about staffing needs? At least monitor and investigate funding? Including at least a brief recommendation may prove helpful in applying for and receiving grants and other funding in the future.**

Water Supply

- The Borough maintains elevated storage facilities, totaling 1,050,000 gallons, located north of the YMCA and Southeast of the High School.
- The Borough has an agreement with Chester Water Authority for an additional 400,000 gpd, as well as the Yeatman well (70,000 gpd).
- The Borough has been trying to lower the amount allocated from CWA.
- **Concerns:**
 - Aging infrastructure and the increased demands from new residential development.
 - Connections on undersized pipes.
 - Pressure issues on the north side of town, due to the system being gravity fed.



How does the Borough evaluate the need for additional water services , such as the Yeatman well and capacity from CWA? Is this performed regularly? Do you feel it is effective?

Wastewater

Kennett Square's Wastewater treatment plant is located just to the west of the Borough, in Kennett Township, and discharges into the West Branch of the Red Clay Creek.

- Three pumping stations: Cypress Street, East South Street, Mill Road
- The plant's capacity is 1.1 MGD.
- The most recent Chapter 94 Report indicates the maximum projected flows total 0.92 MGD.
- Of existing flows, Kennett Township constitutes approximately 301,800 gpd.



How does the current wastewater system impact the potential for development/redevelopment in the Borough? How will the NVF and Magnolia developments impact capacity? What planning and/or upgrades are necessary?

How are wastewater projects funded in the Borough, and do you feel that the current way is sufficient? Bonds?

Are there pros and cons of working with other municipalities when it comes to wastewater treatment?

Is the Borough is still coordinating with Kennett Township and New Garden Township to provide capacity if the plant were to be expanded?

Status of 537 Plan that is currently underway?

TMDL's

- TMDLs are established for the Christiana River Basin, which includes Kennett Square.
- Established for sediment, nutrients, dissolved oxygen and bacteria – for both high and low flow conditions.
- Stormwater related TMDL allocations are to be incorporated into upcoming MS4 permits.

Has the Borough been required to implement measures to deal with TMDLs or other requirements dealing with water quality or quantity?



Total Maximum Daily Loads (TMDLs) are the sum of the individual waste load allocations and load allocations. A margin of safety is included with the two types of allocations so that any additional loading, regardless of source, would not produce a violation of water quality standards.

Has the Borough considered how the enforcement of TMDLs will affect costs for the Kennett Square?



Stormwater

- Most recent stormwater ordinance is dated 2006.
- Kennett Square is an MS4 community.
- The County is has developpe a Phase I, Act 167 study for the County, and June 30, 2010, it has been submitted to PA DEP for approval.



Is the current stormwater ordinance working for the municipality or do you feel it needs to be revised to include things such as BMP's, NPDES, etc.?



Who enforces the stormwater ordinance and any violations in Kennett Square?

Solid Waste

- The Borough utilizes the SECCRA landfill, and recycles plastics 1-7. There is currently a 3-year contract with Allied Waste, with the potential to extend by 2 additional years.
- Kennett Square is a recycling mandated community, according to Act 101.
- Currently solid waste disposal is paid for out of taxes, but will be transitioning to a “Pay as You Throw” program.
- The Borough is investigating composting on parks and community gardens. **Currently done in ABN Park?**



Do you feel that solid waste programs are operating effectively?

Do you feel residents are taking advantage of recycling services and are participating in household hazardous waste collection programs?

Emergency Services - Police

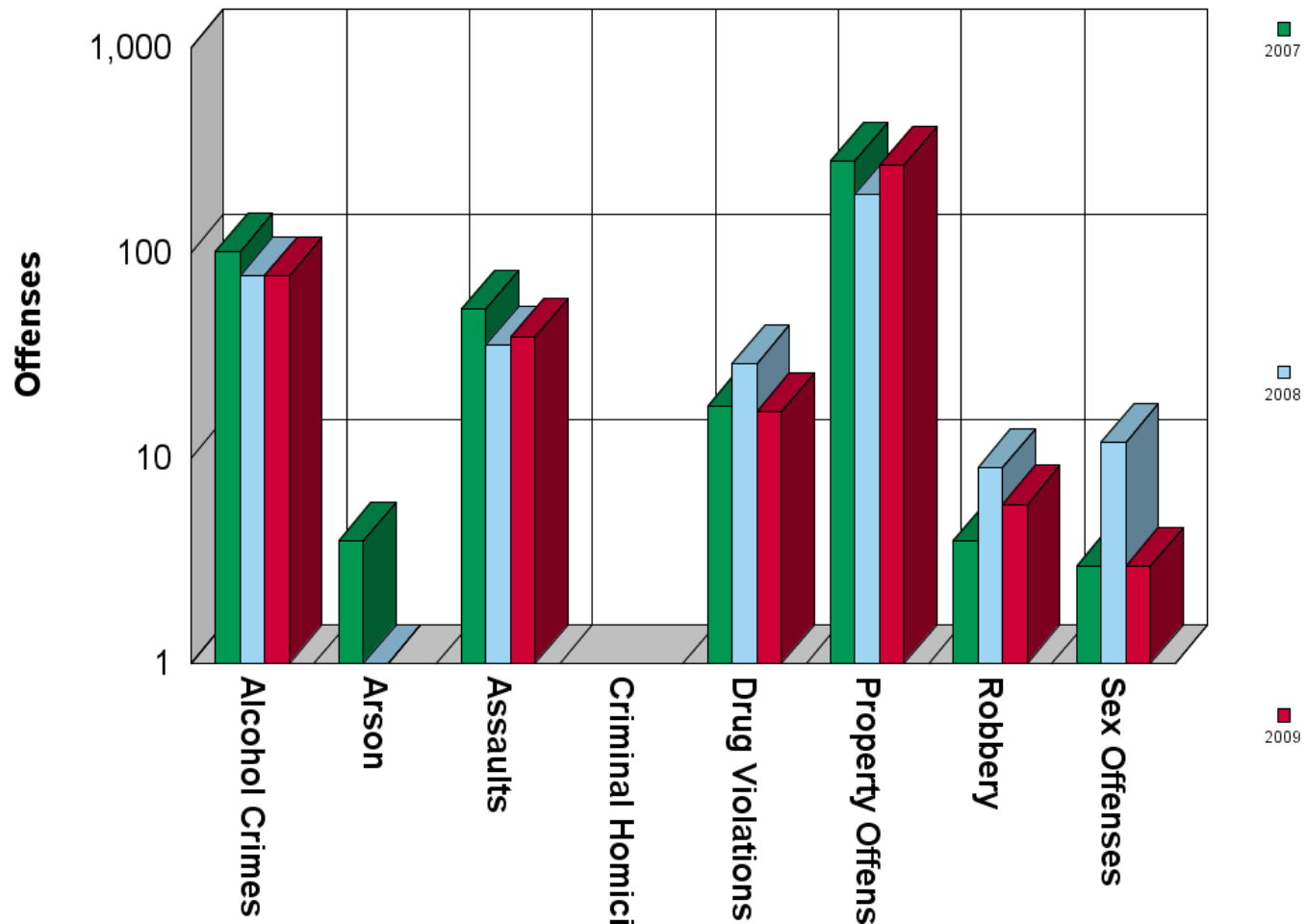
- 13 FT officer positions, 5 PT officer positions – regional study indicated staffing was more than adequate.
- Patrol Borough, Pennock Fields and Anson B. Nixon Park.
- Currently no interest from surrounding municipalities for a regional police force.
- Police department indicates that white collar theft in the form of identity theft and compromised bank accounts are a growing problem.

	# of Offenses		Rate Per 100,000			
	2008	2009	2008		2009	
			Borough	Chester Co	Borough	Chester Co
Criminal Homicide	0	0	0	2	0	1
Sex Related Offenses	12	3	227	62	57	57
Robbery	9	6	171	53	114	51
Assaults	36	39	682	375	739	371
Property Offenses*	193	269	3658	2866	5099	2514
Arson	1	0	19	22	0	16
Drug Violations	29	17	550	274	322	265
Alcohol Crimes	78	78	1478	703	1478	695

**Includes burglary, larceny-theft, motor vehicle thefts, white collar thefts (forgery, fraud), and vandalism.*

Emergency Services - Police

Five Year Trend of Crime for KENNETT SQUARE BORO



Source: Pennsylvania Uniform Crime Reports

Emergency Services - Police

- **Broad Street Facility** – need for space and renovations now (new roof, secure storage).
- **Move to Fire Company's Dalmatian Street property** has been discussed but never formally studied.

Should rental for secure storage be a long-term solution?

Should/can the current police station expand?

Should the police station move?

Is there support for a move to the Kennett Fire Company's Dalmatian Street property to create a Public Safety Center?



Emergency Services - Fire

- Kennett Fire Co No 1 – serves Borough and half of Kennett Township as primary responder, Longwood provides backup.
- 2010 Incidents: 80 Jan - March; 2009 incidents: 315; 2008 incidents: 326.
- Nine acre facility on Dalmatian Street constructed in 1979, includes engine room, club room, offices, and meeting rooms; 1992 addition of the Red Clay Room; 1996 addition of a barn for storage and repair
- Facility allows room for expansion.
- All volunteer with the exception of the Office Manager.
- Funding and volunteerism not currently problem areas.



Emergency Services - Ambulance

- Longwood Fire Company is the primary responder as it provides ALS, Avondale provides backup ALS response.
- Kennett only provides BLS.
- 2010 incidents: 140 Jan - March; 2009 incidents: 589; 2008 incidents: 469.
- Paid staff for daytime hours Sunday – Wednesday; 24 hour paid staffing Thursday – Saturday; approximately 15 part-time staff to cover these shifts.
- Borough provides funds to both Kennett Fire Company and Longwood Fire Company for ambulance service.



Library



- 2008: more than 97,000 patrons circulated over 156,700 items.
- 2009: more than 106,000 patrons circulated over 153,100 items.
- Attendance at children's programs increased from more than 6,300 to more than 7,800 from 2008 to 2009.
- 2009: 16,892 computer users.
- Eight municipalities are served: Kennett Square Borough, and the townships of East Marlborough, Kennett, New Garden, Newlin, Pocopson, Pennsbury, and West Marlborough.
- Not all municipalities contribute their "fair share" – Kennett Square has been contributing approximately 2/3 of its fair share in recent years.
- Recently the Board voted to endorse a move to the Weinstein property as part of the Kennett Community Development Plan, with conditions.
- Issues with current space include: lack of parking, lack of ADA compliance, ongoing building maintenance costs, and lack of space, particularly for newer needs such as computers.
- Research shows that use can increase 50% – 100% with a new or renovated library.



What is the anticipated viability of the YMCA-Library redevelopment venture?

Post Office

Where does the Post Office fit into the Kennett Community Development Plan?



Is there a possibility to include the post office in the YMCA-Library development?

Has there been any contact or communication with the post office?

Educational Facilities

- **Kennett Consolidated School District:**
 - Serves Kennett Square, Kennett Township, New Garden Township, and a small portion of East Marlborough Township, a total of 33 square miles.
 - Enrollment approximately 4,100.
 - School facilities:
 - Kennett High – in the Borough and recently renovated.
 - Kennett Middle – in New Garden Twp, constructed in 2002.
 - Mary D. Lang Elementary - in the Borough.
 - New Garden Elementary – in New Garden Twp, renovated in 1998
 - Greenwood Elementary - in Kennett Township.
 - Under construction: Bancroft Elementary School in New Garden Twp, estimated open September 2011.
- **Saint Patrick's School: Pre-K through 8 Roman Catholic School, currently enrolls approximately 240 students.**



Health Care

Hospitals:

Jennersville Regional Hospital, West Grove

Chester County Hospital, West Chester



Trauma Facilities:

Lancaster General Hospital, Lancaster, PA

Christiana Care, Newark, DE

Crozer Regional Trauma Center, Upland, PA

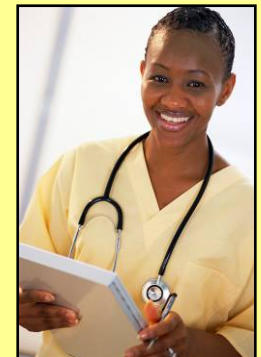


Proposed Trauma Facility:

Paoli Hospital, Paoli (2011)

Health Clinic:

Project Salud at La Comunidad Hispana, Kennett Square



Are there any gaps in health care services for the Kennett Square community?

Human Services

Basic Needs:

His Mission
Kennett Food Cupboard



Employment:

Chester County *CareerLink* / Kennett Public Library

Health Management / Wellness:

Maternal and Child Health Consortium – Healthy Start Program
Project Salud
Nurse managed health center
Workplace wellness program: Kaolin Mushroom Farms ▪ Phillips Mushroom Farms ▪
To-Jo Mushroom Farms



Senior Citizens:

Kennett Area Senior Center, Media Friends Home

Migrant / Immigrant Concerns:

La Comunidad Hispana



Youth Services:

Project Salud
Healthy Youth Program
The Garage

Are requests for basic needs assistance and other social services on the increase with the recent economic downturn?

Opportunities and Obstacles

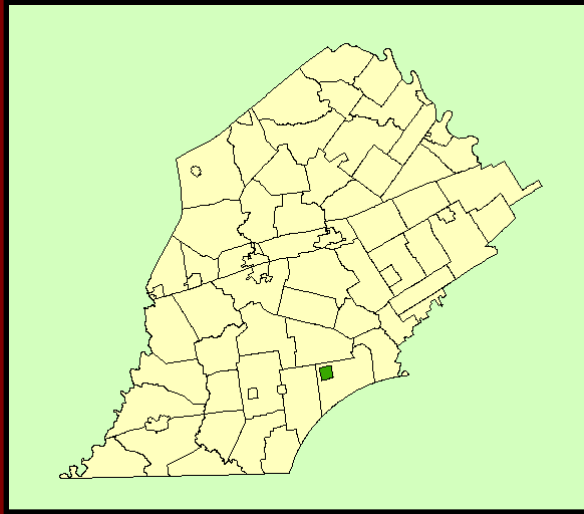
Are there any other topics we missed or important organizations that should be recognized?

Has the downturn in the economy had an effect on some of the service providers such as non-profits?

What opportunities exist to that would further improve the quality of life in the Borough? - New senior center / senior housing.? Incentivize redevelopment such as NVF? Assist or encourage organizations to fill a certain gap (programs for teenagers afterschool or during the summer?)

What are the obstacles? - Funding wastewater improvements to permit future redevelopment? Perception of redevelopment / new development? Water infrastructure costs, maintenance? Library situation? Others?

**Questions
or
Comments?**



Kennett Square Comprehensive Plan

Thank you
and
Goodnight!