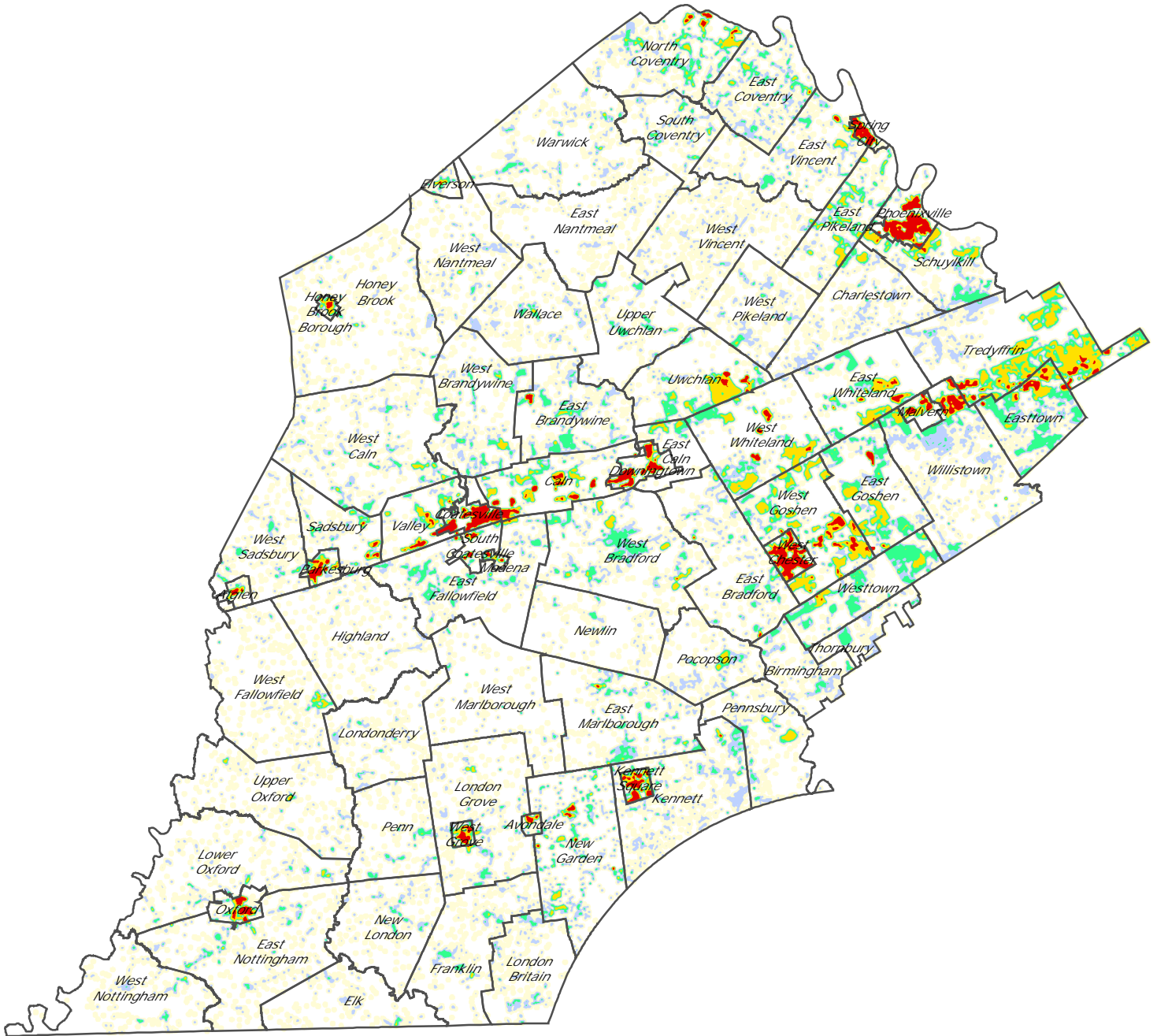


DENSITY OF HOUSING IN CHESTER COUNTY LIKELY TO HAVE LEAD-BASED PAINT AND VARNISH



**Housing Units Per Acre\***

- 1 per 5-10 acres
- 1 per 2-5 acres
- 1 per 1-2 acres
- 1-2 per acre
- > 2 per acre

\*Assessed Residential Properties built before 1978

**Lead in Residential Paint and Plumbing:**  
 About 90% of pre-1940 homes and 60% of pre-1978 homes contain lead-based paints. In 1977 the Consumer Product Safety Commission banned "lead containing paint" prohibiting the use of such paint on products to which consumers are exposed after sale (42 FR 44199). In 1986 the Environmental Protection Agency banned the further use of lead pipes and solder in residential plumbing. (Coluccio VM. Lead-Based Paint Hazards. Wiley, John & Sons: 1997, p. 8-15)

**Limitation of Liability and Use:**  
 County of Chester, Pennsylvania makes no claims as to the completeness, accuracy or content of any data contained herein, and makes no representation of any kind, including, but not limited to, the warranties of merchantability or fitness for a particular use, nor are any such warranties to be implied or inferred with respect to the information or data furnished herein.

