

Chester County Health Department

Chester County Health Department

Government Services Center
601 Westtown Road
Suite 288
P.O. Box 2747
West Chester, PA 19380-0990

Telephone: 610-344-5938
or
800-692-1100 ext. 5938
Fax: 610-344-5934



Margaret C. Rivello, M.B.A.
County Health Director

Chester County Commissioners

January, 2009

Chester County Health Department
Chester County Government Services Center
601 Westtown Road, Suite 288
P.O. Box 2747
West Chester, PA 19380-0990



Certified Food Manager Program

Bureau of Environmental
Health Protection

"Protecting You and Your Environment"

INTRODUCTION

The Certified Food Manager (CFM) program is designed to educate food handlers in safe food preparation and handling techniques. All public food service facilities within the jurisdiction of the Chester County Health Department (CCHD), regardless of whether the facility is profit or nonprofit, are required to employ at least one full time person who has successfully completed Chester County's food manager requirements. Generally, food facility operations limited to non-potentially hazardous food items, whether prepackaged or not, and/or limited to commercially-packaged, potentially hazardous food items do not need a CFM.

CFM RESPONSIBILITIES

The CFM certificate is granted to the person, not a specific public food facility. Generally, an individual serves as a CFM at his or her current place of employment. The individual may only be a CFM for one annually operating food facility. The individual accepting the responsibility of becoming a CFM for a facility is to be in a position having direct, immediate supervision and control over the daily operation of that facility. It is the CFM's responsibility to train the facility's food service workers in proper food handling, general sanitation practices and personal hygiene. To carry out this responsibility effectively, the CFM must work full-time in the facility.



CFM PROGRAM GOALS

Chester County's CFM Program has been designed to accomplish four major goals in all public food service facilities:

1. Ensure that a safe, wholesome food supply is reaching the public.
2. Avoid the consequences of improper food handling, namely: foodborne disease outbreaks, possible closure, fines and adverse publicity.
3. Educate all food service workers in proper food handling and sanitation practices.
4. Promote communications among the Health Department, the CFM, the operators of food facilities, and the food service workers; there-by establishing a solid working relationship.

CERTIFICATION

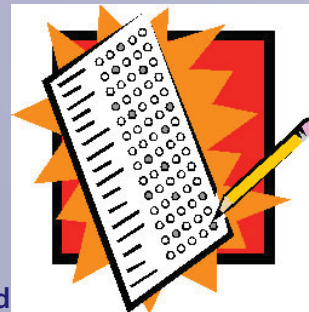
Individuals can obtain a CFM Certification in two ways:

1. Complete an Approved Food Safety Course

The subject areas covered in the approved certification courses include food-borne disease, food protection, personal hygiene, facilities, safety and vector control and food defense.

If the course is taken through one of CCHD's affiliated training centers, Chester County's Application for Food Manager Certification will be given upon successful completion of the course.

Otherwise, a copy of the course completion certificate along with the student's name and contact information must be submitted to the Department to obtain an application.



CCHD affiliated courses are offered at various locations and times throughout the year. Call us at 610-344-5938, or visit <http://dsf.chesco.org/food> for a list of class dates and locations.

Any course listed as an approved certification training course by the PA Department of Agriculture is recognized. A list of approved courses can be obtained from PDA's website: <http://www.agriculture.state.pa.us>.

2. Request Reciprocity

Individuals who have been certified by another regulatory agency and have a current certificate from that agency may obtain CCHD's application by submitting a copy of their certificate, provided that the Regulatory Agency is recognized by CCHD as having an equivalent, reciprocal course.

RECERTIFICATION

Effective January 1, 2007, the Certified Food Manager Certification is valid for a 5-year period. Current certificates issued prior to that date were valid for a 3-year period. On or about six months prior to expiration of an individual's CFM certificate, a renewal notice is sent by CCHD. To become recertified, individuals must attend a 7.5 hour, CCHD approved recertification class prior to the expiration date. Recertification class lists and locations are available at <http://dsf.chesco.org/food>.



Visit us on the web at
<http://dsf.chesco.org/food>