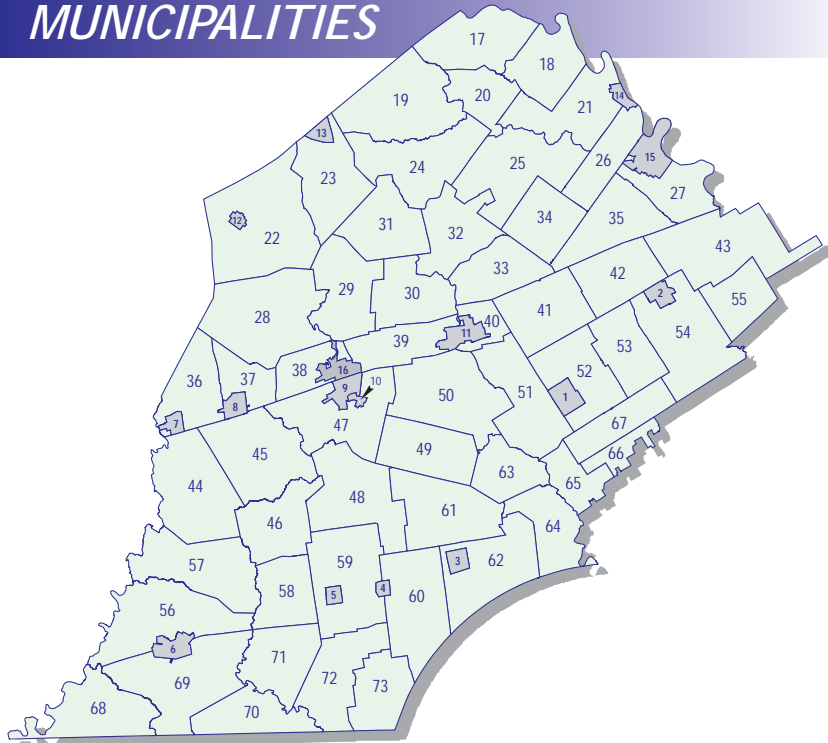


MUNICIPALITIES



Boroughs:

1. West Chester
2. Malvern
3. Kennett Square
4. Avondale
5. West Grove
6. Oxford
7. Atglen
8. Parkesburg
9. South Coatesville
10. Modena
11. Downingtown
12. Honey Brook
13. Elverson
14. Spring City
15. Phoenixville

Cities:

16. Coatesville

Townships:

- | | | |
|---------------------|----------------------|----------------------|
| 17. North Coventry | 36. West Sadsbury | 55. Easttown |
| 18. East Coventry | 37. Sadsbury | 56. Lower Oxford |
| 19. Warwick | 38. Valley | 57. Upper Oxford |
| 20. South Coventry | 39. Caln | 58. Penn |
| 21. East Vincent | 40. East Caln | 59. London Grove |
| 22. Honey Brook | 41. West Whiteland | 60. New Garden |
| 23. West Nantmeal | 42. East Whiteland | 61. East Marlborough |
| 24. East Nantmeal | 43. Tredyffrin | 62. Kennett |
| 25. West Vincent | 44. West Fallowfield | 63. Pocopson |
| 26. East Pikeland | 45. Highland | 64. Pennsbury |
| 27. Schuylkill | 46. Londonderry | 65. Birmingham |
| 28. West Caln | 47. East Fallowfield | 66. Thornbury |
| 29. West Brandywine | 48. West Marlborough | 67. Westtown |
| 30. East Brandywine | 49. Newlin | 68. West Nottingham |
| 31. Wallace | 50. West Bradford | 69. East Nottingham |
| 32. Upper Uwchlan | 51. East Bradford | 70. Elk |
| 33. Uwchlan | 52. West Goshen | 71. New London |
| 34. West Pikeland | 53. East Goshen | 72. Franklin |
| 35. Charlestown | 54. Willistown | 73. London Britain |

◀ CONTACT INFORMATION ▶

Michael Hott:

- ☎ Phone: 610-344-4549
- ✉ Email: mahott@chesco.org



Visit us on the web at:
<http://www.chesco.org/gis/>

Michael Little:

- ☎ Phone: 610-344-4637
- ✉ Email: mlittle@chesco.org



Chester County DCIS/GIS
 121 N. Walnut St., Suite 250
 P.O. Box 2748
 West Chester, PA 19380-0991

COUNTY OF CHESTER

GEOGRAPHIC DATA

A LIST OF PRODUCTS AND PRICES



Board of Commissioners:

Carol Aichele
 Kathi Cozzone
 Terence Farrell

MAP PRODUCTS

◀ CUSTOM MAPS ▶

Map Features Available:

- 2005 Aerial Photography
- Hydrography
- Slopes
- Contours (5' and 10')
- Parcels
- Wetlands
- FEMA Floodplain
- Roads
- Zoning
- Geology
- Soils

SIZE		NON-GOV'T	GOV'T
Small: 8½" x 11" or 11" x 17"	Original	\$15.00	\$15.00
	Copies	\$5.00	\$5.00
Large: 34" x 44"	First Plot*	\$45.00	\$25.00
	Copies	\$10.00	\$10.00

* Map projects requiring more than 1 hour to complete will be billed at the rate of \$45.00 per hr.

◀ TAX MAPS ▶

Standard Tax Map includes:

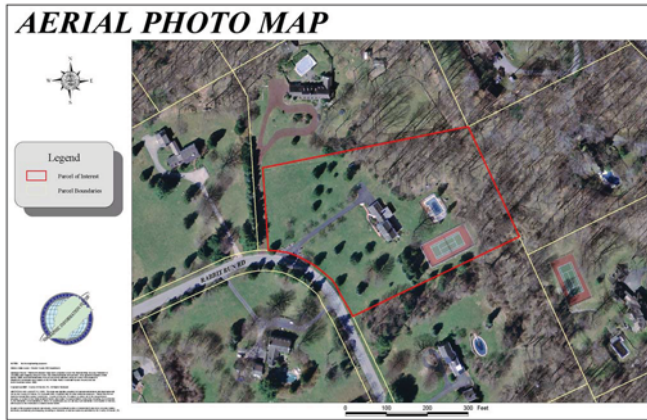
- Parcel lines
- includes parcel numbers, acreage, dimensions (frontage), and annotation
- Right-of-ways
- Hydrography
- Subdivision Boundaries
- includes name and number
- Municipal Boundaries

SIZE		NON-GOV'T	GOV'T
Approx. 30" x 36"	Standard	\$10.00	\$5.00
	w/ Photo	\$20.00	\$10.00

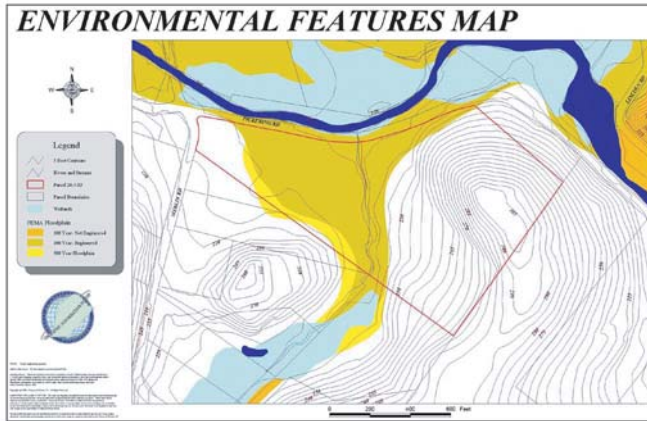


CUSTOM MAP EXAMPLES

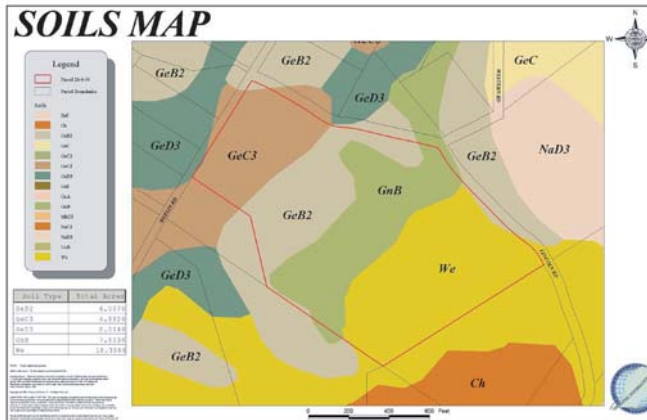
2005 Aerial Photo with Parcel Boundaries and Roads



Parcel Boundaries with 5' Contours, Hydrography, FEMA Floodplain, and Wetlands



Parcel Boundaries with Soil Type Delineation and Acreage Table



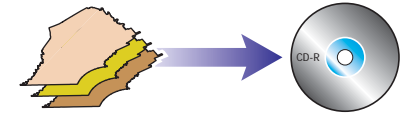
DIGITAL DATA

◀ STANDARD DATA REQUESTS ▶

Standard data set includes:

- 2005 Aerial Photography
- Road Centerlines
- Municipal Boundaries
- Surface Hydrography
- Parcels

Media: CD-ROM
Format: ISO 9660
File Type: .shp (shapefile)



PARCEL COUNT	NON-GOV'T	GOV'T
1 - 1000	\$200	\$100
1001 - 2000	\$300	\$150
2001 - 4000	\$400	\$200
4001 and above	\$500	\$250
Add'l GIS Layers	\$20	\$10
Entire County	\$10,000	\$6,000

◀ CUSTOM DATA REQUESTS ▶

AREA/EXTENT	NON-GOV'T	GOV'T
Parcel plus 1500' radius	\$50	\$30
Add'l GIS Layers	\$10	\$10

◀ 2005 ORTHOPHOTOGRAPHY REQUESTS ▶

AREA/EXTENT	PRICE/RATE
Individual municipality or planning area	\$8.00/tile (w/ \$50 min.)
Custom tile set	\$10.00/tile (w/ \$50 min.)
Entire County	\$2,770 (\$5.00/tile - 554 tiles)

- 1993 & 2000 Orthophotography available upon request. -



- Additional GIS Layers available upon request -