

CHESTER COUNTY

DEPARTMENT OF DRUG AND ALCOHOL SERVICES



**ANNUAL REPORT
FY 2004/05**

The Department of Drug and Alcohol Services was established by the Chester County Commissioners as a public Executive Commission. The Department serves as the Single County Authority (SCA) for Chester County, responsible for the planning, coordination, and administration of community alcohol and other drug prevention, intervention, and treatment services. This is accomplished with the assistance of the Chester County Advisory Board, whose members are appointed by the Commissioners.

Chester County Drug and Alcohol Advisory Board Fiscal Year 2004/05

An advisory board of community volunteers is appointed by the County Commissioners to advise them on the most effective management of services to prevent addiction in the County and to intervene and treat addicted county residents.

Advisory Board Members

Heidemarie G. Bryan, Chairperson
Jeffrey Toalton, Vice Chairperson
Michele L. Tucker, Secretary/Treasurer
Holly W. Acosta
Andrew Bruton
Ralph J. Burton
Elizabeth Dean
Casey Duffy
Joyce Lundquist
Norman J. Pine, II
Elizabeth Walls, Ex-Officio
Angela Linden, Provider Representative
Maureen Neff, Provider Representative

Department Staff

Kim P. Bowman, Executive Director
Vince H. Brown, Deputy Director

Administrative Unit

Linda Morris Zonetti, Fiscal Director
Geri Thomas, Administrative Officer
Larry Harrison, Program Analyst
Meg Polvino, Prevention
Specialist/Program Monitor
Cathy Vaul, Program Representative
Nathan Pillai, Accountant
Connie Jones, Fiscal Technician
Betty Wade, Administrative Assistant
Gloria Anderson, Secretary

Case Management Unit

Jamie Johnson, Case Management
Supervisor
Kate Blonsky, Case Manager
Rebecca Harkins, Case Manager
Karen Strojan, Case Manager
Kara Gaudiello, Case Manager
Crystal Robertson, Case Manager
Lee Edmonds, Secretary
Sheila Thomas, Secretary

Chester County

Department of Drug and Alcohol Services

Government Services Center, Suite 325
601 Westtown Road, P.O. Box 2747
West Chester, PA 19380-0990

VISION

Promote alcohol and other drug policies and programs that improve the quality of life and reflect the cultural and economic diversity of the community.

MISSION

Ensure that quality alcohol and other drug intervention and treatment, as well as alcohol, tobacco and other drug prevention programs are provided for citizens in an efficient and cost-effective manner.

GOALS

The service delivery system for county residents has been designed to provide comprehensive and accessible care for both adolescents and adults in need of treatment or intervention services and assistance to communities trying to prevent addiction. There are several overriding goals that the Department tries to achieve in the design and delivery of prevention, intervention, case management, and treatment services as listed below:

- Assist communities in becoming their own change agents.
- Increase community recognition of alcohol and tobacco as drugs.
- Prevent the continuation of intergenerational family dysfunction due to substance abuse.
- Promote understanding of the disease concept and the hereditary risk factors associated with addiction.
- Assist clients in creating self-sufficient lives.
- Continuously evaluate the services provided to insure that they are accessible, high quality, effective, cost-efficient and best meet the needs of the citizens of Chester County.

DESCRIPTION OF DEPARTMENT SERVICES

PREVENTION

Prevention services focus on decreasing the risk factors and increasing the protective factors associated with the development of unhealthy behaviors. During the 2004/05 fiscal year, the Chester County Department of Drug and Alcohol Services supported alcohol, tobacco and other drug (ATOD) prevention efforts in the six (6) federal prevention strategies (Information Dissemination, Education, Alternative Activities, Problem Identification & Referral, Community Based Process, and Environmental) via contracts with prevention providers.

By sharing knowledge and providing technical assistance, the community prevention provider assists individuals and communities in strengthening their resistance to alcohol and other drug usage by using a variety of strategies, including the Communities That Care model. The main provider subcontracted as a community-based prevention resource was:

The Coad Group Exton, PA	(610) 363-6164
-----------------------------	----------------

Two other subcontracted prevention providers specializing in interacting with children in the context of their home communities in order to establish a foundation for building refusal skills later in life were:

Holcomb Behavioral Health Systems Exton, PA	(610) 363-1488
--	----------------

The Lincoln Center Bridgeport, PA	(610) 277-3715
--------------------------------------	----------------

The following prevention provider conducted an evidence-based middle grade prevention program that teaches youth skills for resisting substance abuse. Additionally, this provider maintained a community drop-in center for youth; providing them with a safe, drug-free environment:

Community Youth and Women's Alliance Coatesville, PA (formerly Coatesville YWCA)	(610) 384-9591
---	----------------

INTERVENTION

Intervention services are designed to identify individuals abusing alcohol or other drugs, and support their engagement in treatment. Intervention services may seek to identify early symptoms of substance abuse and intervene to prevent progression, or they may be designed to utilize a crisis or problem an individual is experiencing to engage them in needed treatment. The Department, via a subcontractor, provided the following intervention program in fiscal year 2004/05:

Student Assistance Programs (SAP): SAP programs identify middle and high school students experiencing problems in school that may be due to the use of alcohol or other drugs. The SAP program provides a point of intervention, assessment and referral to treatment.

The subcontracting agency for the SAP fiscal year 2003/04 was:

The Coad Group
Exton, PA

(610) 363-6164

CASE MANAGEMENT

The Department's Case Management Unit provides two forms of case management services: Administrative Care Management and Intensive Case Management. Administrative Care Management is responsible for coordinating and managing funding resources for the most intensive levels of addiction treatment. Administrative Care Managers insure that appropriate levels of care and lengths of stay are authorized for clients in non-hospital and inpatient treatment services. They follow the client throughout the county-funded treatment system to insure that services are appropriately provided, that there is continuity of care, and that aftercare planning is completed.

Intensive Case Management is a direct service designed to assist in determining and obtaining needed support services. This could include, but is not limited to, housing, employment, education, and medical services. Intensive Case Managers may assist clients both during their treatment involvement, as well as when they are not in treatment. They also act as client advocates when necessary.

Prison-based Assessment:

The Case Management Unit also provides drug and alcohol assessments at Chester County Prison. Referrals for assessment include both pre- and post-trial clients.

The Case Management Unit is part of the Department and has offices in West Chester, at the Government Services Center. The phone number is listed below:

Department of Drug and Alcohol Services Case Management Unit (CMU):

West Chester, PA

(610) 344-5630

TREATMENT

Treatment services provide assistance to people whose lives have been negatively affected by their own or another's use of alcohol and/or drugs. The majority of the County's drug and alcohol funds are utilized to purchase treatment services for addicted individuals to begin the path of recovery and self-sufficiency.

Assessment:

The addiction treatment system uses several "points of entry" for individuals seeking treatment. Each of these sites uses a standard procedure and instruments to assess the severity of addiction and determine the level of care needed. The points of entry during fiscal year 2004/05 are listed below:

Center for Addictive Diseases (CAD), Exton, PA	(610) 648-1130
Department of D&A Services CMU, West Chester, PA	(610) 344-5630
Gaudenzia Outpatient, West Chester, PA	(610) 429-1414
Northwestern Human Services (NHS), Kennett Square, PA	(610) 444-0555
Northwestern Human Services (NHS), Phoenixville, PA	(610) 933-0400
Riverside Care, Coatesville, PA	(610) 383-9600

After assessment, the individual is referred to the most appropriate level of care in the treatment continuum, which could be one or more of those listed below:

Detoxification:

Detoxification provides clinical supervision and assistance in the management of withdrawal for drug or alcohol dependent or intoxicated persons. Detoxification can be medically monitored or medically managed. Fiscal Year 2004/05 subcontractors located in the county are listed below; a complete list of subcontracted detoxification resources is available at the Department office.

Bowling Green Brandywine, Kennett Square, PA	(610) 268-3588
Malvern Institute, Malvern, PA	(610) 647-0330

Residential Non-Hospital:

Often called "rehab", this is an intensive live-in therapeutic environment. The specific program and length of stay (varying from 14 to 180 days) is based on individual needs. Treatment subcontracts include a variety of programs, ensuring that clients' special needs will be met, whether they are adolescents, women, women with children, Spanish speaking only, have co-occurring drug and alcohol and mental health or health disorders, or are involved in the criminal justice system. The complete list of fiscal year 2004/05 subcontracted agencies is available at the Department office. Following are those located in Chester County:

Bowling Green Brandywine, Kennett Square, PA	(610) 268-3588
CYWA Samara House, Coatesville, PA	(610) 384-9591
Gaudenzia House, West Chester, PA	(610) 399-6929
Gaudenzia Kindred House, West Chester, PA	(610) 399-6571
Malvern Institute, Malvern, PA	(610) 647-0330

Halfway House:

This live-in combination of therapy and support is offered to recovering person(s) having completed prior treatment, who may be homeless or near homeless and unemployed or in need of intensive support for successful transition to sober independent living. Self-sufficiency is the goal. While there are no halfway houses located in the

county, the Department contracts with a number of halfway houses outside of Chester County. The fiscal year 2004/05 Half-way House Subcontractor list is available at the Department office.

Partial Hospitalization:

Partial hospitalization is intensive treatment provided on an outpatient basis for clients with serious addiction problems that have sufficient supports to engage in treatment in the community. Services are provided according to a planned regimen consisting of regularly scheduled sessions at least 3 days per week with 10 or more therapeutic hours per week. Following is a list of fiscal year 2004/05 subcontracted providers:

Center for Addictive Diseases, Exton, PA	(610) 648-1130
NHS Kennett Square, Kennett Square, PA	(610) 444-0555
NHS Phoenixville, Phoenixville, PA	(610) 933-0400
Riverside Care, Coatesville, PA	(610) 383-9600

Intensive Outpatient:

Intensive outpatient consists of group-based therapy provided at least three (3) days a week plus individual counseling once a week for a total of 6–9 hours therapy. There was one provider of this service for fiscal year 2004/05:

Gaudenzia Outpatient, West Chester, PA	(610) 429-1414
Center for Addictive Diseases, Exton, PA	(610) 648-1130

Outpatient Drug-Free:

Counseling is provided one or two hours per week and may be primary care, aftercare from rehab, or utilized as an intervention to encourage individuals to enter more intensive services. Initial assessment to determine referral to the appropriate level of care is also provided. Treatment is also provided for family members affected by another's alcohol or drug abuse. The outpatient subcontractors in fiscal year 2004/05 are listed below:

Center for Addictive Diseases, Exton, PA	(610) 648-1130
Gaudenzia Outpatient, West Chester, PA	(610) 429-1414
NHS Kennett Square, Kennett Square and Oxford, PA	(610) 444-0555
NHS Phoenixville, Phoenixville, PA	(610) 933-0400
Riverside Care, Coatesville, PA	(610) 383-9600

Spanish speaking services are available by a bilingual and bicultural therapist at NHS Kennett Square.

Outpatient Methadone Maintenance:

Methadone, a medication to prevent withdrawal associated with opiate dependence, is provided in conjunction with individual and group therapy. The subcontractor for this service in fiscal year 2004/05 was:

Advanced Treatment Systems, Coatesville, PA

(610) 466-9250

Advocacy:

The provider listed below assists Chester County residents having difficulty identifying and accessing drug/alcohol treatment benefits/services via their insurance company. The provider works directly with individuals or families to assist them in filing grievances and appeals, case management, and follow up.

Bucks County Council on Alcoholism
and Drug Dependence, Inc. – PRO-ACT

1 (800) 221-6333

Correction/Detention Services:

Recognizing the role alcohol and other drug abuse plays in the criminal justice system, the Department supports intervention services at the Chester County Prison and the Juvenile Detention Center.

At Chester County Prison, CiviGenics, Inc., using a psycho-educational model, provides intervention services for inmates. Additionally, assessments to determine post release treatment recommendations are conducted by the Department's Case Management Unit.

At the Juvenile Detention Center, intervention and education services are provided by Abonnir Counseling Associates.

FISCAL YEAR 2004/05 ACCOMPLISHMENTS AND SIGNIFICANT EVENTS

ADMINISTRATION

- Undertook strategic planning process to review all SCA functions, set goals, determine resources needed, and develop measurable plan for achieving goals. Two priorities are treatment for youth and addressing co-occurring disorders.
- Conducted a subcontractor satisfaction survey, with a 57% response rate. The survey indicated a 98% overall satisfaction rate for Department drug and alcohol functions.
- SCA director participated in the state advisory committee for co-occurring disorders; addressing such issues as training/workforce development, credentialing, screening/assessment, data integration/performance measures, and reimbursement.
- Completed competitive selection process for prison based education and intervention services with Civigenics chosen to be the provider.
- Invited by the Chester County Intermediate Unit to participate in the development of an education based drug/alcohol treatment program for adolescents.
- SCA staff continued to be active participants in multiple cross system efforts with the following departments/systems as well as Community groups: Juvenile Probation, Juvenile Detention, Children, Youth and Families, Mental Health, Adult Probation/Parole, County Corrections, County Health Department, Department of Human Services, Aids Consortium, Latino Council, Paratransit, SHIP, Weed and Seed, Family and Community Partnership.
- Trained 28 people in women's issues in drug/alcohol treatment and 17 people in the case management of publicly funded clients. Trained seven major providers of treatment services in the completion of requests for information used in the contracting process. Also expanded training mailing list to include non-contracted agencies with an interest in drug/alcohol issues.
- Continued partnership with Chester County Courts in the ongoing operation of Drug Court, maintaining assessment/treatment/intensive monitoring functions, and also reinforcing mental health protocol.
- Continued participation on human services project team developing mechanisms for uniform monitoring/reporting of subcontracted providers.
- Managed 34 subcontractors, and 7 agreements encompassing 92 programs to insure that a comprehensive prevention, intervention, and treatment system was available to county residents.

CASE MANAGEMENT

- Managed a total of 655 unduplicated clients in residential treatment, including detox, rehab, and halfway house.
- Provided Intensive Case Management (ICM) services to 24 Chester County residents.
- Continued participation in the Child Adolescent Service System Program Administrative Review Team (CART) with Children, Youth and Families (CYF), Mental Health/Mental Retardation (MH/MR), Juvenile Probation Office (JPO) and Community Care Behavioral Health (CCBH), in a collaborative effort of child-serving systems to identify and eliminate barriers to the client.
- In September 2004, hosted local National Drug and Alcohol Awareness month by providing informational literature, program brochures, and 12-step meeting lists to the public.
- In March 2005 participated in the National Alcohol Screening Day by providing an Alcohol Problems Screening Questionnaire. Provided direction and guidance to treatments services, if appropriate. Also provided drug/alcohol literature.
- Continued participation in the Local Housing Options Team (LHOT) housing project. Participants included the Department of Human Services, Community Development, Self Determination, Veterans Affairs, Human Services, Inc., Residential Living Options, MH/MR, and Cerebral Palsy of Chester County. The LHOT was formed in response to needs identified via multi-disciplinary meetings.
- Continued participation in the multi-disciplinary trainings to new County, human service employees on how to “Access Child-Serving Systems”; workgroup includes Children, Youth and Families, Juvenile Detention, Drug and Alcohol, and Mental Health.
- Case Management staff participated in a total of 239.5 training hours, through trainings offered by the State, County and various other organizations. The trainings included such topics as Respectful Work place, Understanding Dual Diagnosis, Confidentiality and Pharmacology, Diversity of Sexuality Issues Facing Human Services, and HIV/STDs.
- Continued participation in review of prison-based and correctional center drug and alcohol services via monthly meetings.
- Completed 226 assessments at Chester County Prison.

TREATMENT

- Provided treatment-funding assistance for an unduplicated total of 2,617 Chester County residents. This is an increase of 13% (339 individuals) over the previous fiscal year.
- Maintained minimum credentialing standards for therapists providing level of care assessments.
- In conjunction with the County Mental Health Office, maintained a drop-in support group in the West Chester area for individuals with co-existing mental illness and addictive disorders.
- A high percentage of outpatient/intensive outpatient/partial survey respondents expressed satisfaction with their experience: 93% believed their therapist knew what they were doing; 90% believed coming to their therapist was helpful; and 91%, if they had it to do all over again, would return to the agency for services.
- Under subcontract with Gaudenzia, arranged for assessment/referral services for homeless population on-site at the St. Agnes day shelter in West Chester.
- Subcontracted treatment provider Center for Addictive Diseases started an intensive outpatient program.

PREVENTION

Alcohol, tobacco and other drug (ATOD) prevention services and activities for FY 2004/05 continued to target risk factors that were identified via a countywide needs assessment conducted in 2002 and 2004. Risk factors are defined as characteristics in the community, family, school, and individual's environments that are known to increase the likelihood that a person will engage in one or more problem behaviors. Based on community input as well as various other data sources we identified and prioritized the following two risk factors:

- Favorable Attitudes Toward the Problem Behavior
- Friends Who Engage in the Problem Behavior

ATOD prevention services were provided in each of the following six federal prevention strategies: Information Dissemination, Education, Alternative Activities, Problem Identification, Community Based Process and Environmental. Listed below are highlights from programs funded during FY 2004/05:

- Provided awareness and knowledge of the nature and extent of substance abuse and addiction and its effects on individuals, families, and communities via the services identified below. Services were provided upon request to a variety of civic, business, faith based and community organizations:

- Personal and confidential, 24-hour/7 day a week telephone information and referral line – responded to 1,355 calls
 - Speaking Engagements – 39
 - Health Fairs - 22
 - Resource Library & Satellite Centers – 8
 - Printed Material Dissemination – 80,253
 - Audiovisual Materials Disseminated - 22
 - Insurance Advocacy Service – served 23 individuals
 - Newsletters Developed – 14
 - Newsletters Disseminated – 10,297
- Emphasis once again centered on community mobilization efforts. Grassroots community coalitions and more formalized community coalitions known as Communities That Care (CTC) sites were provided with the skills, tools and resources needed to move toward or sustain self-sufficiency. The CTC coalitions have achieved progressively greater community visibility and support as well as increased stability. The CTCs are responsible for bringing over \$175,000 of additional prevention funding into Chester County. Overall, 31 unduplicated coalitions received the following types of support:
 - Technical Assistance – responded to a total of 876 requests;
 - Provider staff attended over 150 individual coalition meetings;
 - Trainings and Workshops – 6, topic areas included: risk assessments, funding, youth activism, and prevention basics. A total of 113 people attended the various trainings;
 - Surveyed Coalition Members on Future Needs – data used for FY 2005/06 planning purposes;
 - Caring Communities Consortium – held 4 networking/in-service training opportunities specific to community based prevention organizations.
 - Beginning Alcohol and Addictions Basic Education (BABES) – prevention education program served 905 children, ages 4 to 8, with a seven session, school-based program addressing the following topic areas: peer pressure, coping skills, decision-making, self-image and basic ATOD prevention education.
 - Peer Leadership Programs/Activities
 - Trained 55 high school and college age youth in peer leadership skills to work as positive role models for at-risk youth.
 - Provided financial support and technical assistance for the annual Students Against Destructive Decisions (SADD) conference. A total of 139 students and 22 advisors attended representing 11 school districts. This one-day conference included motivational speakers and workshops on related topics.
 - Provided financial support and technical assistance for a weekend retreat whose emphasis was on leadership training. A total of 85 youth and 12 adults attended.
 - After School Enrichment Program – partnered with local elementary school and community coalition to provide academic, social and recreational opportunities for 45 “at-risk” youth through trained volunteers.

- Continued support of the Chester County Health Department's Tobacco Free Coalition in its mission to: promote educational opportunities that discourage tobacco use, advocate for smoke-free environments and reduce the rate of tobacco sales to minors. Although we saw a slight increase in tobacco sales to minors for the following time period: July 1, 2003 – June 30, 2004: 5.18% to 6.91% for the ten month period beginning July 1, 2005 and ending April 30, 2005 it should be noted that due to merchant education efforts the sale rate to minors was 0% in July 2005.
- Alternative Activities
 - Post Prom Activities – provided ATOD prevention education information and funding to 12 community coalitions planning post prom activities. Post prom planning committees attended 5 information sharing/networking meetings and were provided ATOD prevention information via an email distribution list. Approximately 4,478 students attended post prom activities.
 - Drop –In Center: provided Coatesville area youth, ages 11 –18, a safe, supportive environment with positive recreational, academic and social supports.
- Evidence-Based Programs (reviewed and approved as “model programs” by Substance Abuse and Mental Health Services Administration's National Registry of Evidence-Based Programs and Practices). Supported the following programs:
 - NFP (NFP) – in conjunction with the Chester County Health Department, provided first time, low income mothers with home visitation services from public health nurses. Program addresses substance abuse and other behaviors that contribute to family poverty, subsequent pregnancies, poor maternal and infant outcomes, suboptimal childcare and lack of opportunities for the children. Total of 161 families were served.
 - Family Matters – parent education program designed to prevent tobacco and alcohol use in children 12 to 14 years old. Program is delivered through a series of four booklets mailed to the home with follow-up phone calls to parents by prevention specialists.
 - Project Alert – drug prevention curriculum for middle school students that reduces both the onset of substance abuse and their regular use. Via guided classroom discussion and interactive small group sessions, youth master the skills needed to resist pro-drug pressures from their peers. A total of 30 students completed the 11 core sessions.

INTERVENTION

Student Assistance Program:

The Student Assistance Program (SAP) identifies and refers secondary level students for whom substance abuse and/or mental health issues may be a barrier to their achieving academic success. County funded SAP services included the following:

- District Council - monthly networking/information sharing meetings for SAP professionals. Membership includes public, private/parochial schools, charter schools and alternative education programs. Meeting format included in-service trainings highlighting various local organizations and resources.
- Provided technical assistance to 36 SAP Teams.
- Sponsored two workshops for SAP professionals; Prescription Drug Abuse with 34 participants and Adolescent Children of Substance Abusers (COAs) with 35 participants.
- Developed and published nine newsletters targeting over 475 SAP professionals per issue. Newsletters addressed issues relevant to the SAP process.

SAP Statistics:

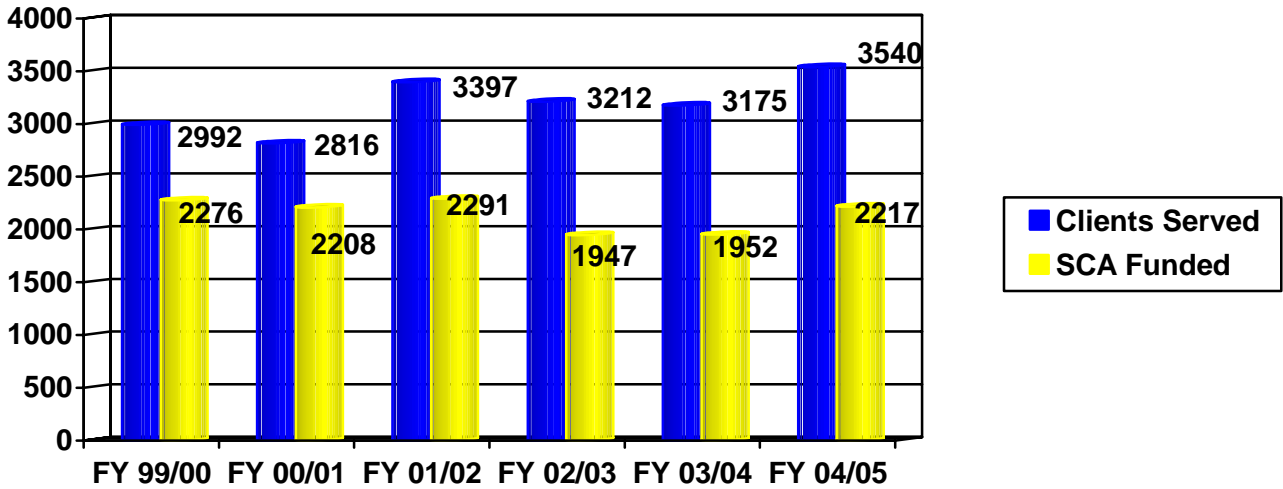
The following statistics reflect students seen by county-funded SAP liaisons and is not representative of the entire SAP program in Chester County:

- 741 students were seen for problem identification and referral.
- 260 students were assessed for drug and alcohol and/or mental health issues.
- 145 students were referred for school-based alcohol and other drugs (AOD) Intervention Groups; 94 (65%) students completed the group.
- 128 students were referred to AOD treatment:
 - 124 students were referred to community based outpatient treatment
 - 4 students were referred to inpatient AOD treatment

Treatment

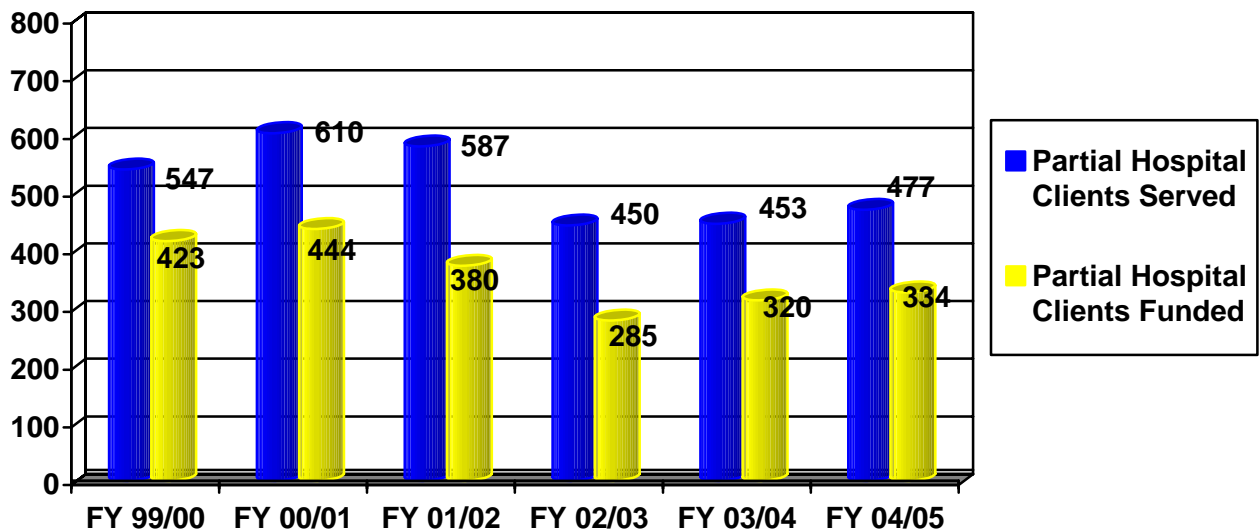
Outpatient: 3,540 clients were served in the county contracted outpatient system of care during fiscal year 2004/05. Of those admitted, 2,217 or 63% were funded to some degree by the SCA.

Outpatient Clients FY 99/00 – 04/05 (Unduplicated)



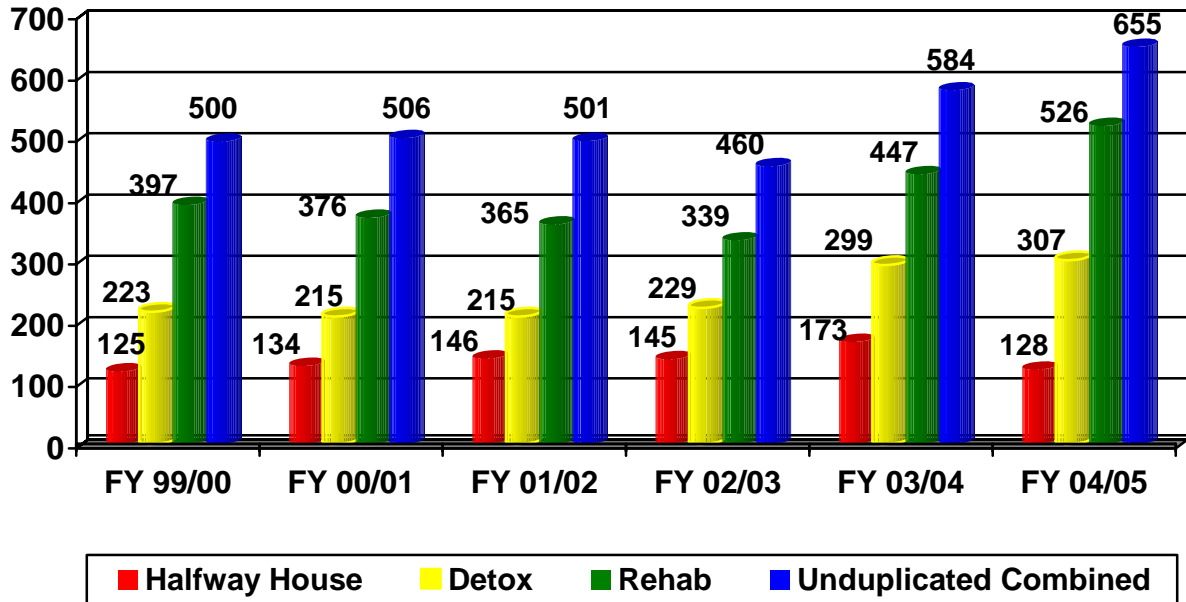
Partial Hospitalization: 477 clients were served in the county contracted partial system of care during fiscal year 2004/05. Of those admitted, 334 or 70% were funded to some degree by the SCA.

Partial Hospital Clients FY 99/00 – 04/05 (Unduplicated)



Residential: A total of 655 unduplicated citizens participated in SCA funded residential treatment services during fiscal year 2004/05. This was 71 more than the previous fiscal year. Most of the increase was experienced at the rehab level of care. This is the highest number of residential clients served in 6 years.

Residential Services Over Time



Special Populations and Services

HIV Testing & Counseling:

Riverside Care, Community, Youth and Women's Alliance (both in Coatesville), and Advanced Treatment Systems in Thorndale primarily provided HIV prevention counseling/testing. The chart below provides statistics for this program at 5-year intervals since fiscal year 1991/92. **Note:** Services were suspended for 2 months (Spring 2005) because of antigen shortage at the state lab.

Fiscal Year	# Pre-test Counseled	# Tested	# and % Testing Positive	
91/92	272	132	4	3%
96/97	154	86	1	1%
01/02	131	119	0	0
02/03	160	127	0	0
03/04	129	121	0	0
04/05	113	104	0	0

Injection Drug Users (IDUs):

Fiscal Year	Clients Served	IDUs Served	% of Clients Served
99/00	3,460	163	5%
00/01	3,487	192	6%
01/02	3,380	190	6%
02/03	3,273	173	5%
03/04	3,486	168	5%
04/05	3,894	198	5%

Pregnant Women/Women with Children:

Fiscal Year	Total Served	Women Served	% of Total Served	Pregnant, Parenting Served	% of Women Served
99/00	3,460	898	26%	275	31%
00/01	3,487	851	24%	113	13%
01/02	3,380	885	26%	62	7%
02/03	3,273	837	26%	152	18%
03/04	3,486	781	22%	84	11%
04/05	3,894	842	22%	102	12%

SERVICES DESIGNED SPECIFICALLY FOR TARGETED POPULATIONS

Latinos:

One outpatient subcontractor (NHS Kennett Square) provides bilingual, bicultural treatment services for Latino clients. Residential rehab services for Latinos were available through contracts with Nuestra Clinica in Lancaster PA and CURA in Newark, New Jersey. Detox services for Latinos are available via subcontract with Valley Forge Medical Center/Hospital in Norristown.

Women with Children/Pregnant Women:

Two (2) residential treatment programs for pregnant women/women with children are located in Chester County. Samara House, a program of the Coatesville CYWA, and Kindred House, a Gaudenzia program, both provide specialized treatment services for pregnant women and women with young children. In addition to the treatment services for the women, on-site prevention programming occurs for the children. Chester County also contracted with five (5) additional agencies located outside of the County for residential rehab treatment for pregnant women/women with children and four (4) halfway house programs for same.

All subcontractors give intake priority to pregnant women. Outreach targeting pregnant women/women with children is required of all ambulatory care subcontractors.

Children and Adolescents:

All outpatient providers serve adolescents on site. NHS Kennett Square and Oxford also provides treatment at public schools in their geographic areas.

Abonnir Associates, based in West Chester, provides intervention services for juvenile offenders at the Detention Center in Lima.

Chester County also subcontracted with three (3) out of county agencies for residential rehab treatment, which exclusively serve adolescents.

Elderly:

Center for Addictive Diseases, a subcontracting agency, operates an outpatient group therapy program specifically for the elderly person experiencing problems with alcohol and/or other drugs.

Criminal Offenders:

The SCA continues to be involved in the Chester County Drug Court, both as a member of the management team and through contracts for treatment services. In fiscal year 2004/05, this included treatment representation in Court by NHS of West Chester, Gaudenzia West Chester Outpatient, and Riverside Care.

During fiscal year 2004/05, Civigenics, based in Reading PA, provided education and intervention services to 223 male and female prison inmates at the County Prison. In collaboration with the correctional center at the prison campus, the SCA also participated in the monitoring of CiviGenics pre-release intensive recovery program.

The Department's Case Management Unit is responsible for the assessment, referral, and case management for the incarcerated addicted offender. They conducted a total of 226 assessments at Chester County Prison.

HIV Infected:

Gaudenzia People With Hope in Philadelphia, a specialized residential rehab program exclusively for adult, HIV infected clients was available via contract.

Injection Drug Users:

All treatment providers give intake priority to injection drug users. In the event of a waiting list, a plan is in place to insure that interim services are provided.

Mentally Ill:

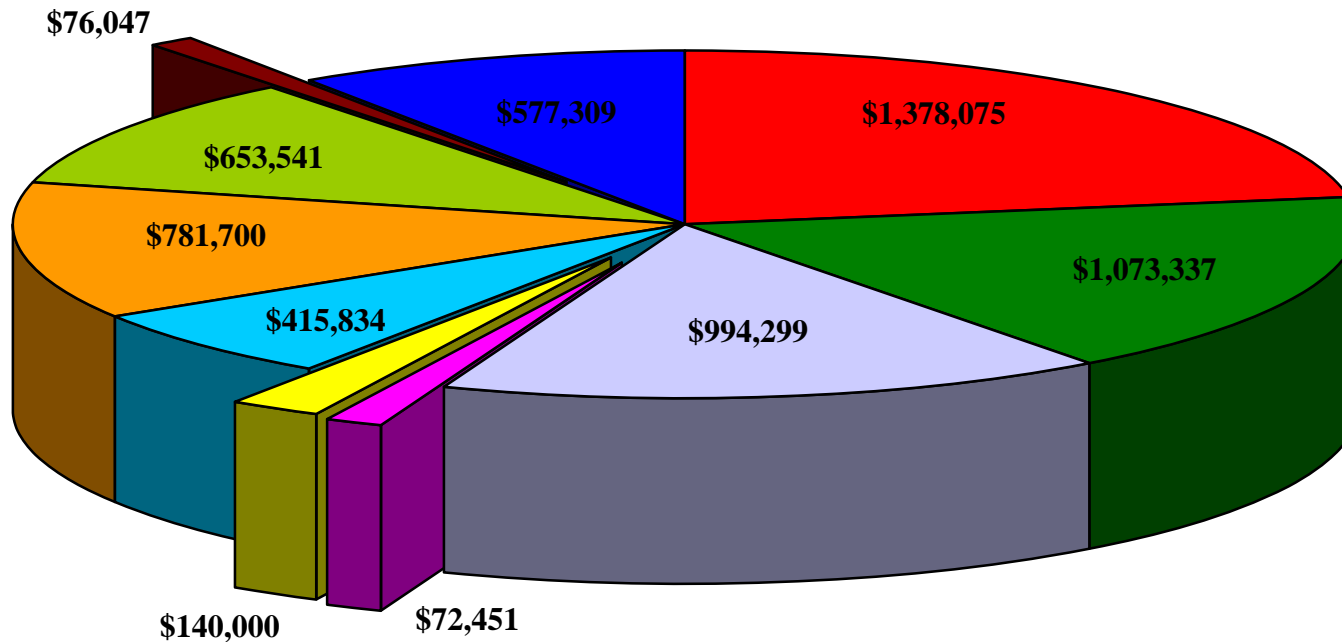
The SCA, with the County Mental Health Department, jointly funded supportive group therapy service, which operated on an open-ended "drop-in" type basis to clients diagnosed with both drug/alcohol dependence and mental illness. This service was co-facilitated by Gaudenzia West Chester Outpatient and Human Services Inc. Additionally, five (5) contracts for short-term inpatient, non-hospital treatment are in place for mentally ill substance abusers (MISA).

FISCAL INFORMATION

Total Revenue for the Chester County Department of Drug and Alcohol Services for fiscal year 2004/05 was \$6,162,593. Revenue Sources Included federal funding streams, PA Department of Public Welfare funding, PA Department of Health State Base, PA Commission on Crime & Delinquency (PCCD), Human Services Development Fund (HSDF), Chester County matching funds, and other miscellaneous sources (DUI Fines, Interest Income, Reinvestment, Children, Youth and Families Funding).

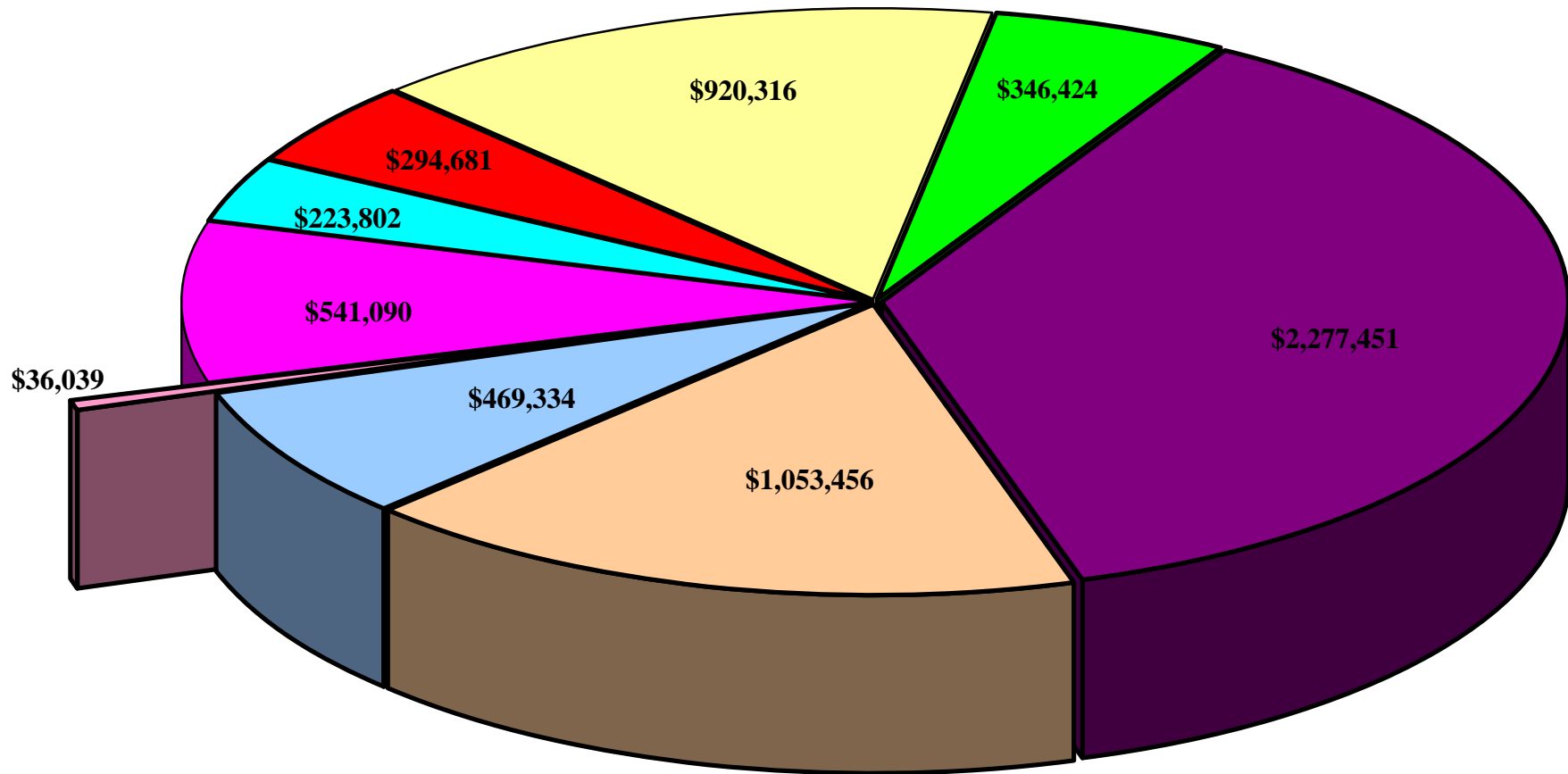
A Chart showing the breakdown of these funding sources can be found below.

Total Revenue FY 2004/05 - \$6,162,593



Total Expenditures Fiscal Year 2004/05

\$6,162,593



DEMOGRAPHIC DATA FOR CLIENTS SERVED 2004/05

Treatment Client Profile:

The typical client admitted to outpatient treatment in fiscal year 2004/05 was a Caucasian male who primarily abused or was addicted to alcohol. Fifty-two percent of these clients fell between the ages of 18-34; another Thirty-eight percent fell between the ages of 35 and 54.

The typical client admitted to partial hospitalization treatment was male African American, with the largest group falling into the 35 - 54 age range (53%). While the primary substance used by the largest percentage of partial clients was alcohol, there was a greater percent of other drug use (cocaine, crack, heroin) for partial clients (40%) than for outpatient clients (22%).

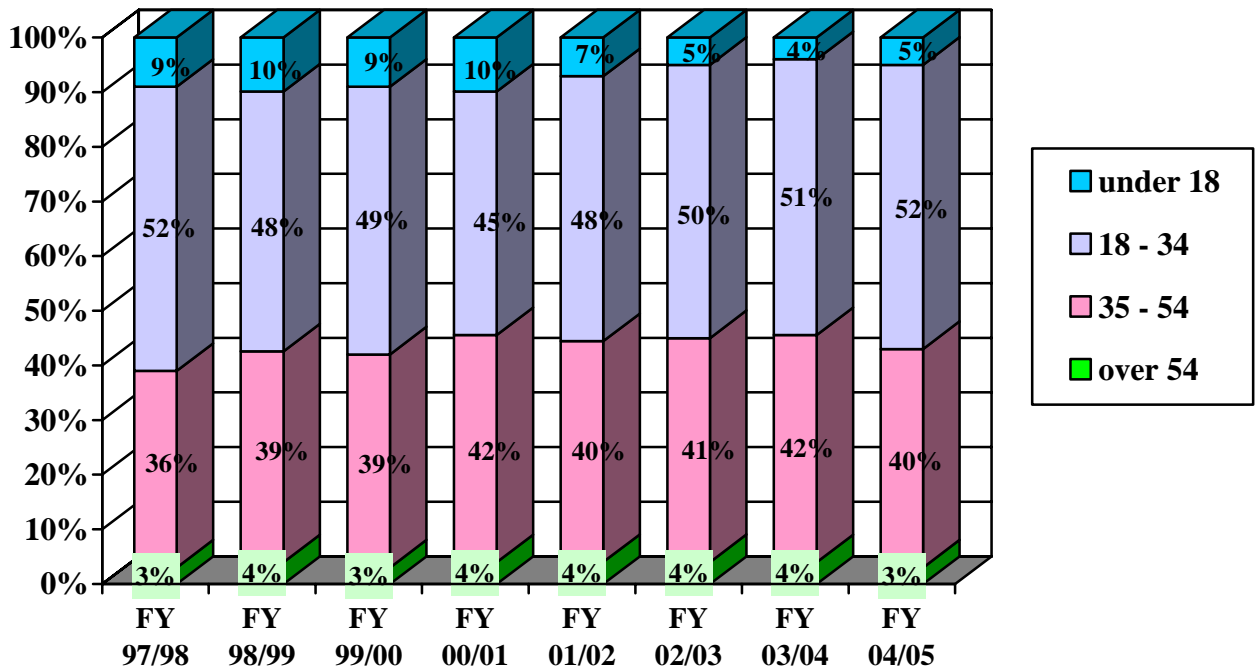
The typical client admitted to county-funded residential treatment was a male Caucasian; African Americans and Latinos as a combined percentage represented 22% of residential clients. A smaller proportion of residential clients primarily used alcohol and a higher proportion (25%) primarily abused cocaine, crack, and heroin when compared to partial. Residential clients also tended to fall more heavily into the 18 - 34 age range (54%).

Charts:

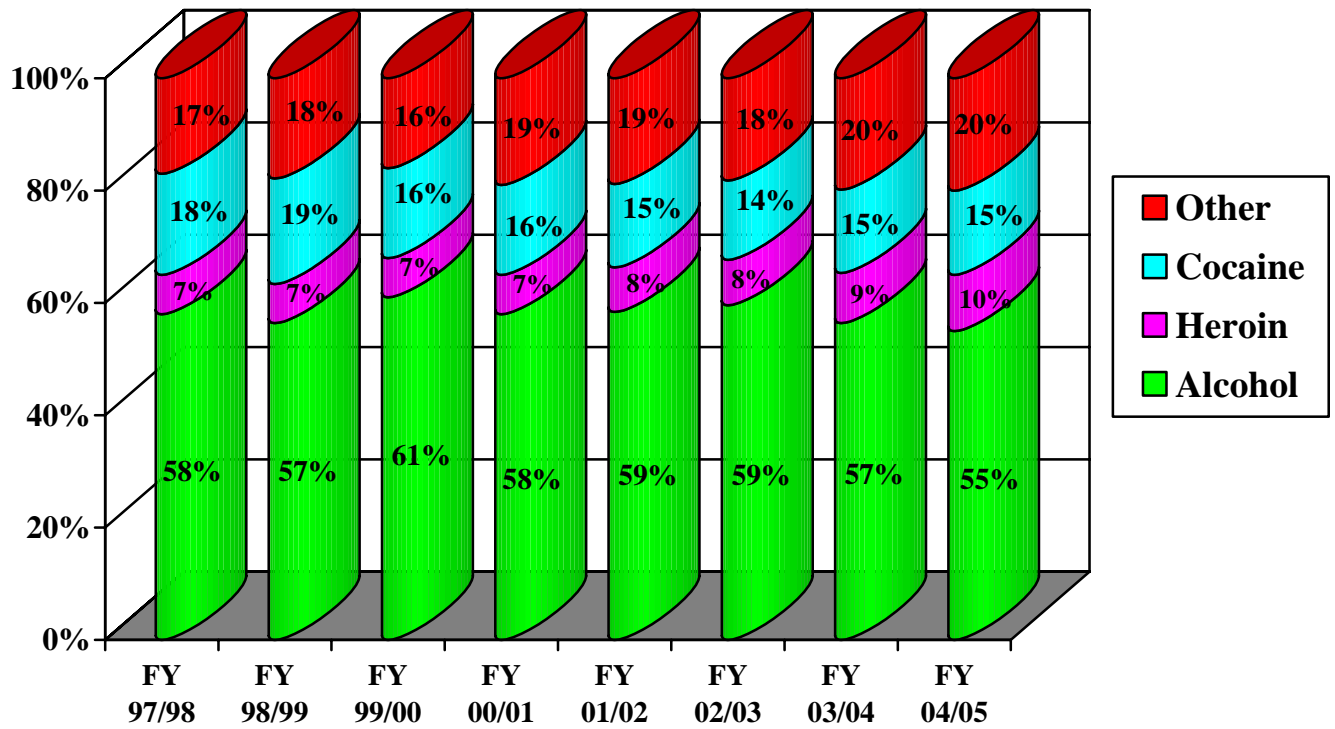
The charts on the following pages illustrate the overall demographic nature of the clients treated in county funded programs. The data includes all clients served at funded outpatient/IOP and partial hospitalization treatment providers regardless of funding source, and only clients funded at residential treatment providers (i.e. detoxification, rehab, and halfway house).

"Clients Served" includes all clients active in treatment at the beginning of the fiscal year, as well as those admitted during the subsequent twelve months to county funded facilities. The client count is unduplicated within each activity (i.e., outpatient, residential).

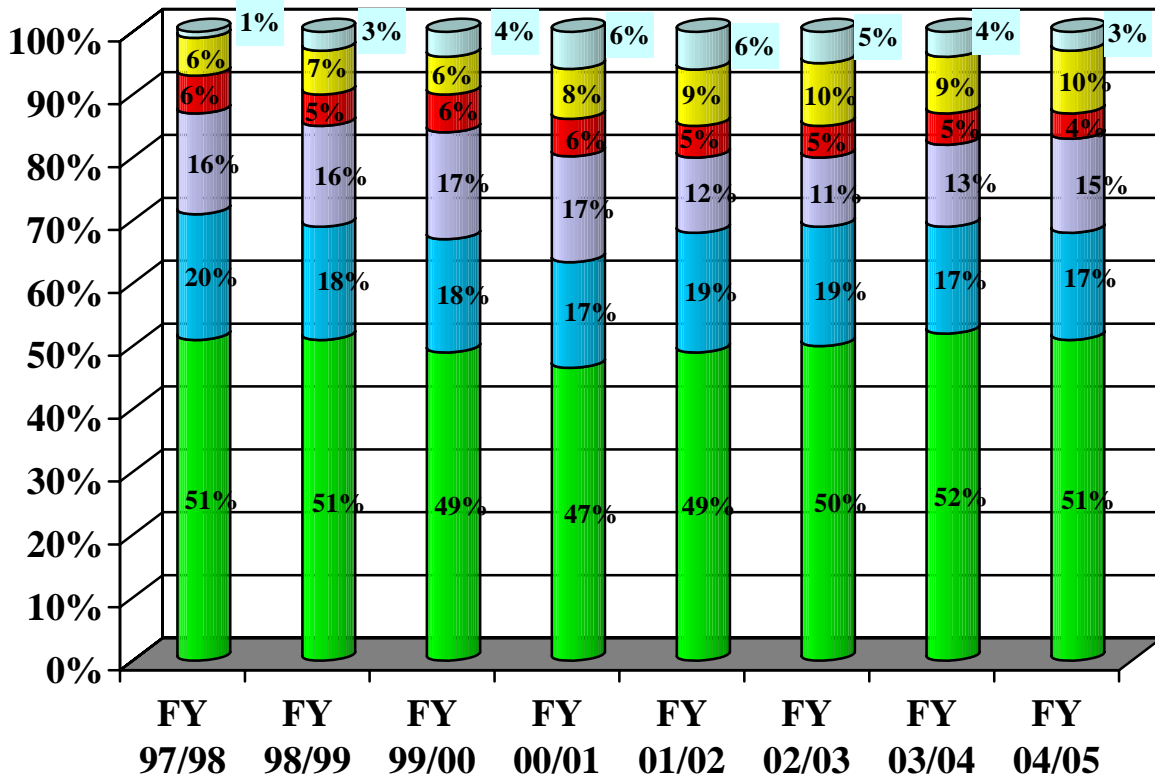
Age Over Time - Fiscal Years 97/98 -04/05



Primary Drug at Admission FY 97/98 - 04/05



Gender and Race/Ethnicity of Clients FY 97/98 - 04/05



■ White Male
 ■ White Female
 ■ Black Male
 ■ Black Female
 ■ Latino Male
 ■ Other

CHESTER COUNTY COMMISSIONERS 2005

*Carol Aichele
Andrew Dinniman
Donald Mancini*

These services are made possible by the Chester County Commissioners, Pennsylvania Department of Health, Bureau of Drug and Alcohol Programs, and the United States Department of Health and Human Services. Some data for use in this report were obtained through the county's contract with the Pennsylvania Department of Health. The Pennsylvania Department of Health specifically disclaims responsibility for any analysis, interpretations, or conclusions therein.

*Edward Rendell, Governor
Commonwealth of Pennsylvania*

*Calvin B. Johnson, Secretary
Department of Health*

Subcontracting agencies also receive contributions from local United Way chapters, foundations, and private donations.