

The background of the slide is a stylized American flag. The top half features a dark blue field with white stars, while the bottom half shows the red and white stripes of the flag. The text is overlaid on these sections.

# **Chester County School of Government**

## **Chester County Board of Commissioners**

**Terence Farrell**

**Carol Aichele**

**Kathi Cozzone**

# School of Government Dates & Agenda

---

**September 15, 2009** - County Perspective and Overview

**September 22, 2009** – Federal Stimulus Funding and Green House Gas Task Force

**September 29, 2009** - Human Services

**October 6, 2009** – Emergency Services

**October 13, 2009** – Open Space & Planning

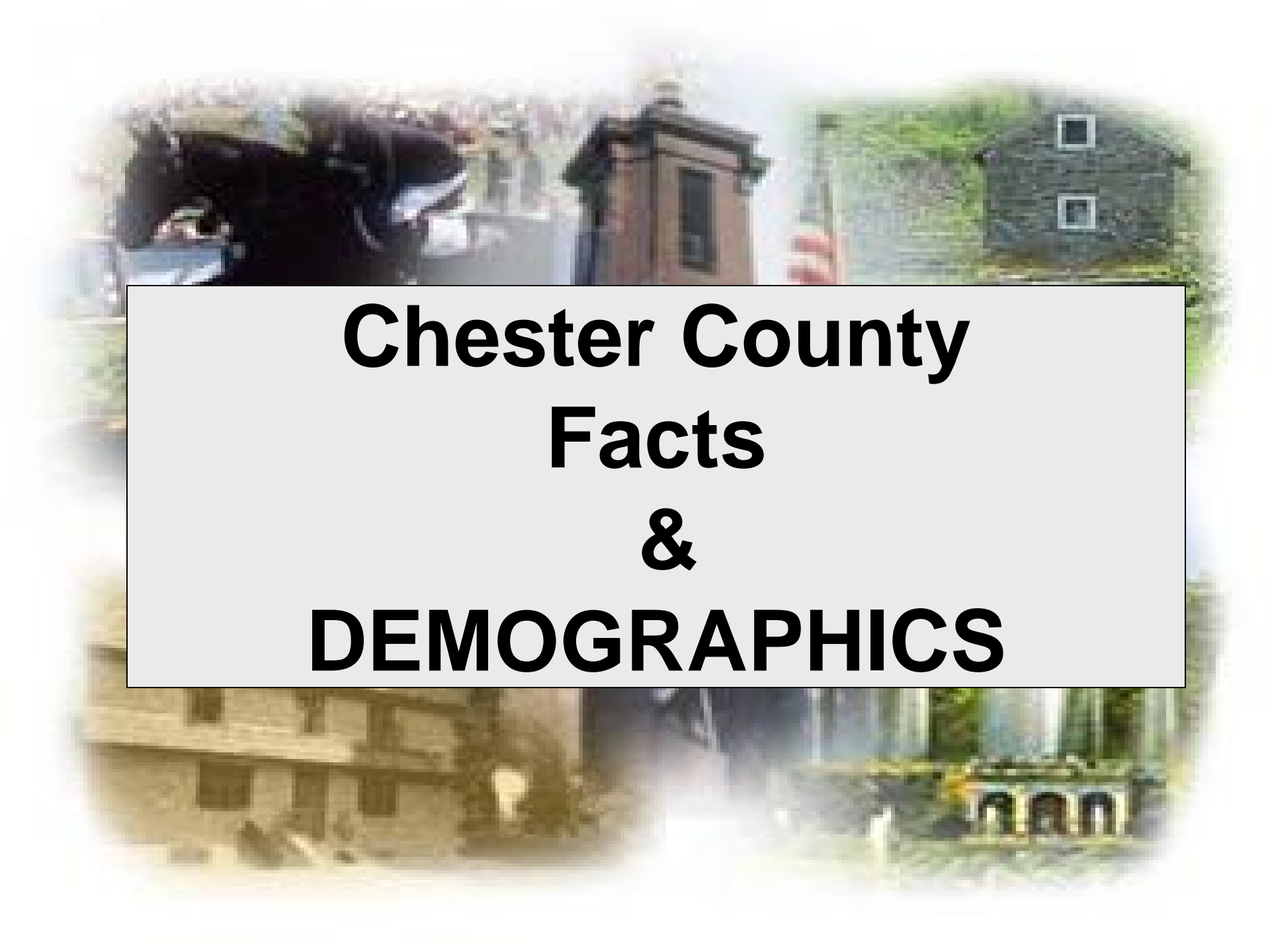
**October 20, 2009** – The Justice System

**October 27, 2009** – Voters Services

**November 10, 20079-** The Health Dept & The Library

A circular collage of four images. The top-left image shows a dark horse in profile. The top-right image shows a modern house with a dark roof and two windows. The bottom-left image shows a stone building with a large archway. The bottom-right image shows a modern building with large glass windows and a sign that says "CANTON".

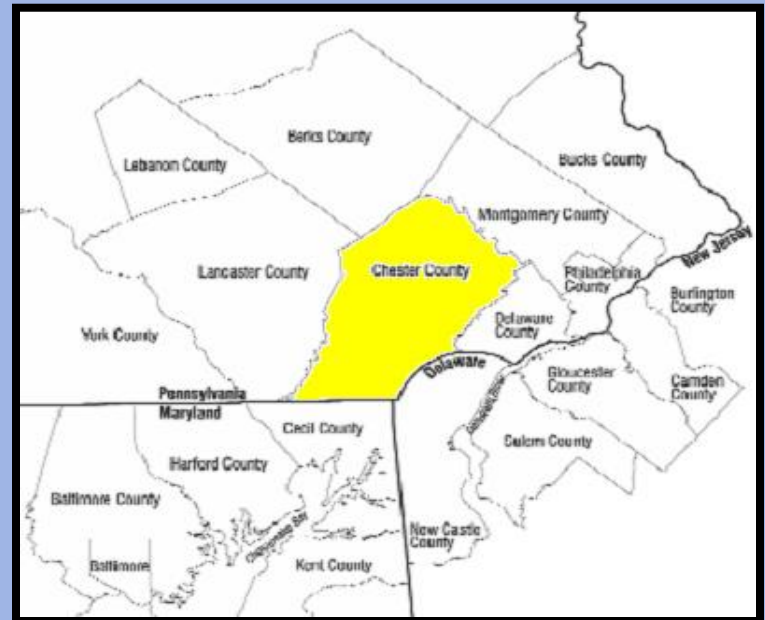
# Remarks By Chester County Commissioners



**Chester County  
Facts  
&  
DEMOGRAPHICS**

# County Facts

- Chester County covers 760 square miles of Pennsylvania
- Founded in 1682
- Chester County is one of three original PA counties
- 15 boroughs
- 57 townships
- 1 City
- 14 school districts



# Population

- 2008 Census Estimate is 491,489
- Has increased 133% since 1960
- Median age is 38.3
- Chester County growth rate is significantly higher than that of Pennsylvania and the nation.

# Population Comparison

<b>County</b>	<b>2000 Census</b>	<b>2008 Estimate</b>	<b>% Change</b>
<b>Chester</b>	<b>433,501</b>	<b>491,489</b>	<b>13.4%</b>
Berks	373,638	403,595	8.0%
Montgomery	750,097	778,048	3.7%
Lancaster	470,658	502,370	6.7%
Bucks	597,635	621,643	4.0%
Delaware	550,864	553,619	0.5%
Region	3,176,393	3,350,764	5.5%

# Education

Chester County has the second most educated population among all Pennsylvania counties (2007 American Community Survey).



---

## Higher Education Facility Enrollment

West Chester University	13,621
Immaculata University	3,879
Delaware County Community College	2,813
Lincoln University	2,524
Cheyney University	1,488
Penn State Great Valley	1,216

# Income

Chester County continues to exceed Pennsylvania and the United States in Median Family and Per Capita Income.

	<b>Per Capita Income</b>	<b>Median Family Income</b>	<b>Families below poverty level</b>
<b>Chester County</b>	\$41,035	\$101,896	3.1%
<b>PA</b>	\$26,228	\$60,825	8.1%
<b>US</b>	\$26,688	\$61,173	9.5%

# Agriculture

- Highest value of agricultural crops in Pennsylvania
- 1,915 Farms in Chester County (2007 Census of Agriculture)
- Cultivated mushroom industry world leader
- 8 award winning wineries



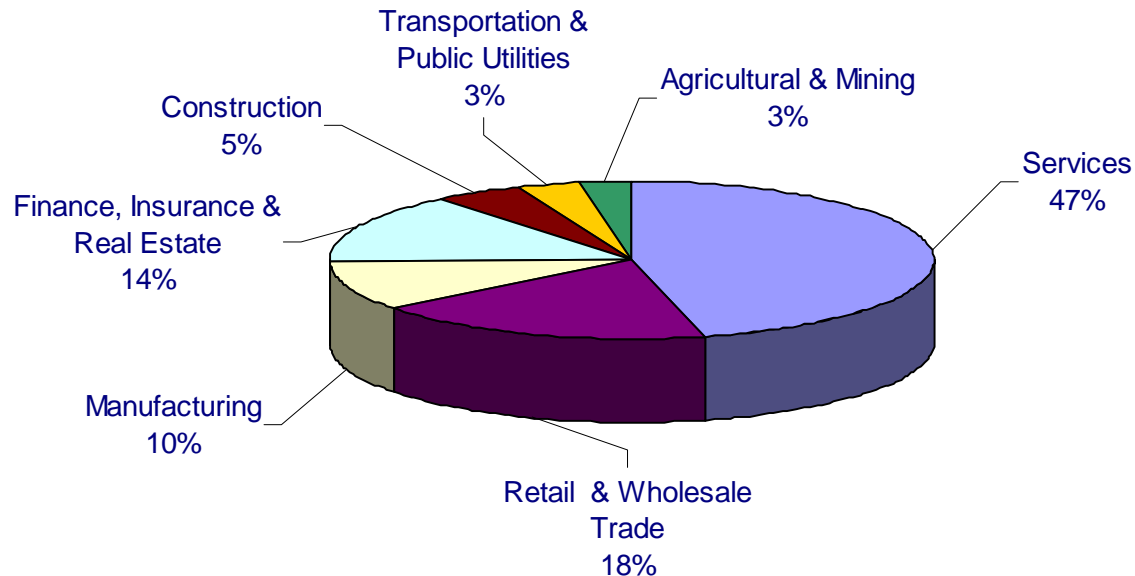
# Tourism

- Estimated \$771,300,000 spent by travelers in Chester County in 2006
- Travel expenditures in Chester County generated 17,442 jobs with a payroll of \$527,727,762 in 2006



# Job Diversification

Chester County has a diverse and expanding economy of approximately 16,898 business establishments providing more than 221,525 jobs.



The background of the slide is a collage of four images. The top-left image shows a dark horse in profile. The top-right image shows a modern house with a dark roof and two windows. The bottom-left image shows a classical building with a prominent column. The bottom-right image shows a modern building with a glass facade and a sign that says "ALAN".

**Organizational Structure**  
**Financial Structure**  
**Budget**

# **Pennsylvania County Government**

---

## **Pennsylvania Constitution**

Basis for county government is stated in Section 4 of the Local Government article, Article IX.

## **The County Code**

Adopted by the State Legislature and signed into law in 1955. Amended in 2000 and 2002 it outlines some of the tasks and responsibilities of Counties.

*Citizens of Chester County*

State Court Administrator

Elected President Judge

Commissioners

Elected Officials (Row Offices)

Elected Judges

Chief Administrative Officer  
Chief Management Officer/Chief Clerk

Authorities, Boards & Commissions

- Aging Advisory Council
- Agricultural Development Council
- Agricultural Land Preservation Board
- Airport Authority
- Board of Assessment
- Chester County General Authority
- Citizens' Advisory Committee to Children & Youth
- Conference and Visitors Bureau
- Conservation District
- Drug & Alcohol Committee
- Board of Health
- Health & Education Facilities Authority
- Housing Authority
- Industrial Development Authority
- Library Board
- Mental Health/Mental Retardation Board
- Parks & Recreation Board
- Planning Commission
- Private Industry Council
- Redevelopment Authority
- Solid Waste Authority
- Water Resources Authority
- Women's Commission
- Workforce Investment Board

Appointed Court Related

- Adult Probation
- Bail Agency
- Court of Common Pleas
- Court Reporters
- District Justices
- Domestic Relations
- Juvenile Probation
- Law Library

Appointed Department Heads

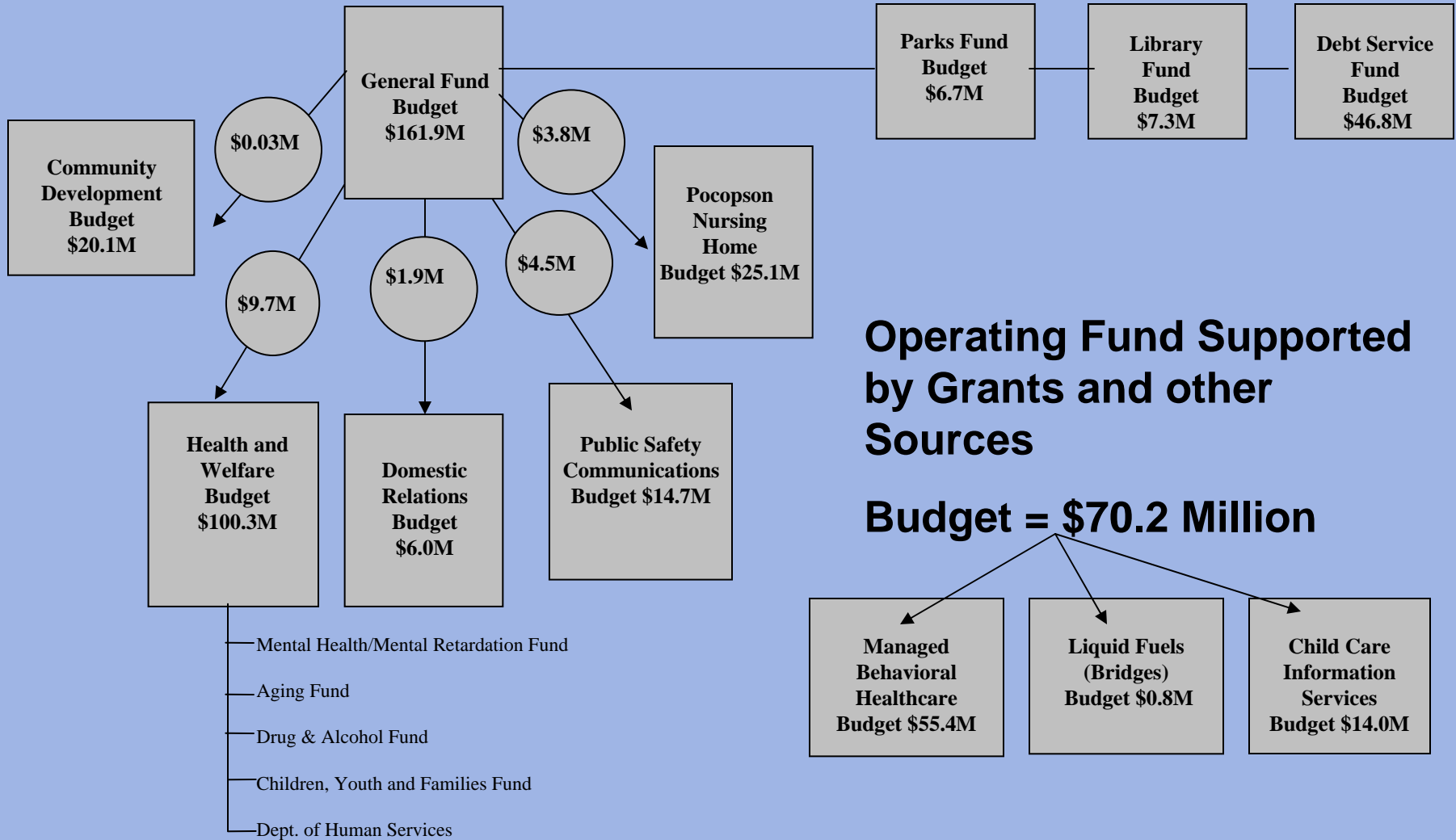
- Aging Service
- Archives & Records
- Assessment
- Child Care Information Services
- Children, Youth & Families
- Commissioners' Office
- Community Development
- Computing & Information Services
- Drug & Alcohol
- Emergency Services
- Facilities Management
- Finance
- Human Resources
- Human Services
- Library
- Liquid Fuels
- Managed Behavioral Healthcare
- Mental Health/Mental Retardation
- Open Space Preservation
- Parks & Recreation
- Planning Commission
- Pocopson Home
- Prison/Correction Center
- Procurement & General Services
- Public Defender
- Public Health
- Public Information
- Soil Conservation
- Solicitor
- Tax Claim
- Veterans' Affairs
- Voter Services
- Water Resources Authority
- Youth Center

- Clerk of Courts
- Controller
- Coroner
- District Attorney
- Jury Commissioners
- Prothonotary
- Recorder of Deeds
- Register of Wills/Clerk of the Orphans' Court
- Sheriff
- Treasurer

**Chester County Government  
Organization Chart**

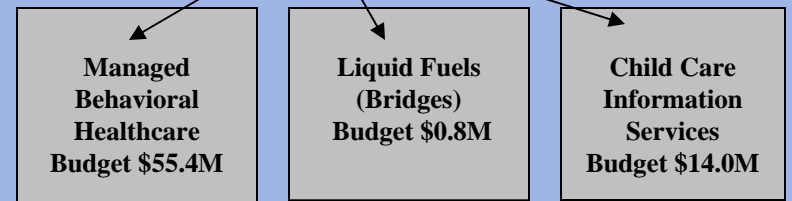
# Operating Funds Supported by Taxes, Grants, and Other Sources

## Budgets = \$389.0 million



## Operating Fund Supported by Grants and other Sources

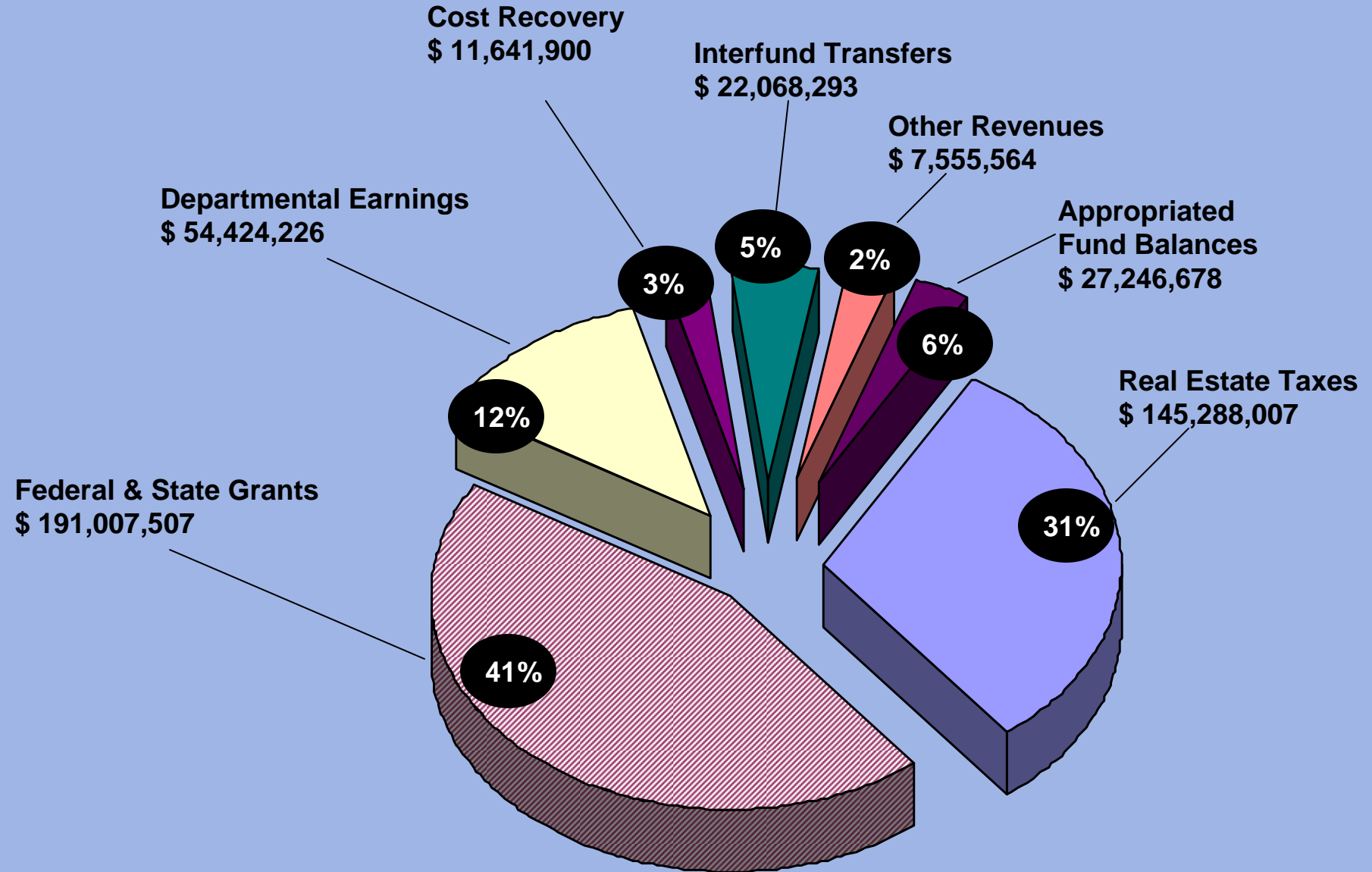
**Budget = \$70.2 Million**



**TOTAL = \$459.2 Million**

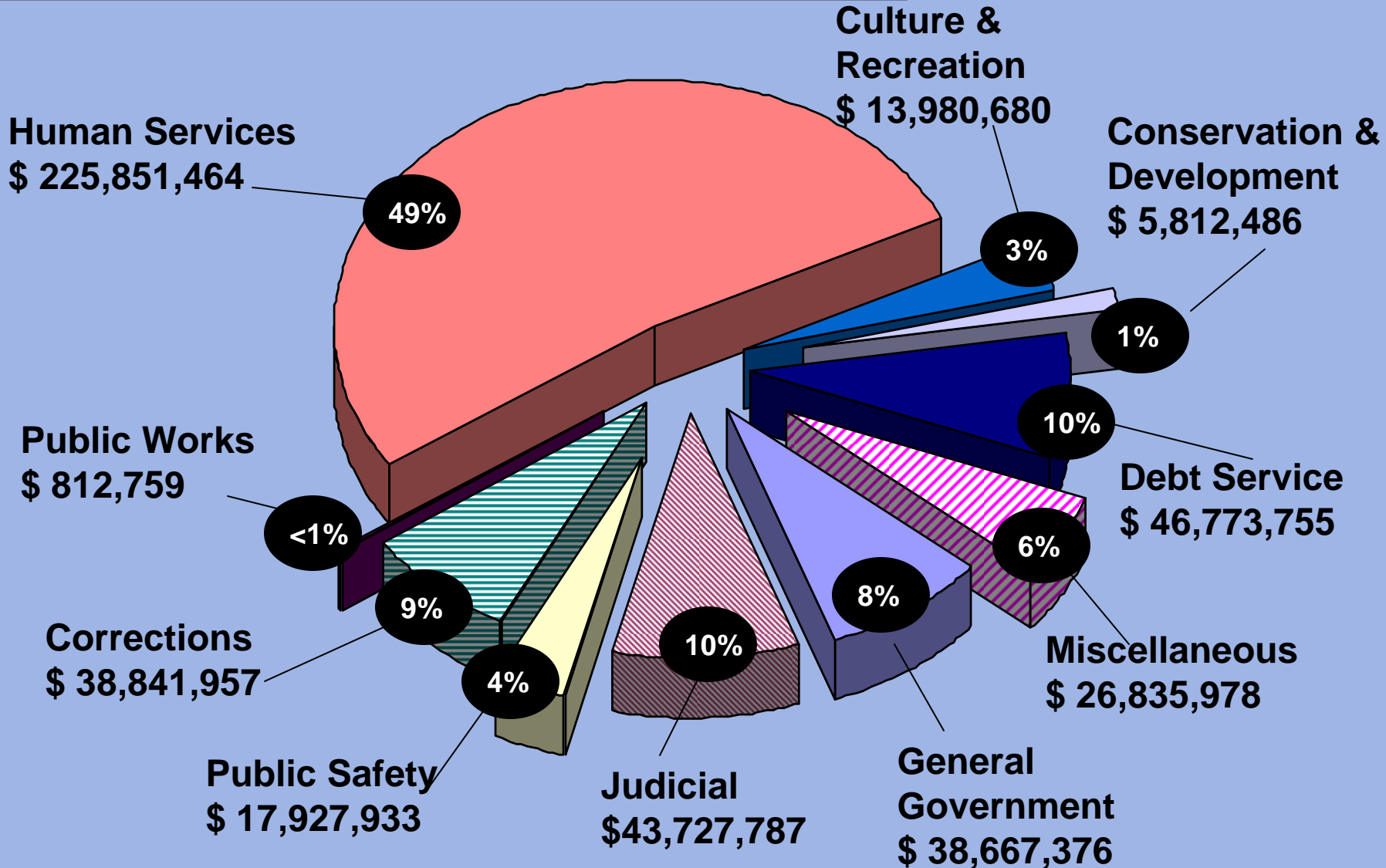
# 2009 Revenues by Source

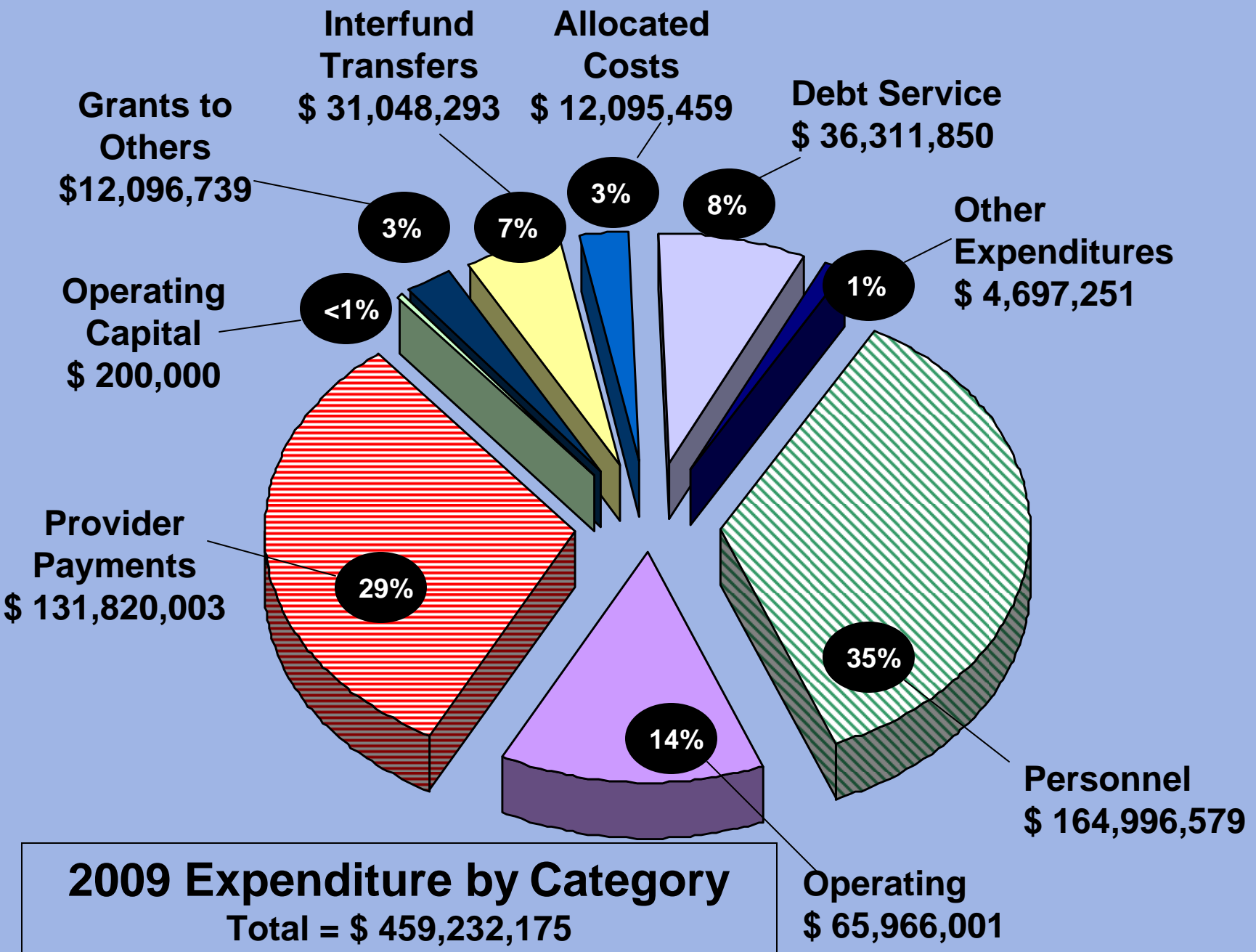
Total = \$ 459,232,175



# 2009 EXPENDITURES BY FUNCTION

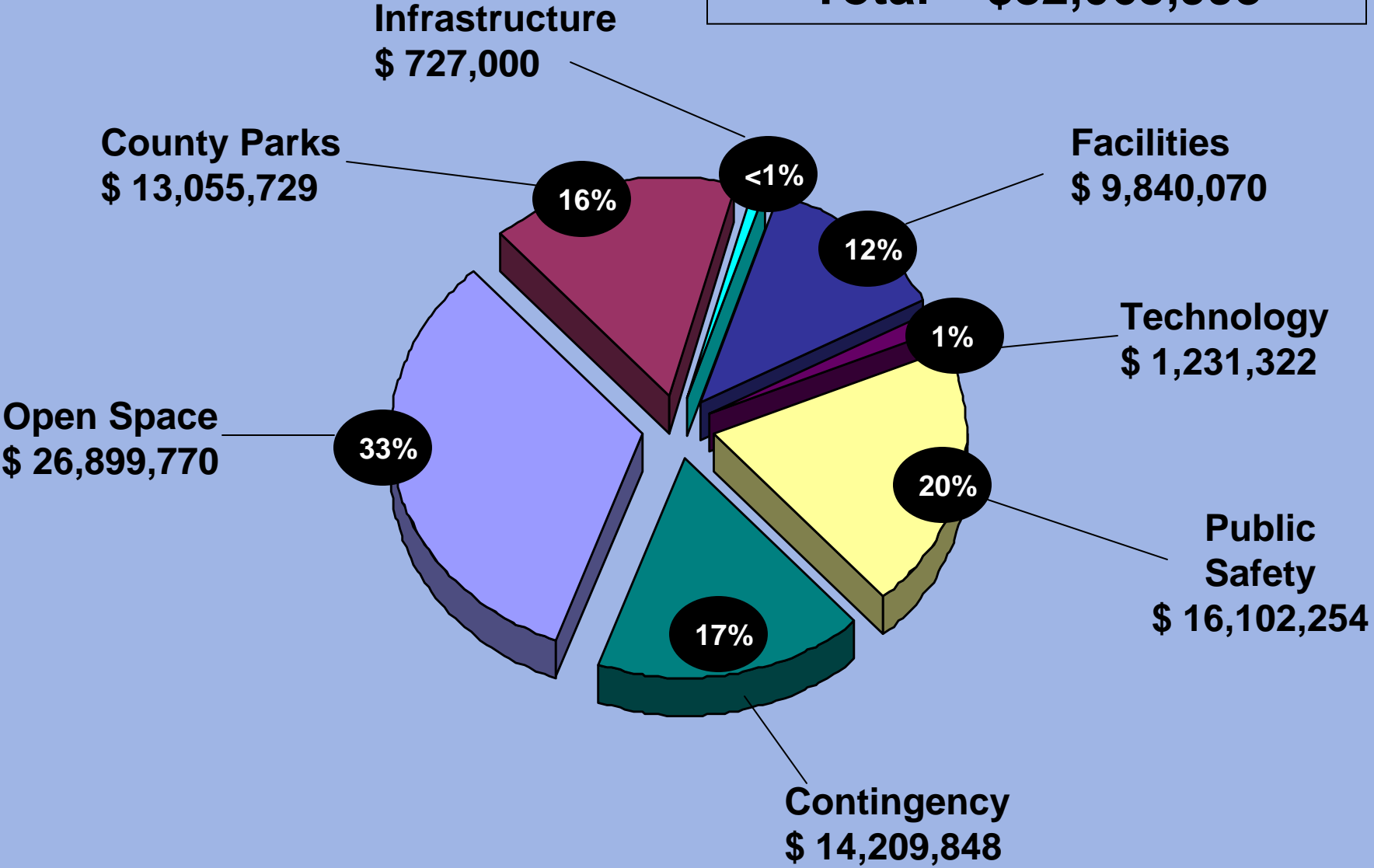
Total = \$ 459,232,175





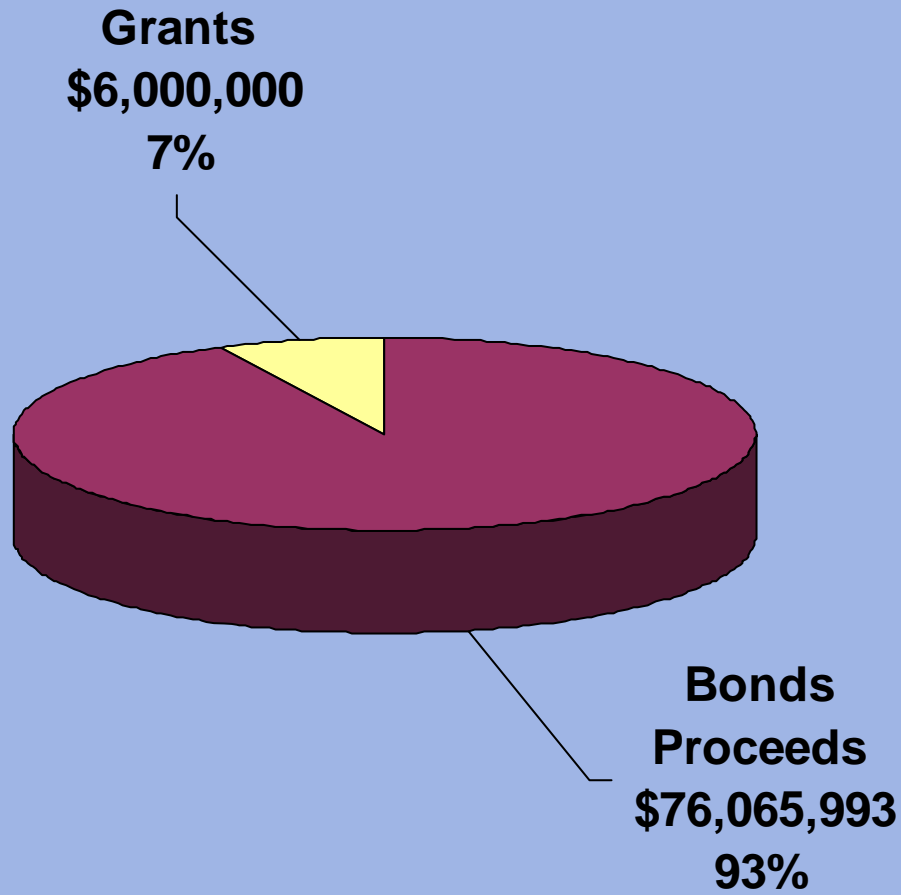
# 2009 Capital Expenditures

Total = \$82,065,993



# 2009 Capital Funding Sources

Total = \$82,065,993



# Moody's Aaa Status

---

In 2008, Moody's Investors Service once again reaffirmed the county's Aaa bond rating.

This is the highest possible rating on the Moody's scale. In confirming this rating, Moody's cited the county's strong financial management, a diverse and expanding tax base, and a strong socioeconomic profile.

Only one other county in Pennsylvania and a total of 49 counties nation-wide have achieved this outstanding rating.



**Major Services  
&  
Programs**

# Services and Programs of County Government

---

- **Open Space Preservation**
  - 45,532 Acres Preserved
- **Courts**
  - 5,900 Criminal Dispositions
  - 1,473 Civil Disposition
  - 7,157 Family Court Cases Processed
- **Emergency Services**
  - 298,326 Calls
- **Libraries**
  - 1.9 Million Visits
- **Mental Health/Mental Retardation Services**
  - 3,400 MH Individuals Served
  - 1,410 MR Individuals Served

# Services and Programs of County Government

---

- **Children, Youth and Families**
  - 990 Children served by In-home services
- **Aging Services**
  - 130,000 hours of personal care delivered
- **Health Department**
  - 2,550 Health Screening Tests
  - Issued 2,530 food establishment licenses
  - 4,700 average monthly WIC program enrollment
- **Pocopson Home**
  - Manage and operate 275 nursing home facility
- **Parks**
  - 27,220 special events visitors